

13.52 AC
HARD CORNER
LOOP 1604 & HWY 16
SOUTH BEXAR COUNTY



GREAT INVESTMENT POTENTIAL

HARD CORNER BETWEEN TOYOTA AND THE EAGLEFORD SHALE PLAY IN SOUTH TEXAS. IT IS LOCATED AT THE INTERSECTION OF LOOP 1604 AND HWY 16 IN SOUTHERN BEXAR COUNTY. CITY WATER AND ELECTRICITY RUN ALONG THE BOUNDARY. A NEW JUNIOR HIGH SCHOOL IS UNDER CONSTRUCTION JUST 1/2 MILE WEST OF THIS INTERSECTION, AND IS SCHEDULED TO BE COMPLETED FOR THE 2012/2013 SCHOOL YEAR. THE SCHOOL WILL ENROLL APPROXIMATELY 650 STUDENTS . ONE CONVENIENCE STORE AND ONE FAST FOOD RESTAURANT ARE LOCATED AT THIS INTERSECTION.

FOR INFO CONTACT :

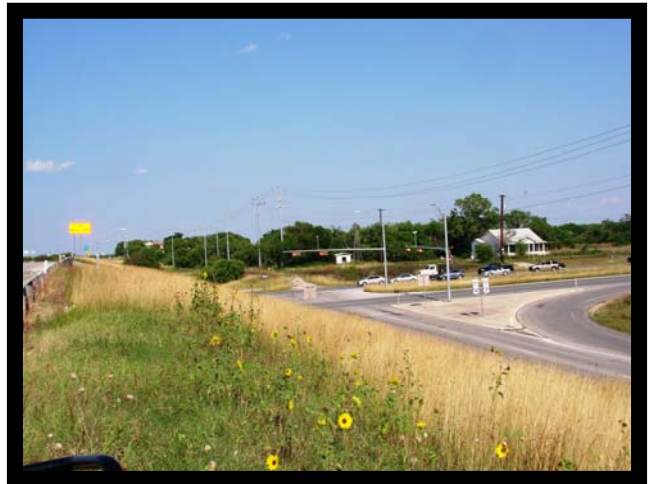
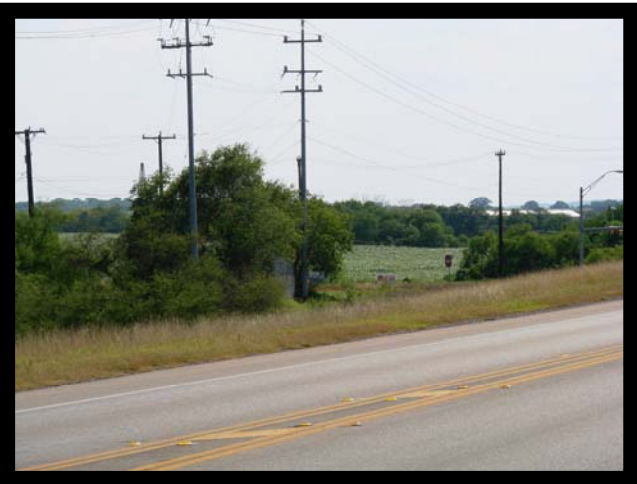
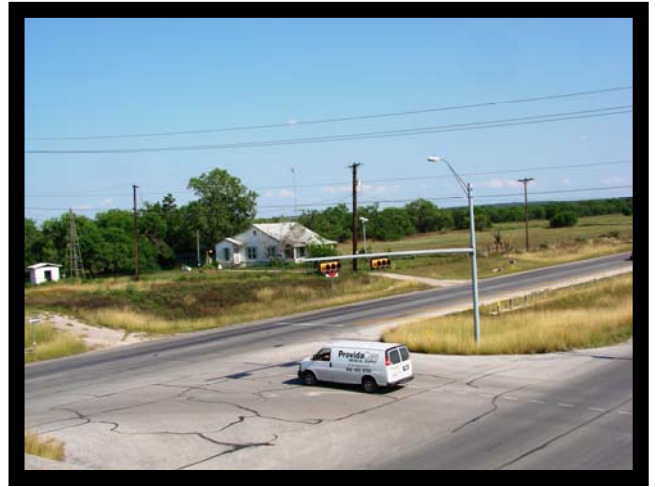
RICK SLAUGHTER AT (210) 389-4954

EMAIL : RSLAUGHTER59@YAHOO.COM

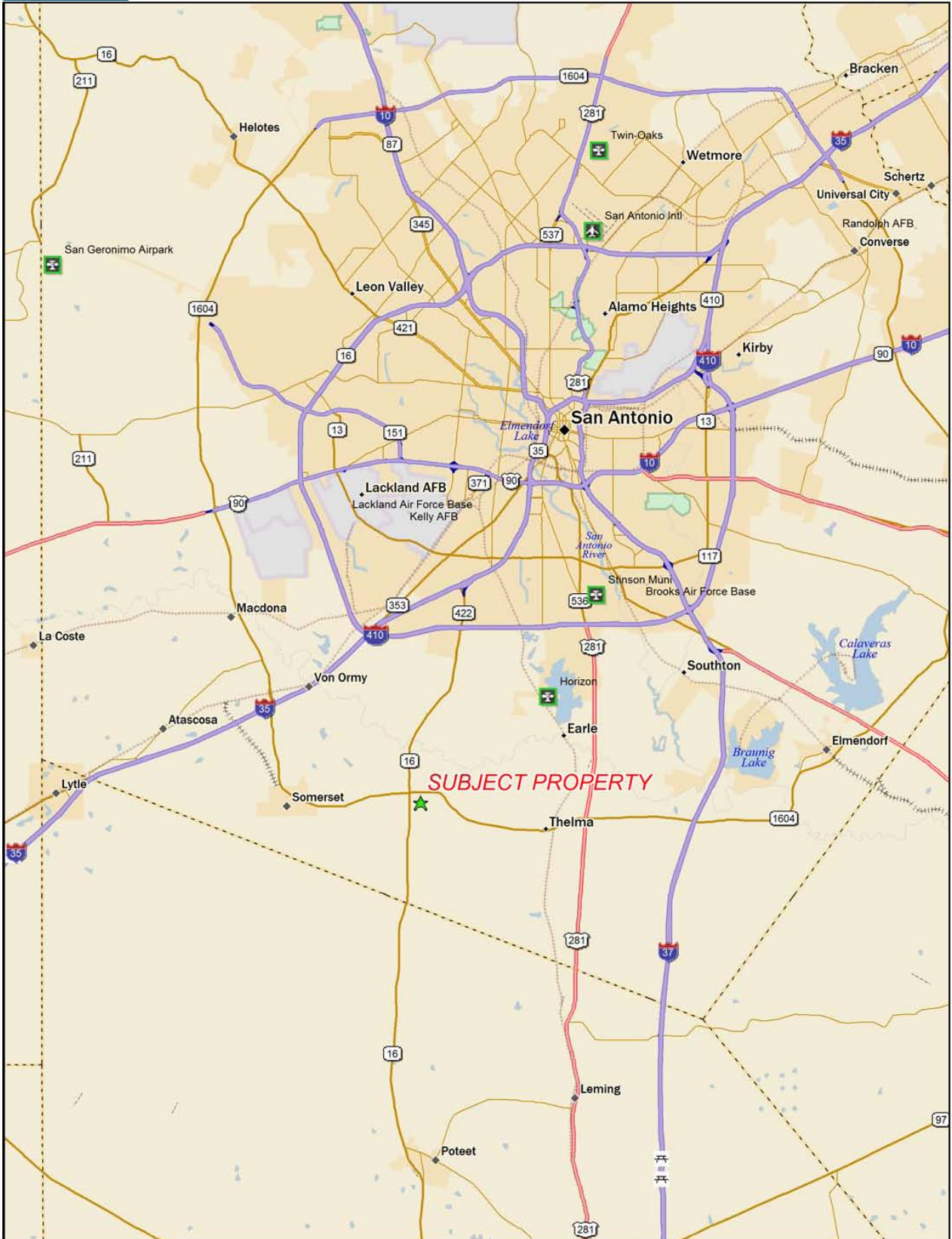
BROKER : R. ANTHONY SIMPSON (210) 854-6365

THE INFORMATION PRESENTED WAS OBTAINED FROM SOURCES DEEMED RELIABLE, HOWEVER, THE BROKER ASSUMES NO RESPONSIBILITY FOR THE ACCURACY THEREOF. THE PROPERTY OFFERED FOR SALE IS SUBJECT TO CHANGES, PRIOR SALE, WITHDRAWAL AND FACTS ASCERTAINED BY THE OWNER(S).

13.52 ACRES
SOUTH BEXAR CO.



PRICE : \$ 707,762.00 OR \$1.20 PER S.F.

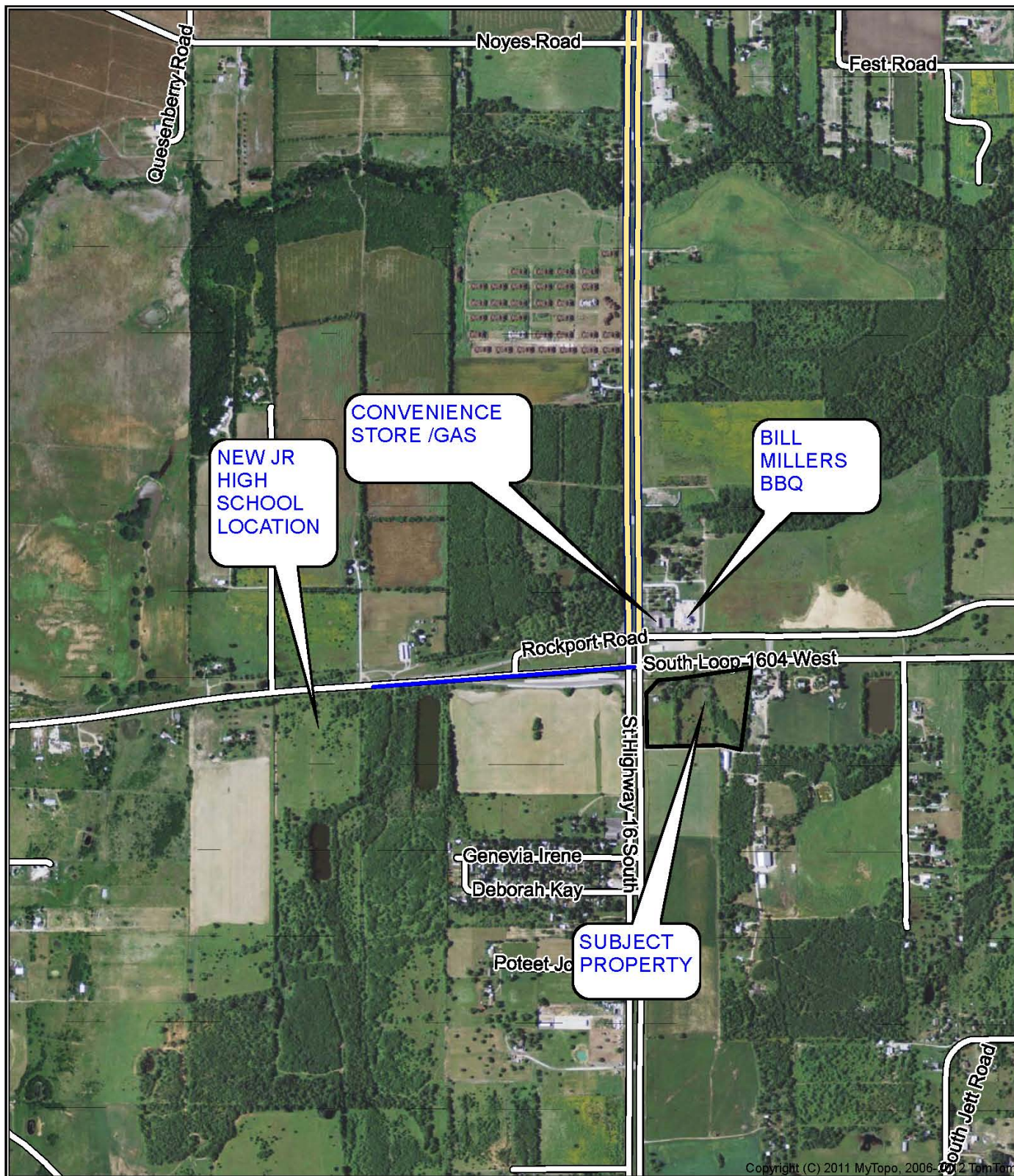


Data use subject to license.

© 2007 DeLorme, Street Atlas USA® 2008.

www.delorme.com





SCALE 1:14000

0 1000 2000 3000
FEET