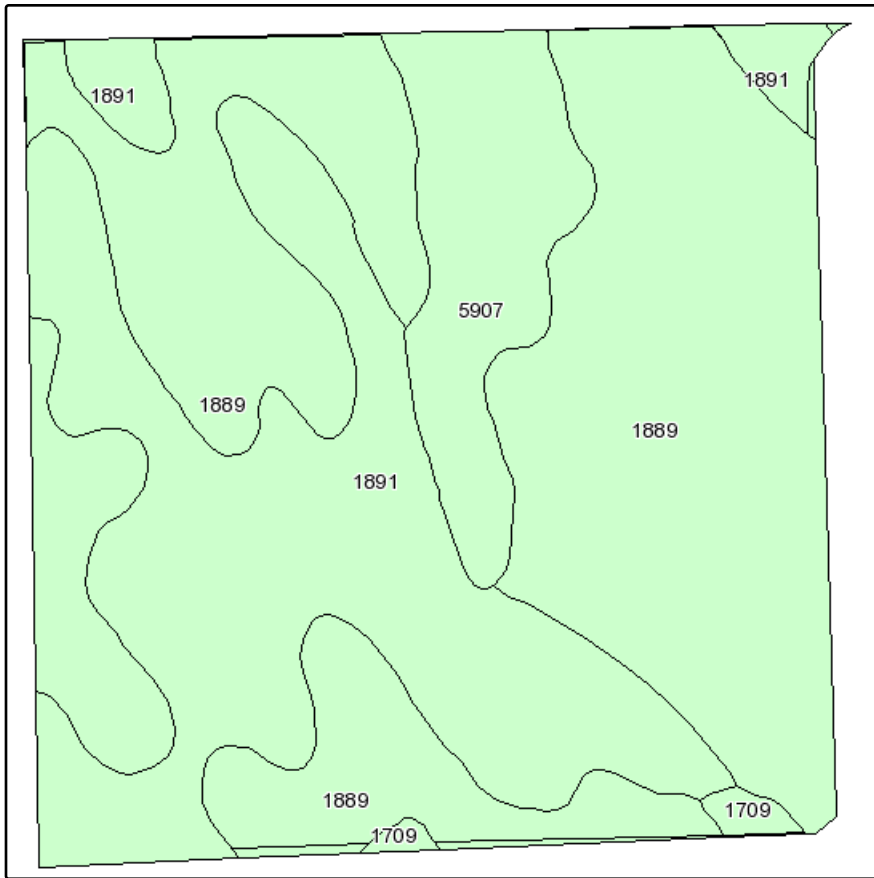
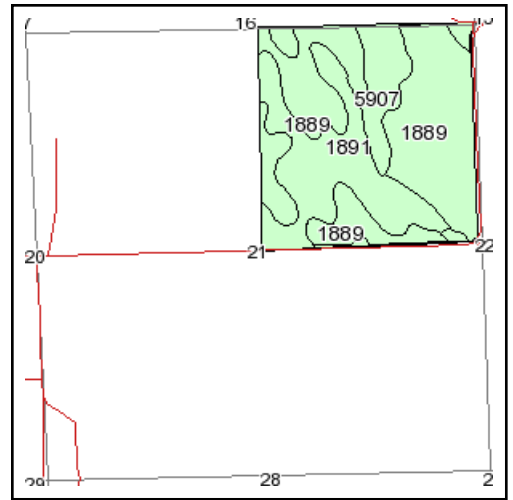


Soils Map



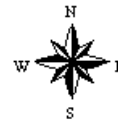
Fsa borders provided by the Farm Service Agency as of May 23, 2008.
Soils data provided by USDA and NRCS.



State: **Nebraska**
County: **Morrill**
Location: **021-020N-049W**
Township: **North Camp Clarke**
Acres: **305.1**
Date: **3/28/2012**



KRAUPIE'S
REAL ESTATE & AUCTIONEERS
917 Main St. PO Box 100 Bridgeport, NE 69336
308-262-1150 www.farmauction.net



Maps provided by:



©AgriData, Inc 2008
www.AgriDataInc.com

Code	Soil Description	Acres	Percent of field	Non-Irr Class	Irr Class	SRPG	Alfalfa hay Irrigated	Corn Irrigated	Dry beans Irrigated	Sugar beets Irrigated	Winter wheat
1889	Valent fine sand, rolling	172	56.4%	Vle		12					
1891	Valent loamy fine sand, 0 to 3 percent slopes	100.4	32.9%	Vle	IVe	21	3.7	105	27	17	
5907	Alice-Dix complex, 6 to 20 percent slopes	30.5	10.0%	Vls		32					
1709	Otero very fine sandy loam, 0 to 3 percent slopes	2.2	0.7%	IIle	Ile	43	5	130	36	23	36
Weighted Average						17.2	1.3	35.5	9.1	5.8	0.3