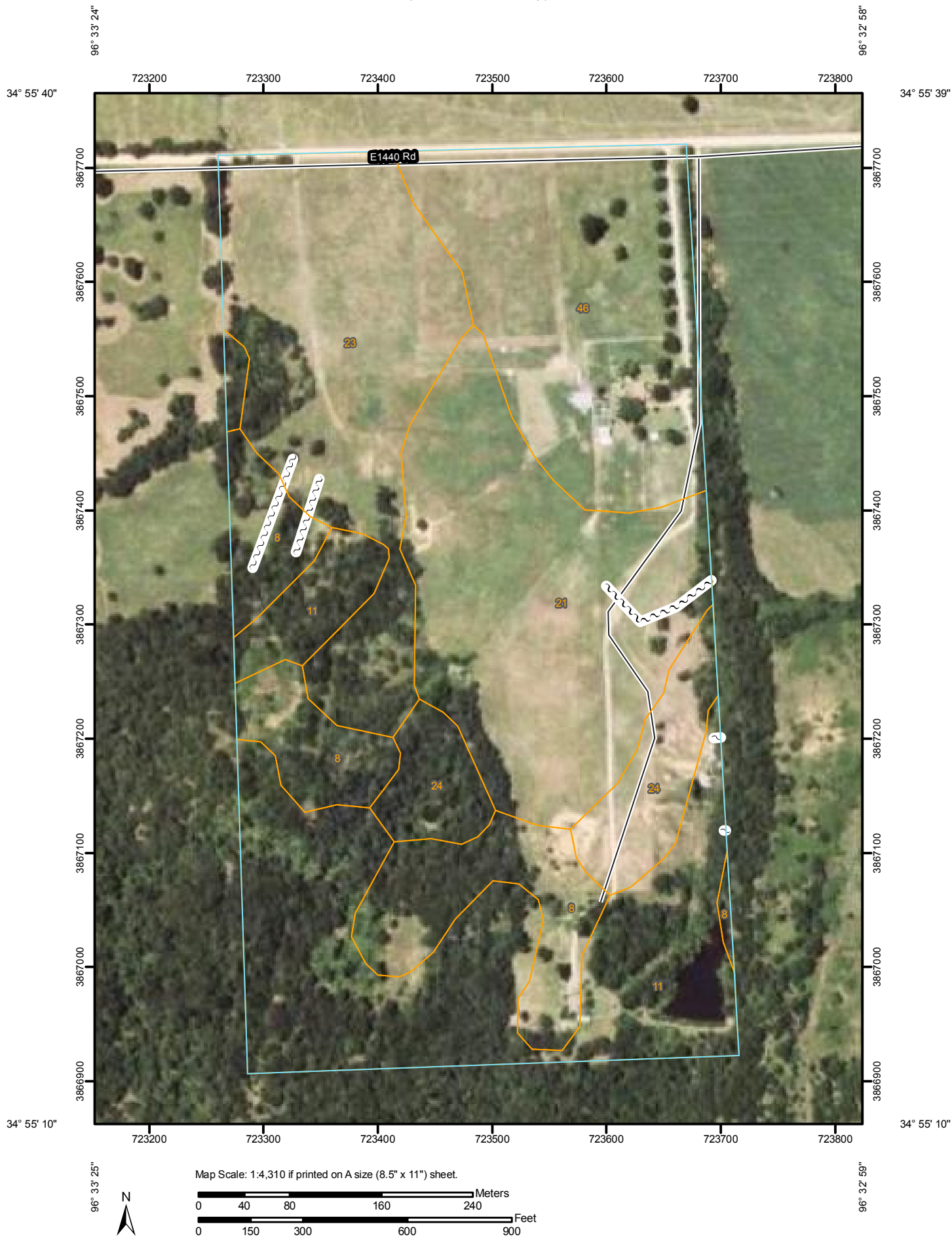


Soil Map—Seminole County, Oklahoma  
(Sasakwa 83 soil map)



Soil Map—Seminole County, Oklahoma  
(Sasakwa 83 soil map)

## MAP LEGEND

### Area of Interest (AOI)

 Area of Interest (AOI)

### Soils

 Soil Map Units

### Special Point Features

-  Blowout
-  Borrow Pit
-  Clay Spot
-  Closed Depression
-  Gravel Pit
-  Gravelly Spot
-  Landfill
-  Lava Flow
-  Marsh or swamp
-  Mine or Quarry
-  Miscellaneous Water
-  Perennial Water
-  Rock Outcrop
-  Saline Spot
-  Sandy Spot
-  Severely Eroded Spot
-  Sinkhole
-  Slide or Slip
-  Sodic Spot
-  Spoil Area
-  Stony Spot



Very Stony Spot



Wet Spot



Other

### Special Line Features



Gully



Short Steep Slope



Other

### Political Features



Cities

### Water Features



Oceans



Streams and Canals

### Transportation



Rails



Interstate Highways



US Routes



Major Roads



Local Roads

## MAP INFORMATION

Map Scale: 1:4,310 if printed on A size (8.5" × 11") sheet.

The soil surveys that comprise your AOI were mapped at 1:24,000.

Please rely on the bar scale on each map sheet for accurate map measurements.

Source of Map: Natural Resources Conservation Service  
Web Soil Survey URL: <http://websoilsurvey.nrcs.usda.gov>  
Coordinate System: UTM Zone 14N NAD83

This product is generated from the USDA-NRCS certified data as of the version date(s) listed below.

Soil Survey Area: Seminole County, Oklahoma  
Survey Area Data: Version 6, Sep 16, 2008

Date(s) aerial images were photographed: 6/28/2003

The orthophoto or other base map on which the soil lines were compiled and digitized probably differs from the background imagery displayed on these maps. As a result, some minor shifting of map unit boundaries may be evident.



## Map Unit Legend

Seminole County, Oklahoma (OK133)			
Map Unit Symbol	Map Unit Name	Acres in AOI	Percent of AOI
8	Dougherty loamy fine sand, 3 to 8 percent slopes	10.2	12.3%
11	Eufaula-Dougherty complex, 5 to 15 percent slopes	19.6	23.5%
21	Konawa fine sandy loam, 1 to 3 percent slopes	17.3	20.7%
23	Konawa fine sandy loam, 3 to 5 percent slopes, eroded	15.8	19.0%
24	Konawa fine sandy loam, 3 to 8 percent slopes, gullied	5.4	6.5%
46	Teller loam, 1 to 3 percent slopes	14.9	17.9%
<b>Totals for Area of Interest</b>		<b>83.2</b>	<b>100.0%</b>