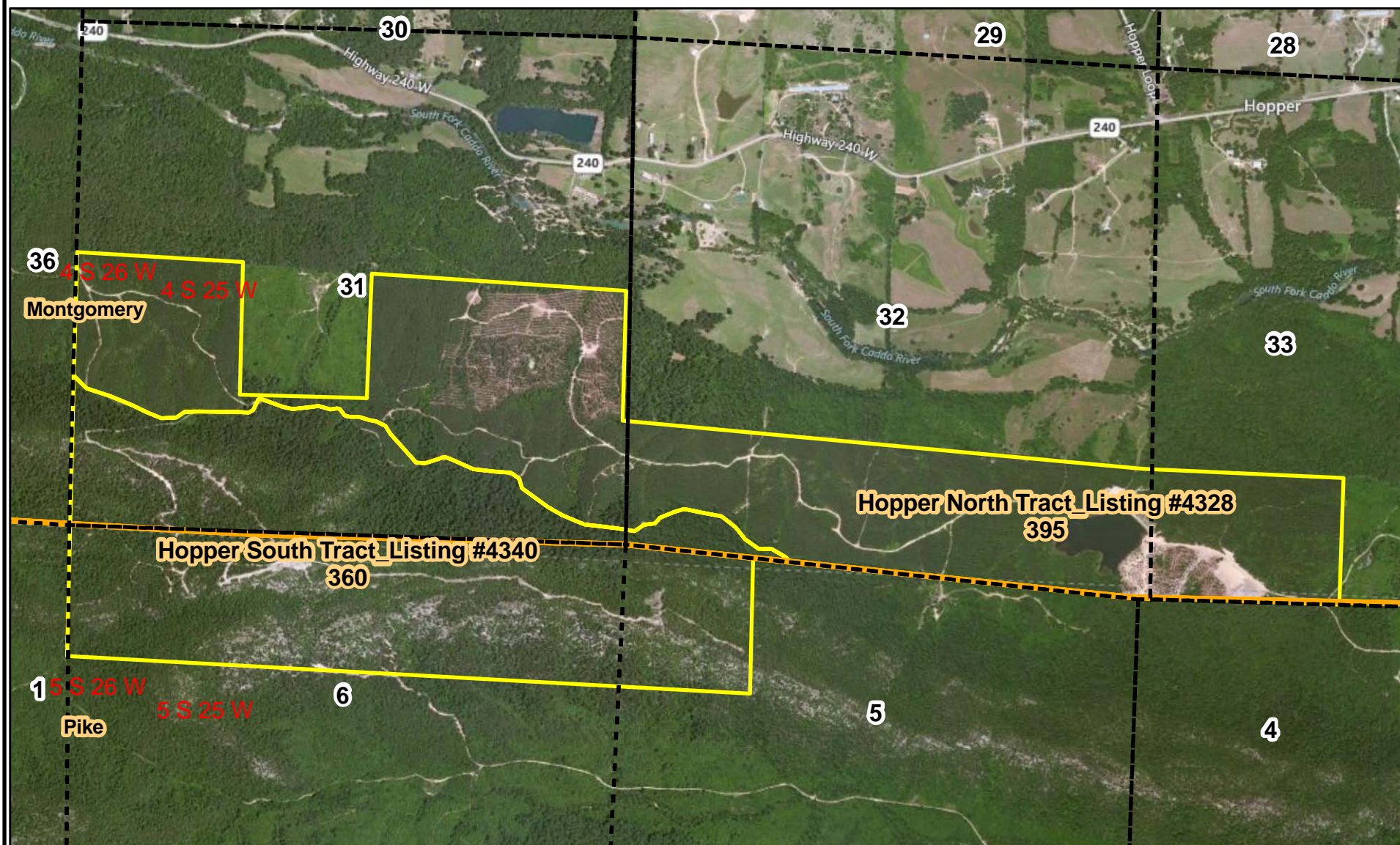


"Hopper North Tract" Listing #4328  
Pt. Sec. 31, 32, 33, T4S, R25W  
Montgomery County, Arkansas  
Containing 395 acres, more or less

## NOTICE OF LAND SALES

"Hopper South Tract" Listing #4340  
Pt. Sec. 31, 32, T4S, R25W; Pt. Sec. 5 & 6, T5S, R25W  
Montgomery & Pike Counties, Arkansas  
Containing 360 acres, more or less



0 0.125 0.25 0.5  
Miles



Created: April, 2012  
Flown: 2011  
Drawn By: JDT