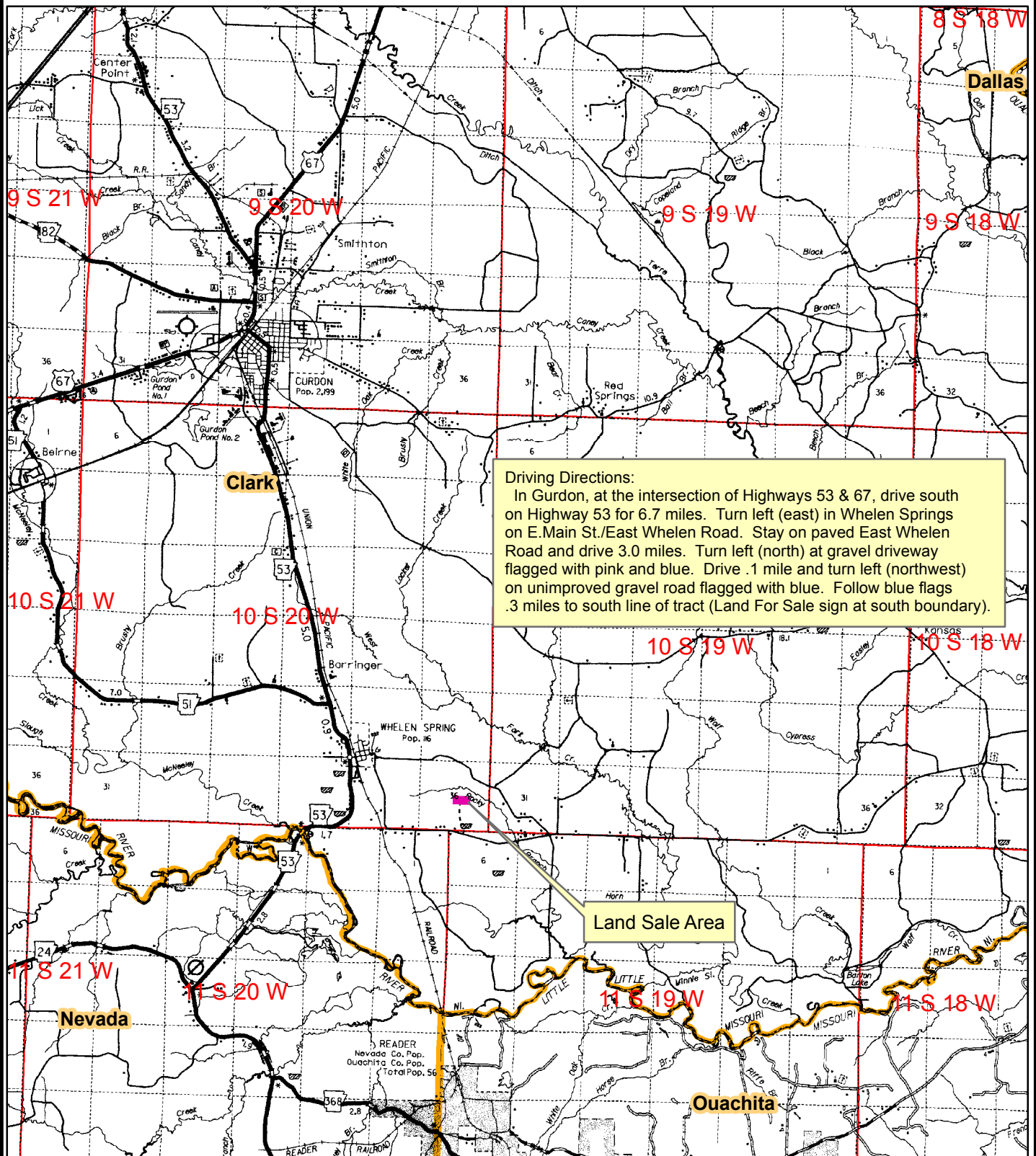


**NOTICE OF LAND SALE**  
**"East Whelen 20" Listing #4333**  
 N½ of NW¼ of SE¼, Sec. 36, T10S, R20W, Clark County, Arkansas  
 Containing 20 acres, more or less



**Driving Directions:**

In Gurdon, at the intersection of Highways 53 & 67, drive south on Highway 53 for 6.7 miles. Turn left (east) in Whelen Springs on E.Main St./East Whelen Road. Stay on paved East Whelen Road and drive 3.0 miles. Turn left (north) at gravel driveway flagged with pink and blue. Drive .1 mile and turn left (northwest) on unimproved gravel road flagged with blue. Follow blue flags .3 miles to south line of tract (Land For Sale sign at south boundary).

**Land Sale Area**

0 0.5 1 2 3  
 Miles

