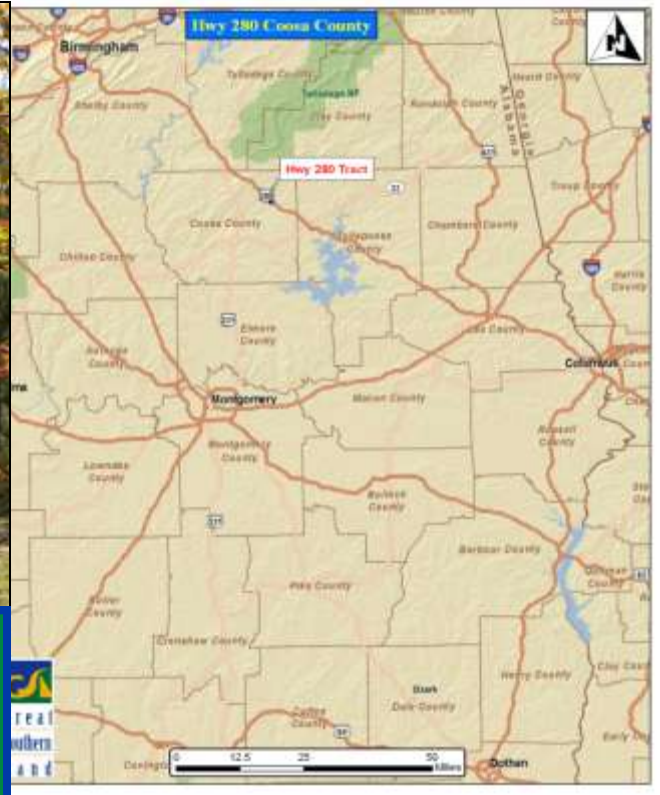




GREAT SOUTHERN Land



Highway 280 #22-001
151+/- Acres in Coosa County, AL
Offered for \$328,000 (\$2,172/acre)

If you are looking to buy land, the Highway 280 tract is truly a beautiful piece of property and a sound investment as well. There are approximately 126 acres of 9 year old healthy planted loblolly pines that were planted in January 2003 and fertilized in 2006. They have really grown well and look great. The rolling topography that dips down to two nice hardwood bottoms with lots of large white oaks. Each bottom has a beautiful year round spring fed stream bordered with native azaleas, ferns, and even mountain laurel. . Also, there are several nice lake sites located on each stream.

Five nice game plots all with nice shooting houses provide excellent hunting opportunities as well as food for the abundant deer and turkey. Each of the game plots can be easily reached via a good internal road system. This is excellent timber growing land with a good site index, yet it also has frontage +/- 1300 feet on U.S. Highway 280.

This rural property fronts on County Road 28, so there is easy access to the entire tract. Located only 10 miles from Alexander City, 15 miles from Lake Martin, and 50 miles from Birmingham. This land would be ideal for building a hunting camp or a nice country home with lots of privacy.

www.GreatSouthernLand.com



Great
Southern
Land

For a tour or more information call:
Bill Atkins, Listing Agent
334-567-0924 ext. 207
334-399-9397 cell
batkins@knology.net

Fletcher Majors, ALC, Broker
334-567-0924 ext. 205
334-328-9278 cell
Fletcher@GreatSouthernLand.com





Five nice shooting houses and planted green fields make this property ideal for hunting

Two beautiful rocky streams meander through the property where you will find mature hardwoods, native Azaleas, and Mountain Laurel



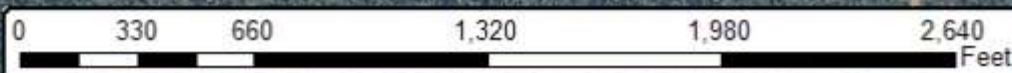


**Planted game
plots surrounded by
planted pines and
hardwood areas**

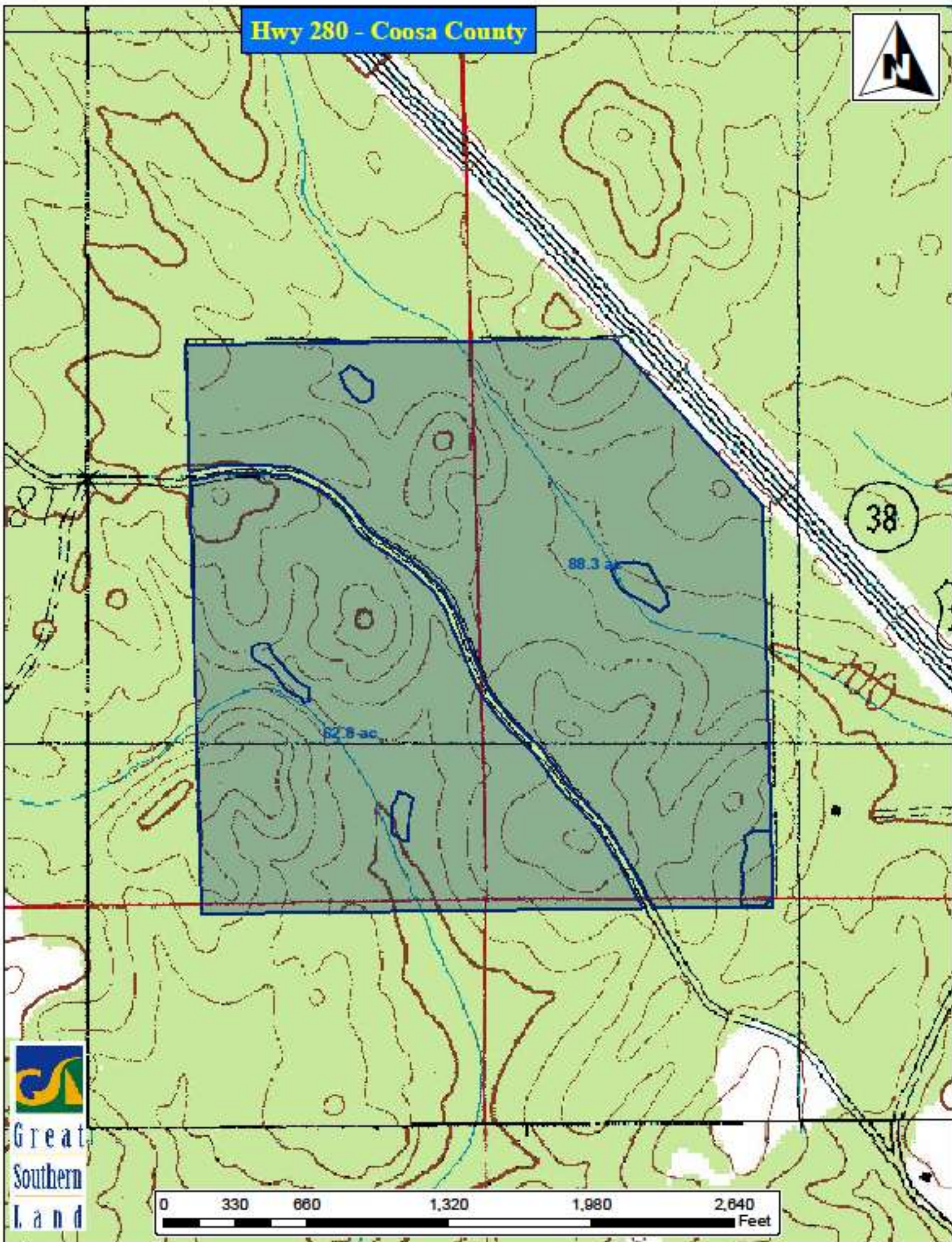


**Nice
hardwood
creek bottom**

Hwy 280 - Coosa County



Hwy 280 - Coosa County



Great
Southern
Land

0 330 660 1,320 1,980 2,640 Feet





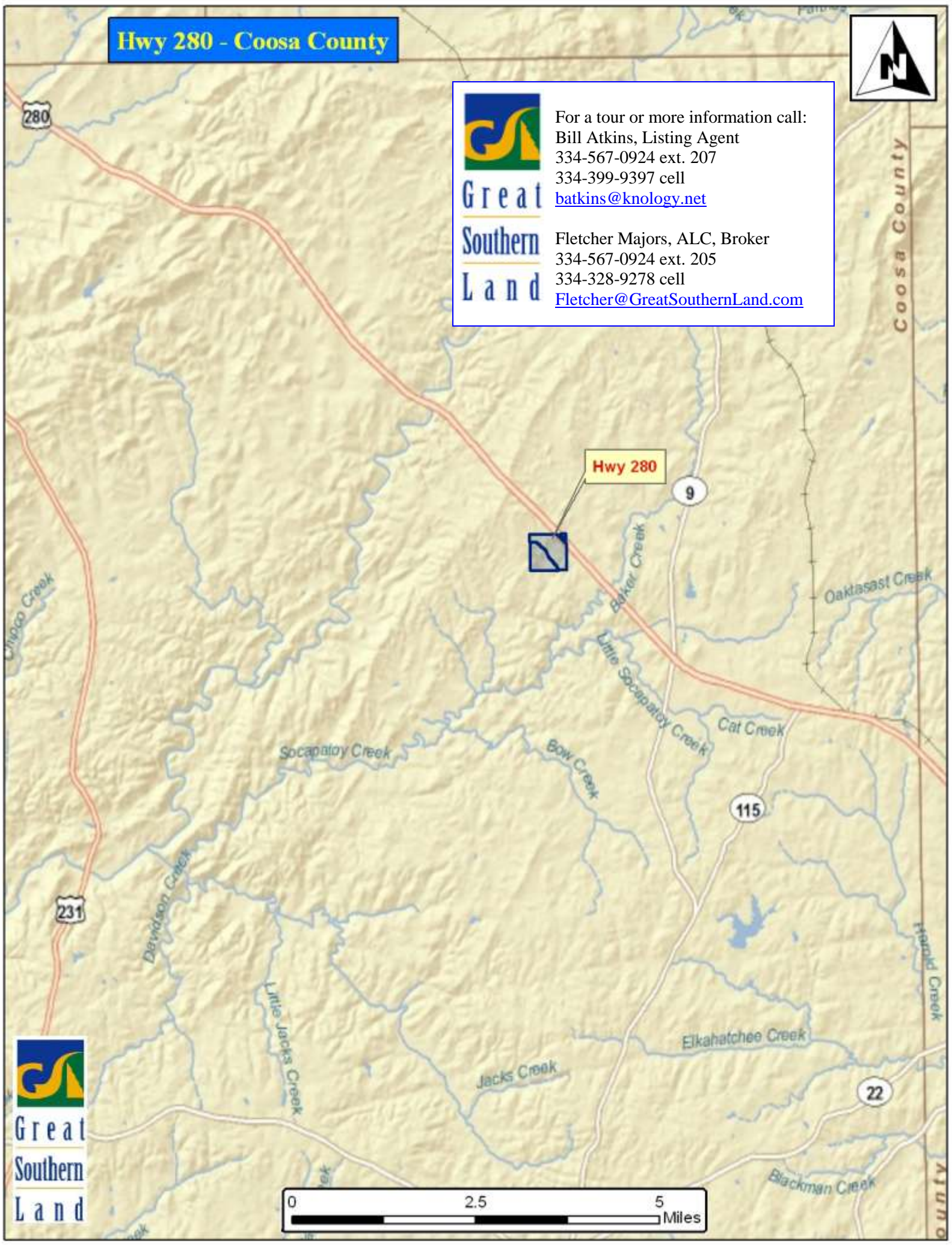
Hwy 280 - Coosa County



Great
Southern
Land

For a tour or more information call:
Bill Atkins, Listing Agent
334-567-0924 ext. 207
334-399-9397 cell
batkins@knology.net

Fletcher Majors, ALC, Broker
334-567-0924 ext. 205
334-328-9278 cell
Fletcher@GreatSouthernLand.com



Great
Southern
Land

0 2.5 5 Miles