

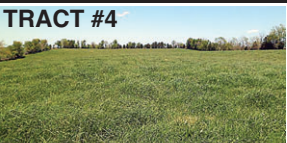
ABSOLUTE AUCTION

GEORGE ARTHUR & GENEVA MATTINGLY ESTATE'S
98.88 ACRES, M/L
IN 8 TRACTS

SAT., APRIL 21 - 10:30 A.M.

LOCATED:
 1110
McELROY PIKE,
LEBANON, KY

One mile off
 Campbellsville Rd.



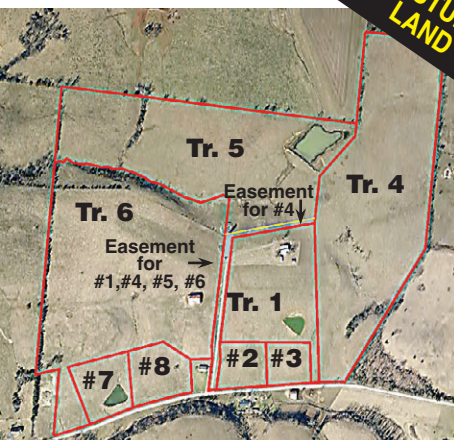
TRACT #1 - 9.31 ACRES, m/l with a house that consists of living room, kitchen, 4 bedrooms, 1 bath, utility space, and rear covered deck. Land offers many nice home sites with a pond. This tract mostly cropland.

TRACT #2 & #3 - (#2) 1.94 ACRES, m/l; (#3) 1.66 ACRES, m/l. Nice building lots.

TRACT #4 - 26.28 ACRES, m/l, offering pasture and cropland with nice home sites.

TRACT #5 - 24.56 ACRES, m/l offering pasture & cropland with a pond.

TRACT #6 - 29.48 ACRES, m/l offering pasture & cropland with nice home sites.



TRACT #7 & #8 - (#7) 2.82 ACRES, m/l with pond. **(#8) 2.83 ACRES, m/l.** Nice building lots.

ORDER OF SALE

- SALE #1**
FIRST - Whole, 98.88 acres, m/l
- SALE #2**
SECOND - Tracts #1 thru #5 grouped being 63.75 ac. m/l
- THIRD - Tracts #6 thru #8 grouped being 35.13 ac. m/l
- SALE #3**
FOURTH - Tract #1 - house tract
- FIFTH - Tracts #4, #5 & #6 by the acre, pick & choose the tract(s) you desire.
- SIXTH - Tracts #2, #3, #7 & #8 by the tract, pick & choose.

House was built prior to 1978 and there is the possibility for the presence of lead base paint. This serves as buyer's 10-day notice prior to auction to do inspection.

For photos, survey, aerial maps & soil maps go to
www.mayandparman.com

NOTE: **10%** buyer's premium will be added to all winning bids to determine final sales price.

ANNOUNCEMENTS DAY OF SALE SUPERSEDE PRIOR ANNOUNCEMENTS.
 PRINCIPAL AUCTIONEER/BROKER
 WILLIAM M. (MONTY) PARMAN
 AUCTIONEERS - EARL L. SANDUSKY, JERRY TUTT & DOUG THOMPSON

MAY & PARMAN AGENCY INC.
 REAL ESTATE-AUCTIONS-INSURANCE
www.mayandparman.com

151 West Main Street
 270-692-2153
 1-800-871-0523
 Lebanon, KY 40033