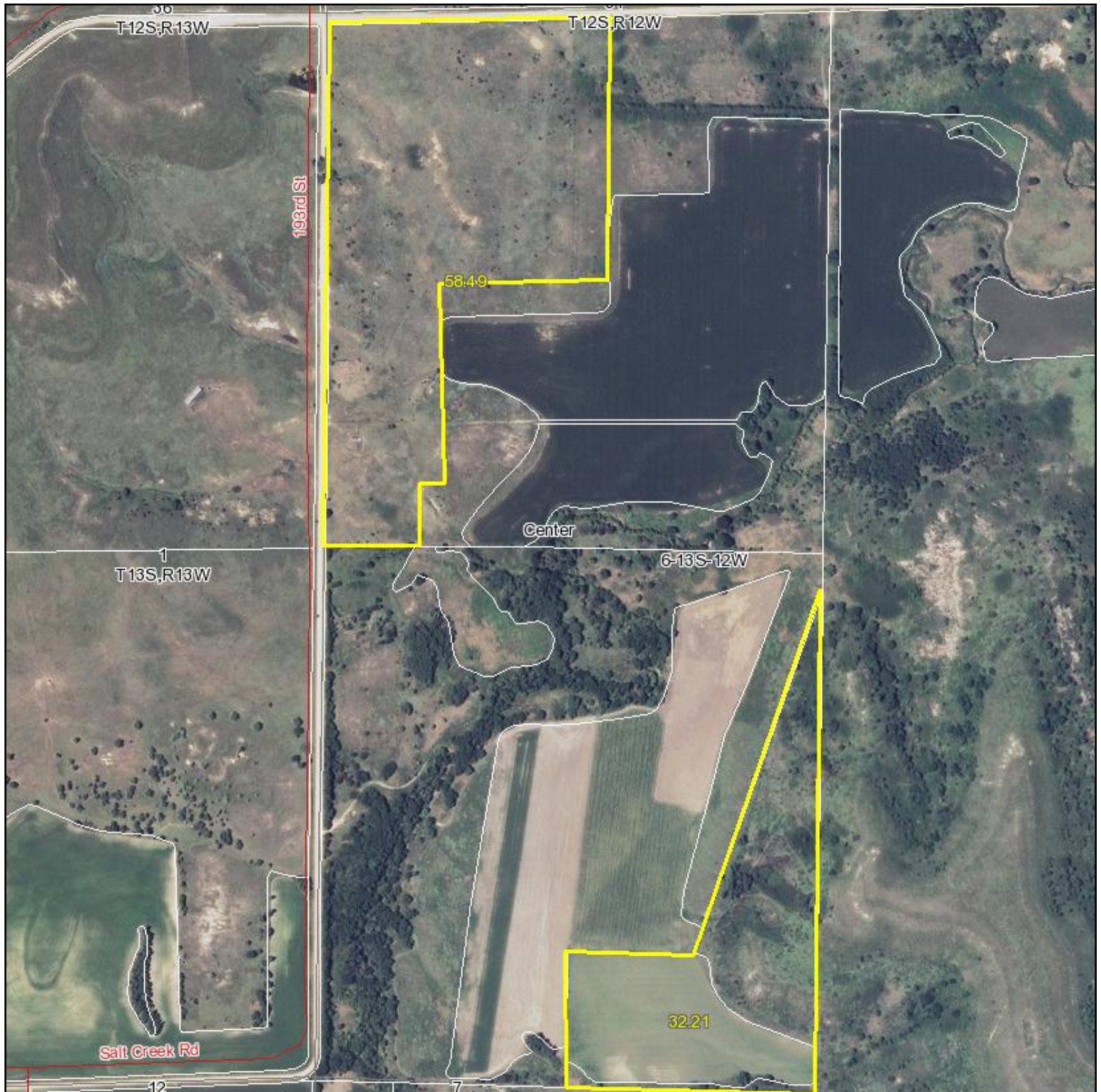


Aerial Map



NICK RHODES
WILDLIFE PROPERTIES

Maps provided by:



©AgriData, Inc. 2012

www.AgriDataInc.com

6-13S-12W
Russell County
Kansas

map center: 38° 57' 3.73, 98° 42' 6.94

scale: 9444



4/2/2012

Field borders provided by Farm Service Agency as of 5/21/2008. Aerial photography provided by Aerial Photography Field Office.