

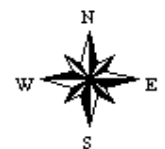
Aerial Map



map center: 39° 2' 11.29, 95° 34' 19.85

scale: 10427

6-12S-17E
Shawnee County
Kansas



3/22/2012



Maps provided by:

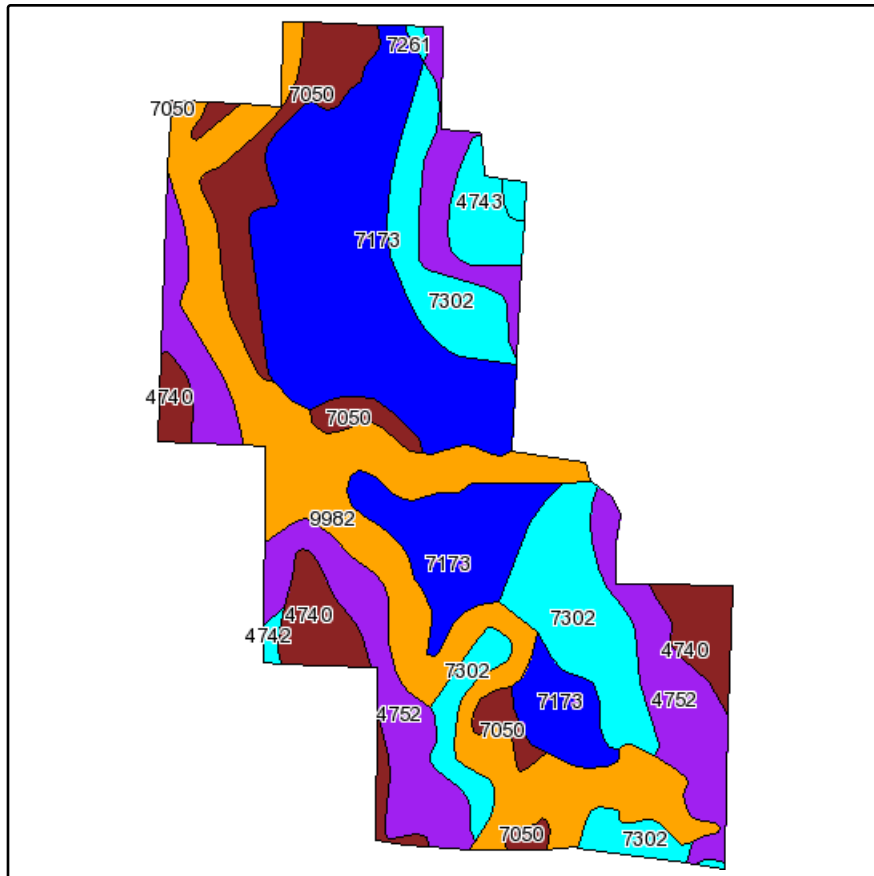


©AgriData, Inc. 2012

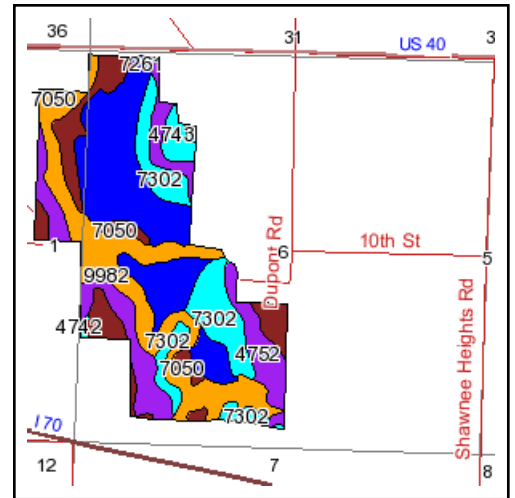
www.AgriDataInc.com

Field borders provided by Farm Service Agency as of 5/21/2008. Aerial photography provided by Aerial Photography Field Office.

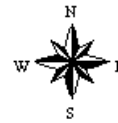
Soils Map



Fsa borders provided by the Farm Service Agency as of May 23, 2008.
Soils data provided by USDA and NRCS.



State: **Kansas**
County: **Shawnee**
Location: **006-012S-017E**
Township: **Tecumseh**
Acres: **228.2**
Date: **3/22/2012**



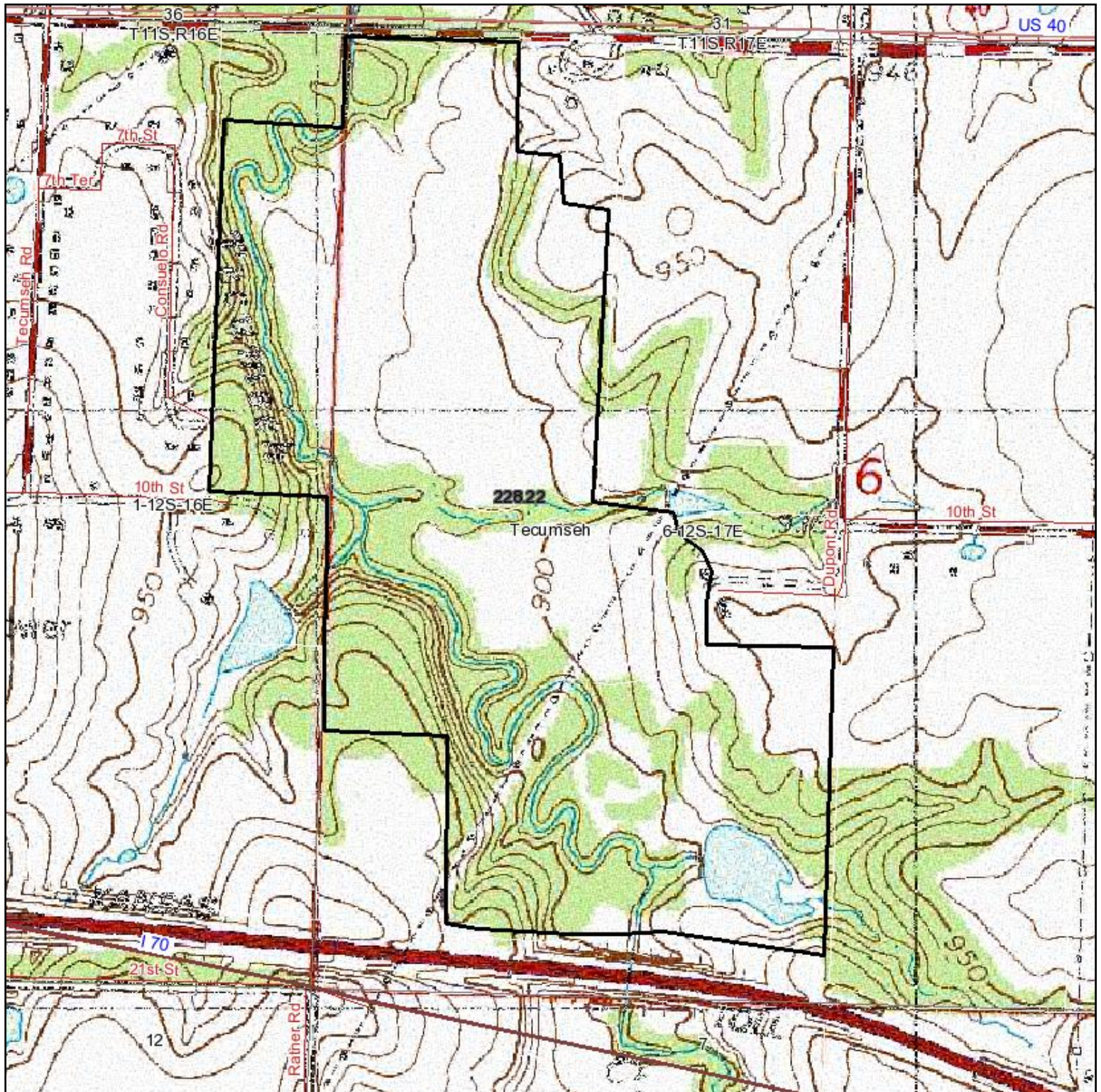
Maps provided by:



©AgriData, Inc 2008
www.AgriDataInc.com

Code	Soil Description	Acres	Percent of field	Non-Irr Class Legend	Non-Irr Class	Soybeans	Brome grass alfalfa	Alfalfa hay	Corn	Oats	Brome grass alfalfa hay	Smooth brome grass	Grain sorghum
7173	Reading silty clay loam, rarely flooded	64.3	28.2%		I	35		6	74			7	82
9982	Fluvents, frequently flooded	52.2	22.9%		VIW								
4752	Sogn-Vinland complex, 3 to 25 percent slopes	39.8	17.5%		VIIIs							3	
7302	Martin silty clay loam, 3 to 7 percent slopes	33.9	14.9%		IIle	35		3	75			6	55
7050	Kennebec silt loam, occasionally flooded	17.6	7.7%		IIW	54	11		162	97	7	7	
4740	Labette silty clay loam, 1 to 3 percent slopes	13.7	6.0%		Ile	23		3	45			5	57
4743	Labette silty clay loam, 3 to 7 percent slopes, eroded	5	2.2%		IIle	20		3	36			5	51
3891	Ladysmith silty clay loam, 1 to 3 percent slopes	0.7	0.3%		IIle	24		3	44			5	55
4742	Labette silty clay loam, 3 to 7 percent slopes	0.6	0.2%		IIle	20		3	40			5	54
7261	Gymer silt loam, 3 to 7 percent slopes	0.4	0.2%		IIle	35		4	74			6	71
Weighted Average						21.2	0.8	2.4	48.4	7.5	0.5	4.4	36.3

Topography Map



map center: 39° 2' 11.29, 95° 34' 19.85

scale: 10427

6-12S-17E
Shawnee County
Kansas



3/22/2012



Maps provided by:



©AgriData, Inc. 2012

www.AgriDataInc.com

Field borders provided by Farm Service Agency as of 5/21/2008. Aerial photography provided by Aerial Photography Field Office.