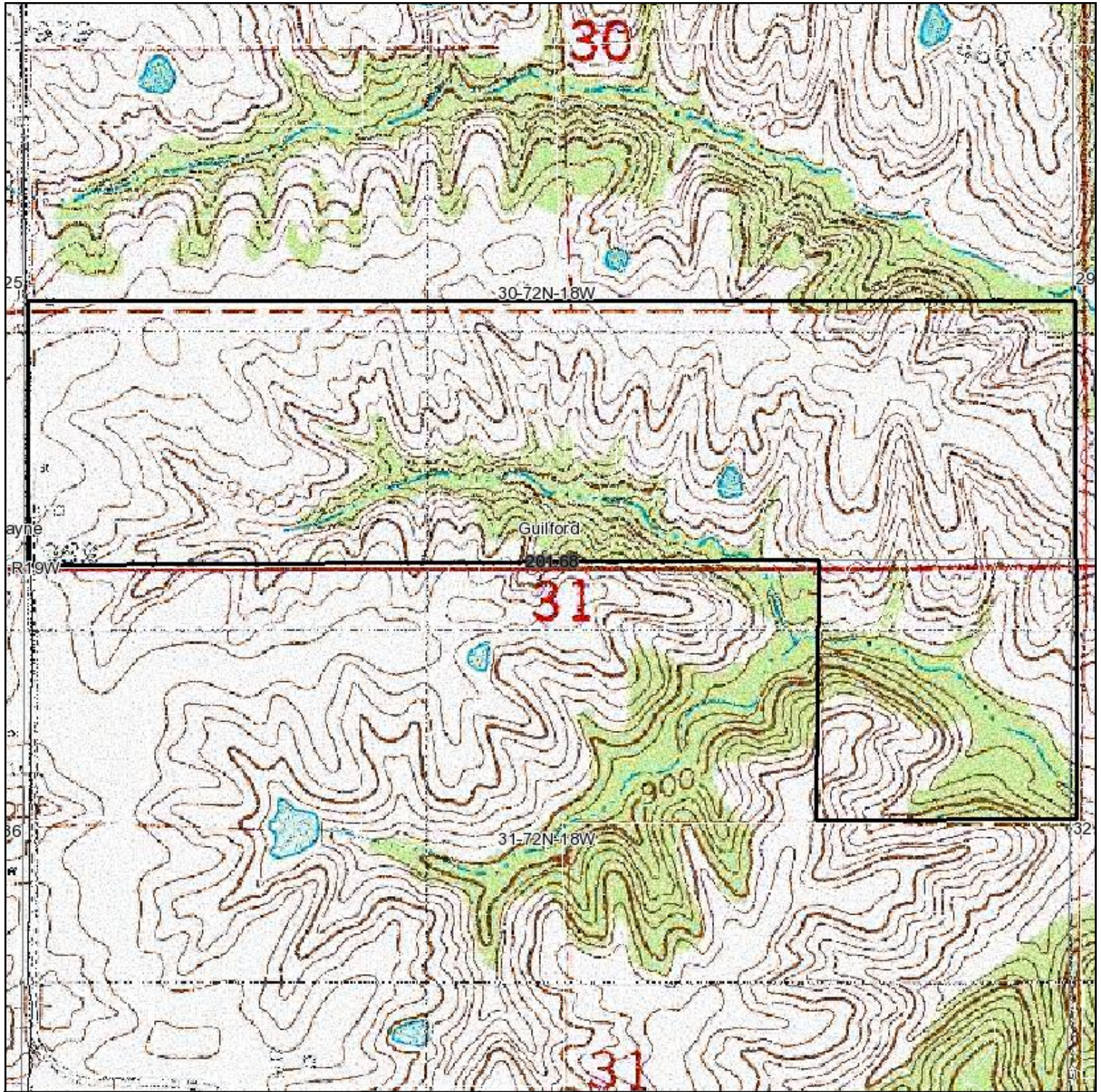


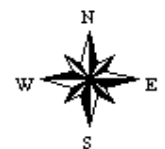
Topography Map



map center: 41° 0' 4.07, 92° 58' 26.71

scale: 9644

30-72N-18W
Monroe County
Iowa



Maps provided by:



©AgriData, Inc. 2012

www.AgriDataInc.com

1/23/2012

Field borders provided by Farm Service Agency as of 5/21/2008. Aerial photography provided by Aerial Photography Field Office.