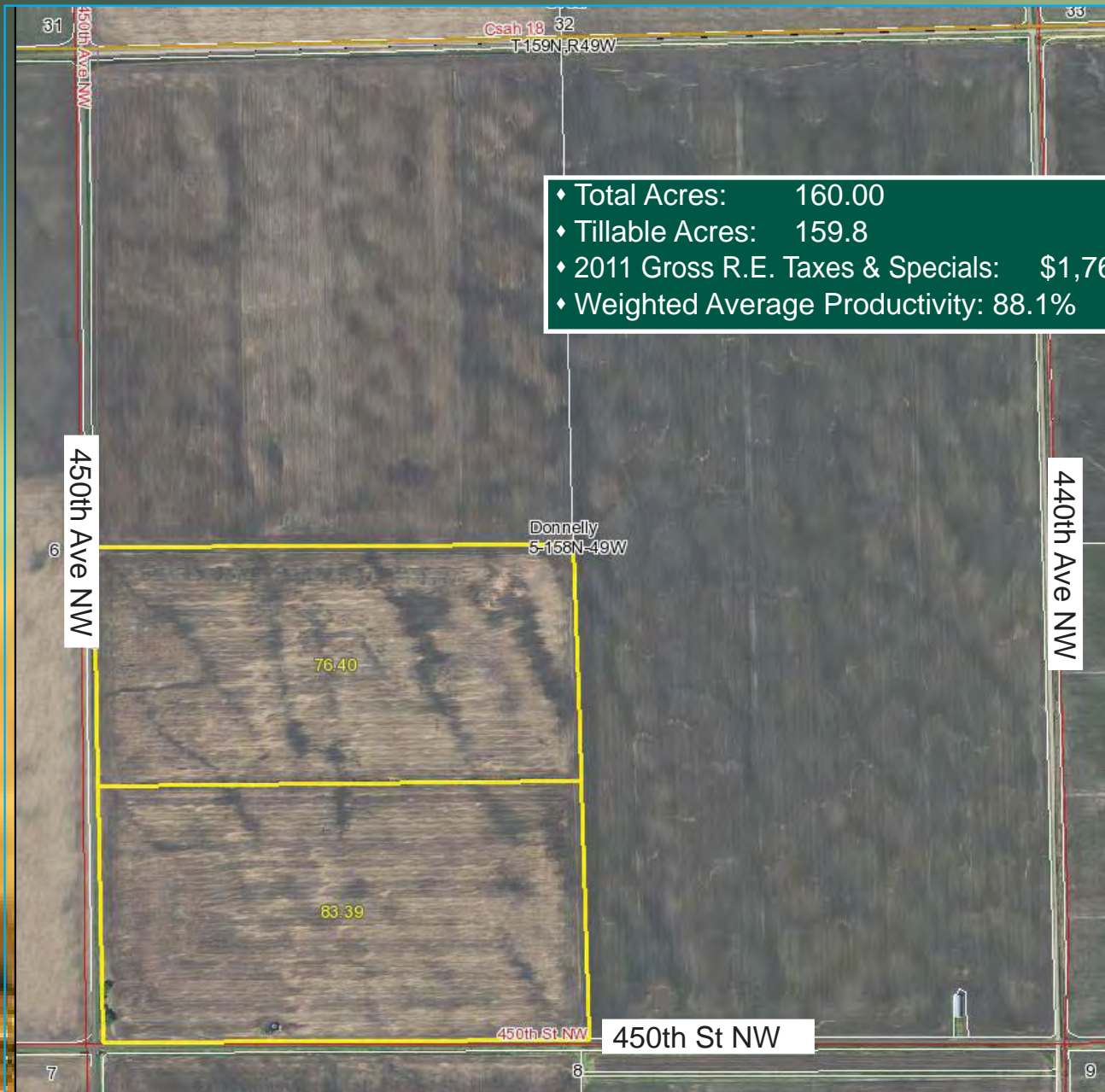


FOR SALE: MARSHALL COUNTY, MN FARM LAND

SW 1/4 Section 5-158-49 • Approximately 160.00 Acres Near Hallock, MN



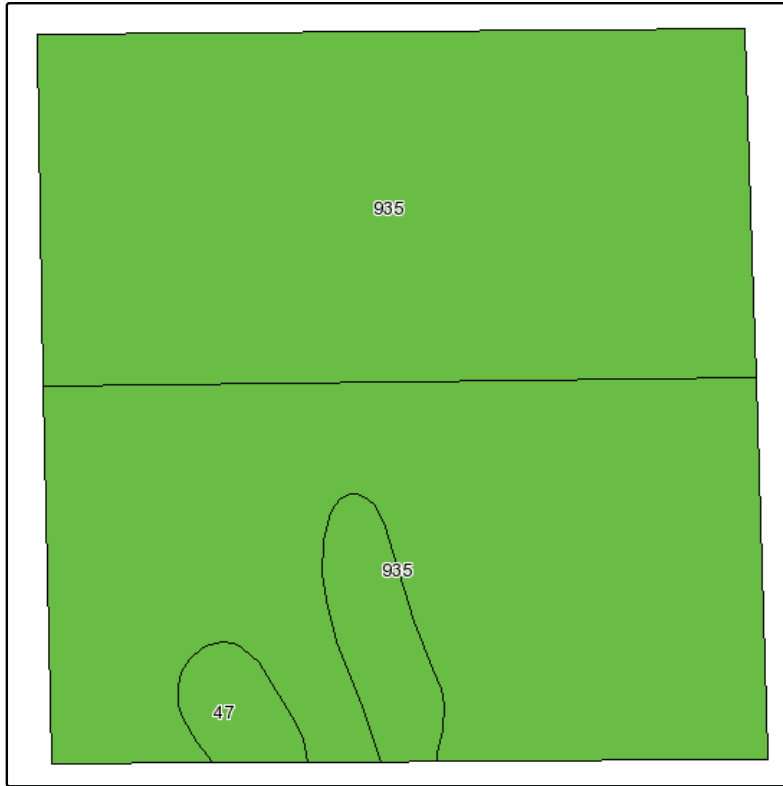
- ♦ Total Acres: 160.00
- ♦ Tillable Acres: 159.8
- ♦ 2011 Gross R.E. Taxes & Specials: \$1,760.⁰⁰
- ♦ Weighted Average Productivity: 88.1%



FOR SALE: MARSHALL COUNTY, MN FARM LAND

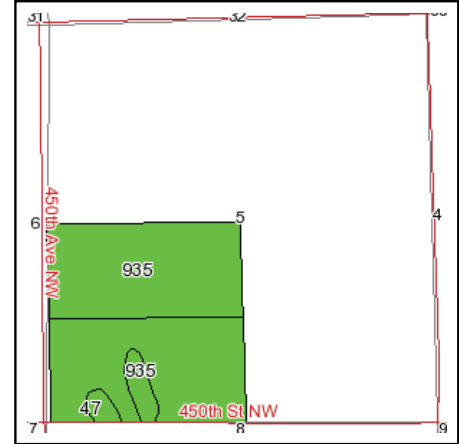
SW 1/4 Section 5-158-49 • Approximately 160.00 Acres Near Hallock, MN

Soils Map



Fsa borders provided by the Farm Service Agency as of May 23, 2008.
Soils data provided by USDA and NRCS.

| Code | Soil Description | Acres | Percent of field | Non-Irr Class Legend | Non-Irr Class | Productivity Index |
|------------------|------------------------|-------|------------------|----------------------|---------------|--------------------|
| 935 | Hegne-Fargo complex | 150.4 | 94.1% | | IIw | 88 |
| 47 | Colvin silty clay loam | 9.4 | 5.9% | | IIw | 89 |
| Weighted Average | | | | | | 88.1 |



State: **Minnesota**
County: **Marshall**
Location: **005-158N-049W**
Township: **Donnelly**
Acres: **159.8**



Steve Johnson
Farm Land Sales Realtor
701-799-5213
steve@prglandsales.com



4265 45th Street South - Suite 200
Fargo, North Dakota 58104
www.propertyresourcesgroup.com

FOR SALE: KITTSON COUNTY, MN FARM LAND

NW 1/4, SW 1/4, NE 1/4, N 1/2 N 1/2 SE 1/4 Section 28-159-48
Approximately 520.00 Acres Near Warren, MN



- ♦ Total Acres: 502.00
- ♦ Tillable Acres: 510.3
- ♦ 2011 Gross R.E. Taxes & Specials: \$5,604.⁰⁰
- ♦ Weighted Average Productivity: 68.3%



Steve Johnson
Realtor
701-799-5213
steve@prglandsales.com



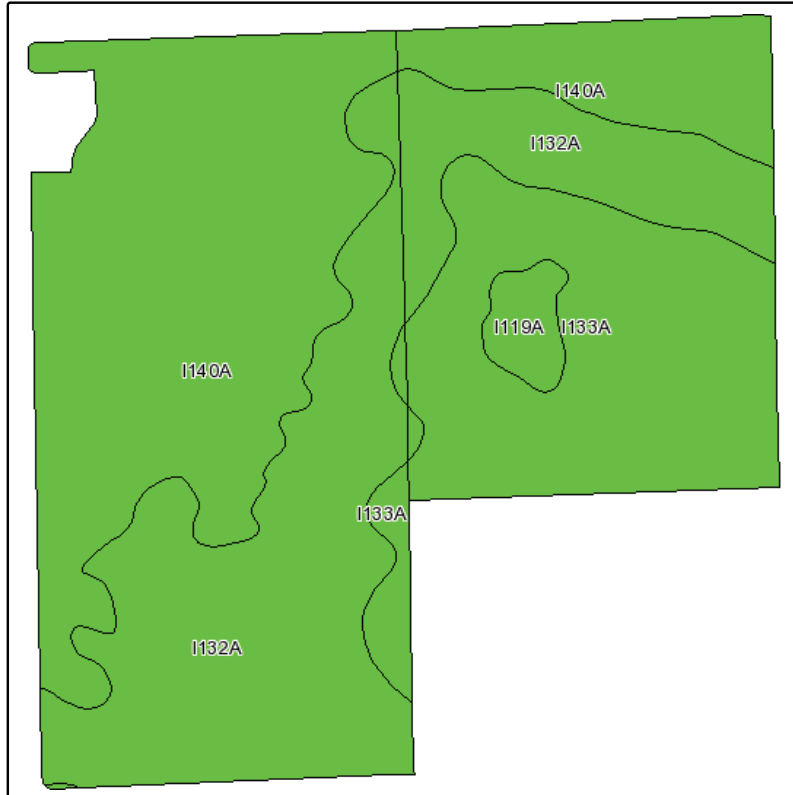
4265 45th Street South - Suite 200
Fargo, North Dakota 58104
www.propertyresourcesgroup.com

FOR SALE: KITTSON COUNTY, MN FARM LAND

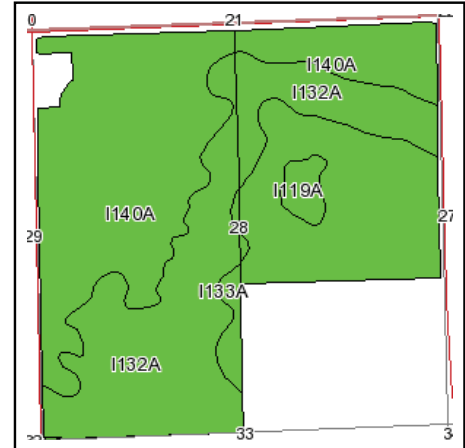
NW 1/4, SW 1/4, NE 1/4, N 1/2 N 1/2 SE 1/4 Section 28-159-48

Approximately 520.00 Acres Near Warren, MN

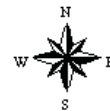
Soils Map



Fsa borders provided by the Farm Service Agency as of May 23, 2008.
Soils data provided by USDA and NRCS.



State: **Minnesota**
County: **Kittson**
Location: **028-159N-048W**
Township: **Davis**
Acres: **510.3**



| Code | Soil Description | Acres | Percent of field | Non-Irr Class Legend | Non-Irr Class | Productivity Index |
|-------------------------|---|-------|------------------|----------------------|---------------|--------------------|
| I140A | Northcote clay, saline, 0 to 2 percent slopes | 210.2 | 41.2% | | IIw | 64 |
| I132A | Northcote-Eaglepoint clays, 0 to 2 percent slopes | 173.8 | 34.1% | | IIw | 69 |
| I133A | Northcote clay, 0 to 1 percent slopes | 116.9 | 22.9% | | IIw | 73 |
| I119A | Bearden silty clay loam, 0 to 1 percent slopes | 9.4 | 1.8% | | IIs | 93 |
| Weighted Average | | | | | | 68.3 |



Steve Johnson
Realtor
701-799-5213
steve@prglandsales.com

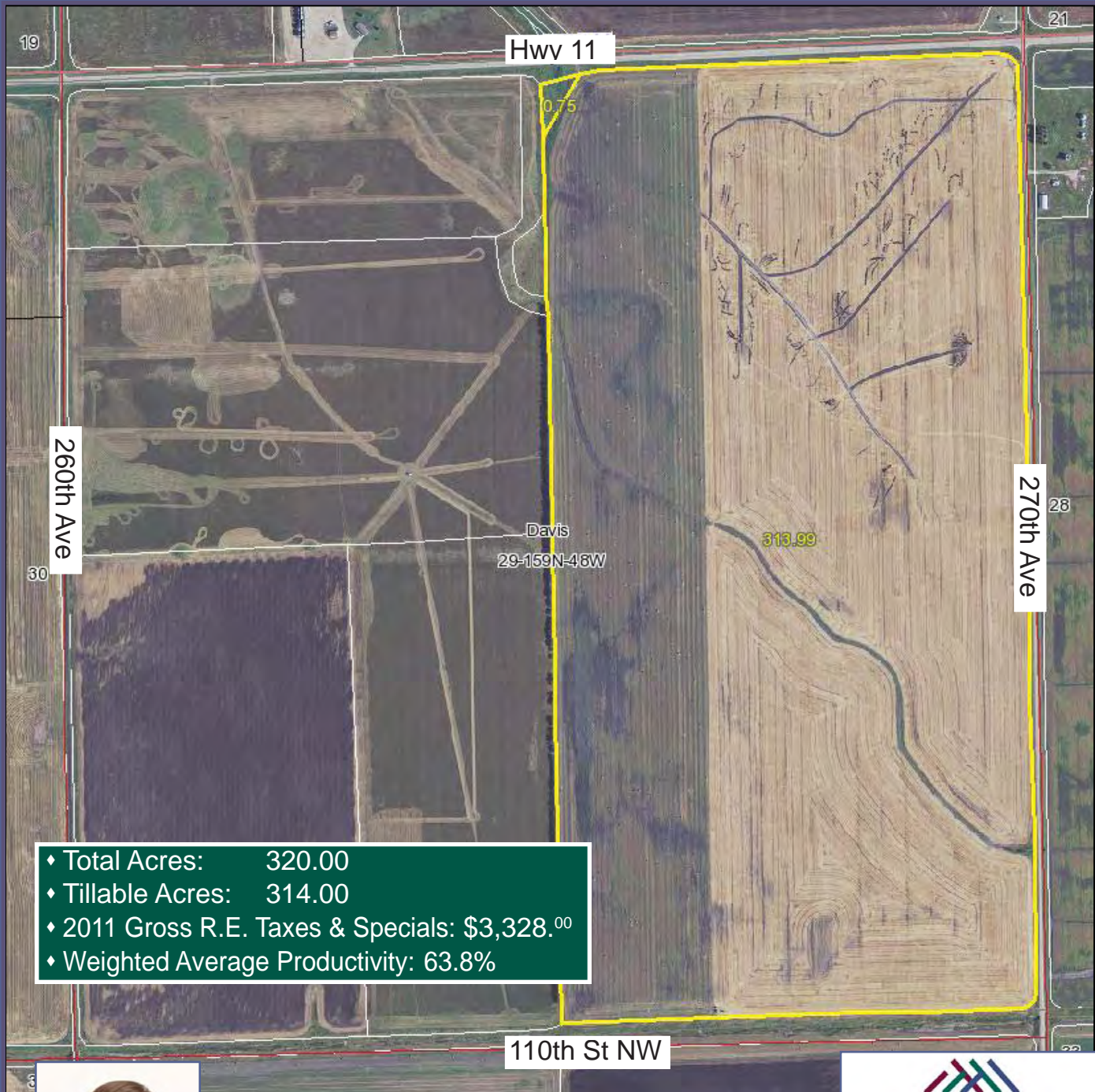


4265 45th Street South - Suite 200
Fargo, North Dakota 58104
www.propertyresourcesgroup.com

FOR SALE: KITTSON COUNTY, MN FARM LAND

E 1/2 Section 29-159-48

Approximately 320.00 Acres Near Warren, MN



- ♦ Total Acres: 320.00
- ♦ Tillable Acres: 314.00
- ♦ 2011 Gross R.E. Taxes & Specials: \$3,328.⁰⁰
- ♦ Weighted Average Productivity: 63.8%



Steve Johnson
Realtor
701-799-5213
steve@prglandsales.com



PROPERTY RESOURCES GROUP

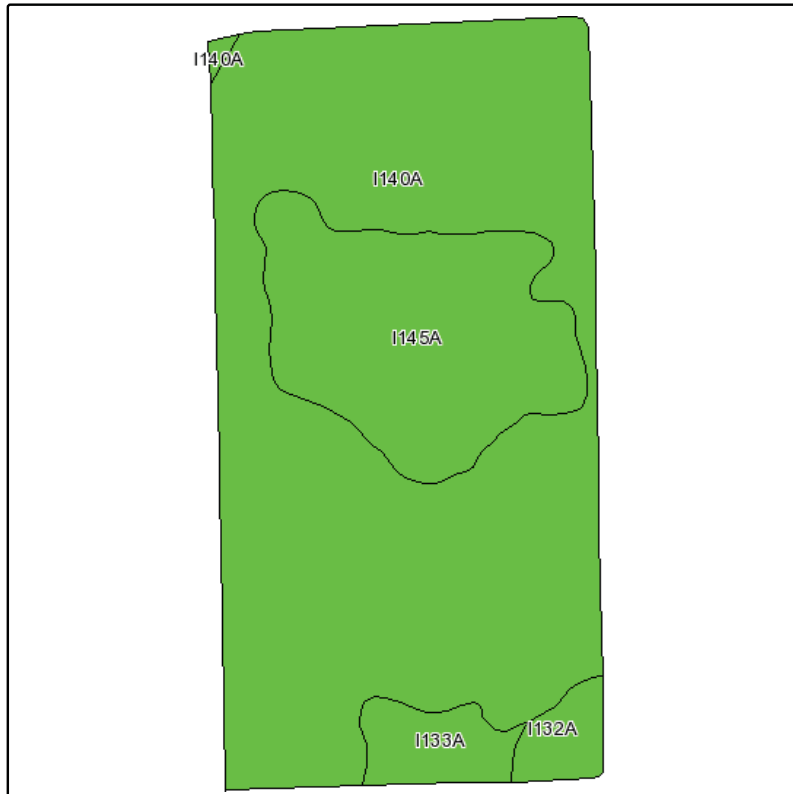
4265 45th Street South - Suite 200
Fargo, North Dakota 58104
www.propertyresourcesgroup.com

FOR SALE: KITTSON COUNTY, MN FARM LAND

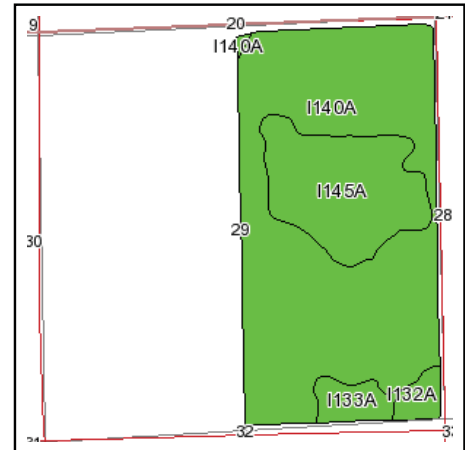
E 1/2 Section 29-159-48

Approximately 320.00 Acres Near Warren, MN

Soils Map



Fsa borders provided by the Farm Service Agency as of May 23, 2008.
Soils data provided by USDA and NRCS.



State: **Minnesota**
County: **Kittson**
Location: **029-159N-048W**
Township: **Davis**
Acres: **314.8**



| Code | Soil Description | Acres | Percent of field | Non-Irr Class Legend | Non-Irr Class | Productivity Index |
|-------------------------|---|-------|------------------|----------------------|---------------|--------------------|
| I140A | Northcote clay, saline, 0 to 2 percent slopes | 226.1 | 71.8% | | IIw | 64 |
| I145A | Northcote-Eaglepoint clays, saline, 0 to 2 percent slopes | 68.9 | 21.9% | | IIw | 61 |
| I133A | Northcote clay, 0 to 1 percent slopes | 12.2 | 3.9% | | IIw | 73 |
| I132A | Northcote-Eaglepoint clays, 0 to 2 percent slopes | 7.6 | 2.4% | | IIw | 69 |
| Weighted Average | | | | | | 63.8 |



Steve Johnson
Realtor
701-799-5213
steve@prglandsales.com



4265 45th Street South - Suite 200
Fargo, North Dakota 58104
www.propertyresourcesgroup.com

FOR SALE: KITTSON COUNTY, MN FARM LAND

E 1/2 Section 32-159-48 • Approximately 319.07 Acres Near Hallock, MN



- ♦ Total Acres: 319.07
- ♦ Tillable Acres: 310.00
- ♦ 2011 Gross R.E. Taxes & Specials: \$3,492.⁰⁰
- ♦ Weighted Average Productivity: 69.7%

Driving Directions:

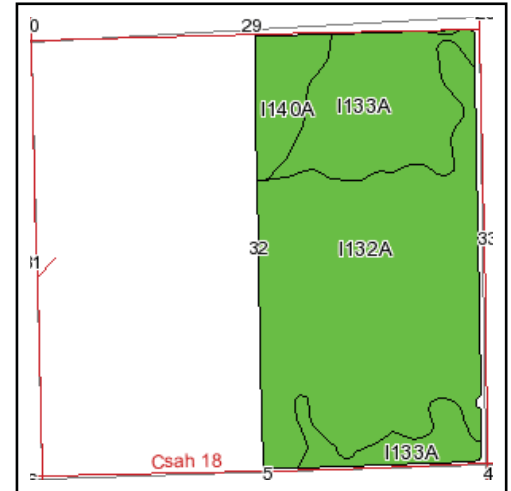
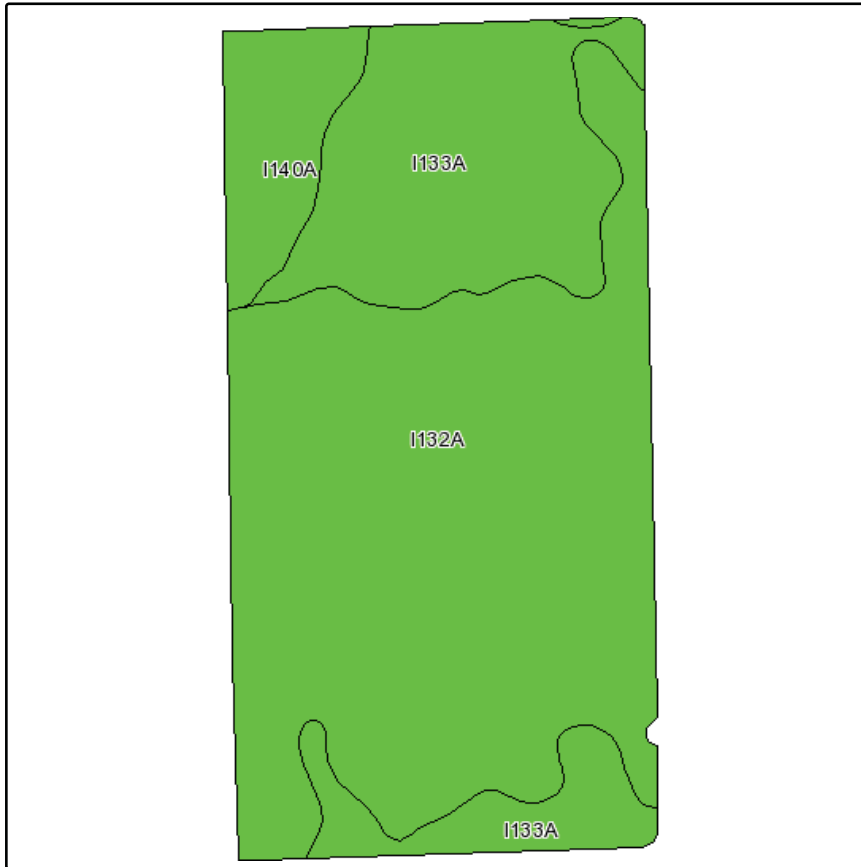
- ♦ From Hallock, MN take Hwy 75 14 miles South to Donaldson, MN.
- ♦ From Donaldson go 2 miles South on Hwy 75.
- ♦ Go 1/2 mile east on Hwy 18/460th St NW.
- ♦ You are now at the SW corner of the property.



FOR SALE: KITTSON COUNTY, MN FARM LAND

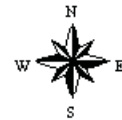
E 1/2 Section 32-159-48 • Approximately 319.07 Acres Near Hallock, MN

Soils Map



State: **Minnesota**
 County: **Kittson**
 Location: **032-159N-048W**
 Township: **Davis**
 Acres: **310**

Fsa borders provided by the Farm Service Agency as of May 23, 2008.
 Soils data provided by USDA and NRCS.



| Code | Soil Description | Acres | Percent of field | Non-Irr Class Legend | Non-Irr Class | Productivity Index |
|------------------|---|-------|------------------|----------------------|---------------|--------------------|
| I132A | Northcote-Eaglepoint clays, 0 to 2 percent slopes | 199.8 | 64.5% | | Ilw | 69 |
| I133A | Northcote clay, 0 to 1 percent slopes | 86.8 | 28.0% | | Ilw | 73 |
| I140A | Northcote clay, saline, 0 to 2 percent slopes | 23.4 | 7.5% | | Ilw | 64 |
| Weighted Average | | | | | | 69.7 |



Steve Johnson
 Farm Land Sales Realtor
 701-799-5213
steve@prglandsales.com



4265 45th Street South - Suite 200
 Fargo, North Dakota 58104
www.propertyresourcesgroup.com

FOR SALE: KITTSON COUNTY, MN FARM LAND

NW 1/4 Section 34-159-49 • Approximately 160.00 Acres Near Hallock, MN



- ♦ Total Acres: 157.92
- ♦ Tillable Acres: 152.4
- ♦ 2011 Gross R.E. Taxes & Specials: \$1,256.⁰⁰
- ♦ Weighted Average Productivity: 69.0%

Driving Directions:

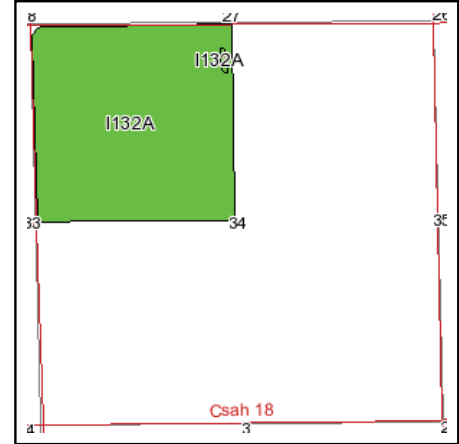
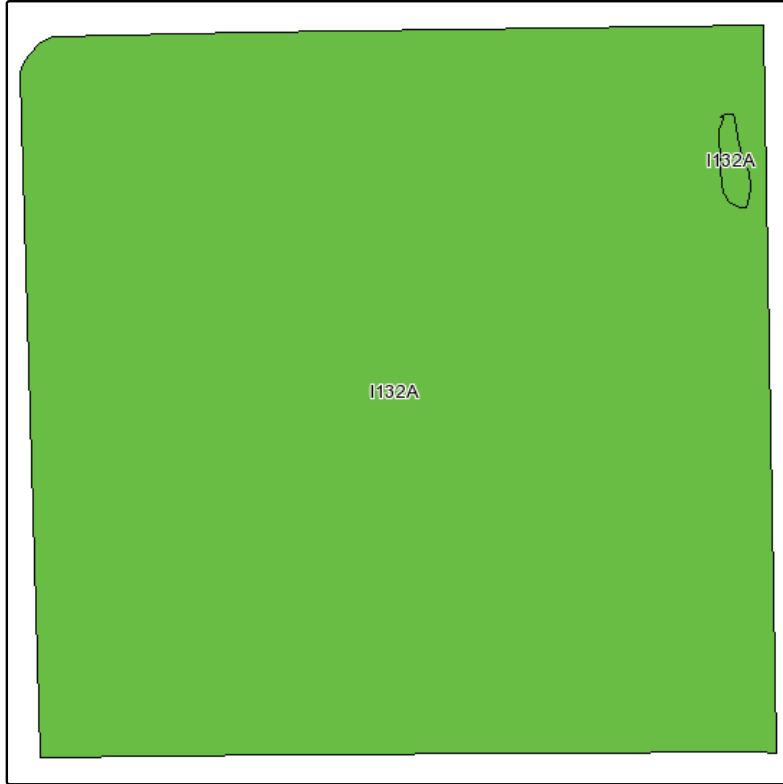
- ♦ From Hallock, MN take Hwy 75 14 miles South to Donaldson, MN.
- ♦ From Donaldson go 2 miles South on Hwy 75.
- ♦ Go 4 miles West on Hwy 18/460th St NW.
- ♦ Go North 1/2 mile.
- ♦ You are now at the SW corner of the property in Section 34.



FOR SALE: KITTSON COUNTY, MN FARM LAND

NW 1/4 Section 34-159-49 • Approximately 160.00 Acres Near Hallock, MN

Soils Map



State: **Minnesota**
 County: **Kittson**
 Location: **034-159N-049W**
 Township: **Svea**
 Acres: **153**

Fsa borders provided by the Farm Service Agency as of May 23, 2008.
 Soils data provided by USDA and NRCS.



| Code | Soil Description | Acres | Percent of field | Non-Irr Class Legend | Non-Irr Class | Productivity Index |
|-------------------------|---|-------|------------------|----------------------|---------------|--------------------|
| I132A | Northcote-Eaglepoint clays, 0 to 2 percent slopes | 153 | 100.0% | | IIw | 69 |
| Weighted Average | | | | | | 69 |



Steve Johnson
 Farm Land Sales Realtor
 701-799-5213
steve@prglandsales.com



4265 45th Street South - Suite 200
 Fargo, North Dakota 58104
www.propertyresourcesgroup.com

FOR SALE: KITTSON COUNTY, MN FARM LAND

N 1/2 & E 1/2 SE 1/4 Section 33-159-49 • Approximately 397.08 Acres Near Hallock, MN



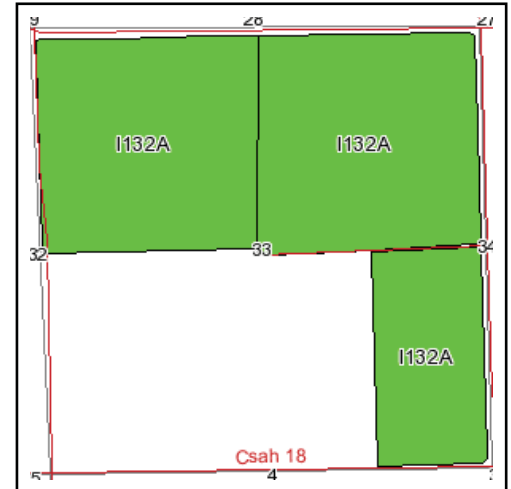
- ♦ Total Acres: 397.08
- ♦ Tillable Acres: 383.9
- ♦ 2011 Gross R.E. Taxes & Specials: \$3,126.00
- ♦ Weighted Average Productivity: 69%



FOR SALE: KITTSON COUNTY, MN FARM LAND

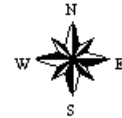
N 1/2 & E 1/2 SE 1/4 Section 33-159-49 • Approximately 397.08 Acres Near Hallock, MN

Soils Map



State: **Minnesota**
 County: **Kittson**
 Location: **033-159N-049W**
 Township: **Svea**
 Acres: **383.9**

Fsa borders provided by the Farm Service Agency as of May 23, 2008.
 Soils data provided by USDA and NRCS.



| Code | Soil Description | Acres | Percent of field | Non-Irr Class Legend | Non-Irr Class | Productivity Index |
|------------------|---|-------|------------------|----------------------|---------------|--------------------|
| I132A | Northcote-Eaglepoint clays, 0 to 2 percent slopes | 383.9 | 100.0% | | Ilw | 69 |
| Weighted Average | | | | | | 69 |



Steve Johnson
 Farm Land Sales Realtor
 701-799-5213
steve@prglandsales.com



4265 45th Street South - Suite 200
 Fargo, North Dakota 58104
www.propertyresourcesgroup.com

FOR SALE: MARSHALL COUNTY, MN FARM LAND

SE 1/4 Section 10-156-47

Approximately 160.00 Acres Near Warren, MN



- ♦ Total Acres: 160.00
- ♦ Tillable Acres: 156.9
- ♦ 2011 Gross R.E. Taxes & Specials: \$1,434.⁰⁰
- ♦ Weighted Average Productivity: 54.0%



Steve Johnson
Realtor
701-799-5213
steve@prglandsales.com



PROPERTY RESOURCES GROUP

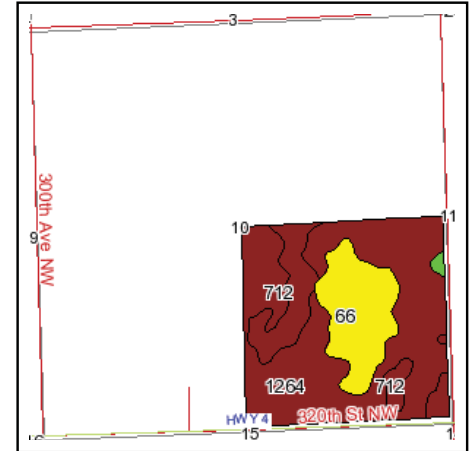
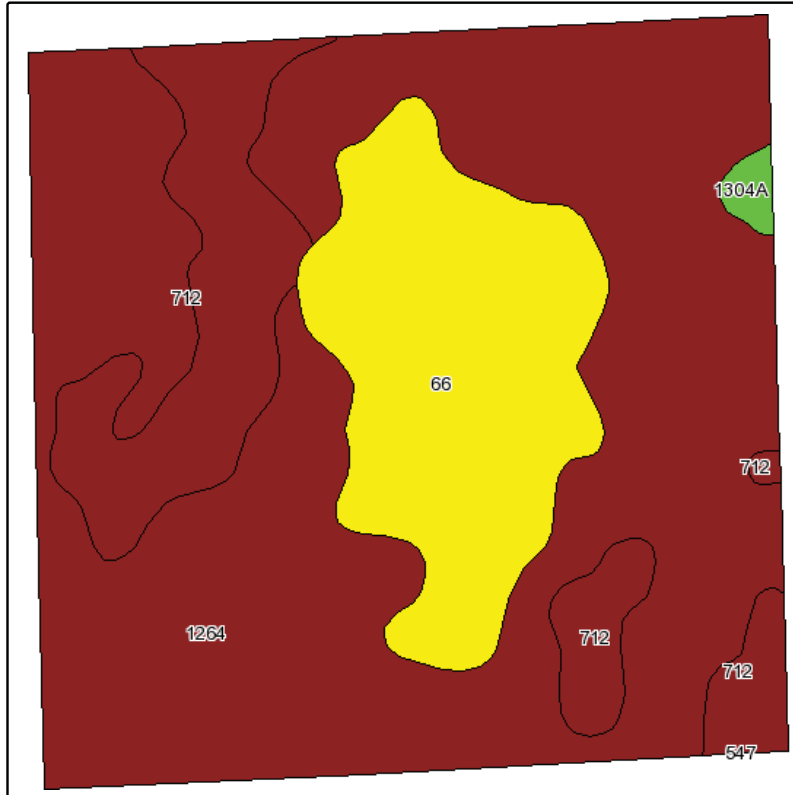
4265 45th Street South - Suite 200
Fargo, North Dakota 58104
www.propertyresourcesgroup.com

FOR SALE: MARSHALL COUNTY, MN FARM LAND

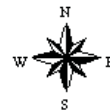
SE 1/4 Section 10-156-47

Approximately 160.00 Acres Near Warren, MN

Soils Map



State: **Minnesota**
 County: **Marshall**
 Location: **010-156N-047W**
 Township: **Alma**
 Acres: **156.9**



Fsa borders provided by the Farm Service Agency as of May 23, 2008.
 Soils data provided by USDA and NRCS.

| Code | Soil Description | Acres | Percent of field | Non-Irr Class Legend | Non-Irr Class | Productivity Index |
|------------------|---|-------|------------------|----------------------|---------------|--------------------|
| 1264 | Ulen loamy fine sand | 101.3 | 64.6% | | IIIs | 55 |
| 66 | Flaming loamy fine sand | 31.2 | 19.9% | | IVs | 49 |
| 712 | Rosewood fine sandy loam | 23.4 | 14.9% | | IIIw | 55 |
| 1304A | Glyndon very fine sandy loam, 0 to 2 percent slopes | 1 | 0.6% | | IIs | 89 |
| Weighted Average | | | | | | 54 |



Steve Johnson
 Realtor
 701-799-5213
steve@prglandsales.com



4265 45th Street South - Suite 200
 Fargo, North Dakota 58104
www.propertyresourcesgroup.com

FOR SALE: MARSHALL COUNTY, MN FARM LAND

SE 1/4 Section 11-157-47

Approximately 160.00 Acres Near Warren, MN



- ♦ DRAIN TILED LAND
- ♦ Total Acres: 160.00
- ♦ Tillable Acres: 161.5
- ♦ 2011 Gross R.E. Taxes & Specials: \$622.⁰⁰
- ♦ Weighted Average Productivity: 56.1%



Steve Johnson
Realtor
701-799-5213
steve@prglandsales.com



PROPERTY RESOURCES GROUP

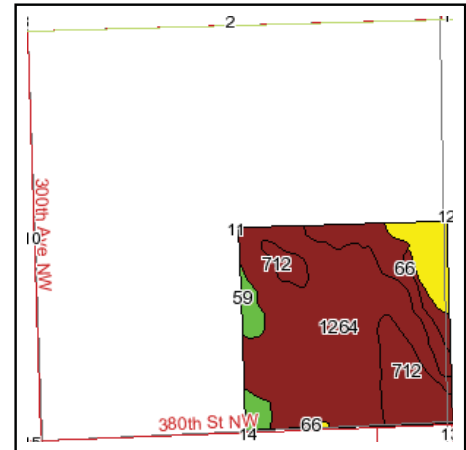
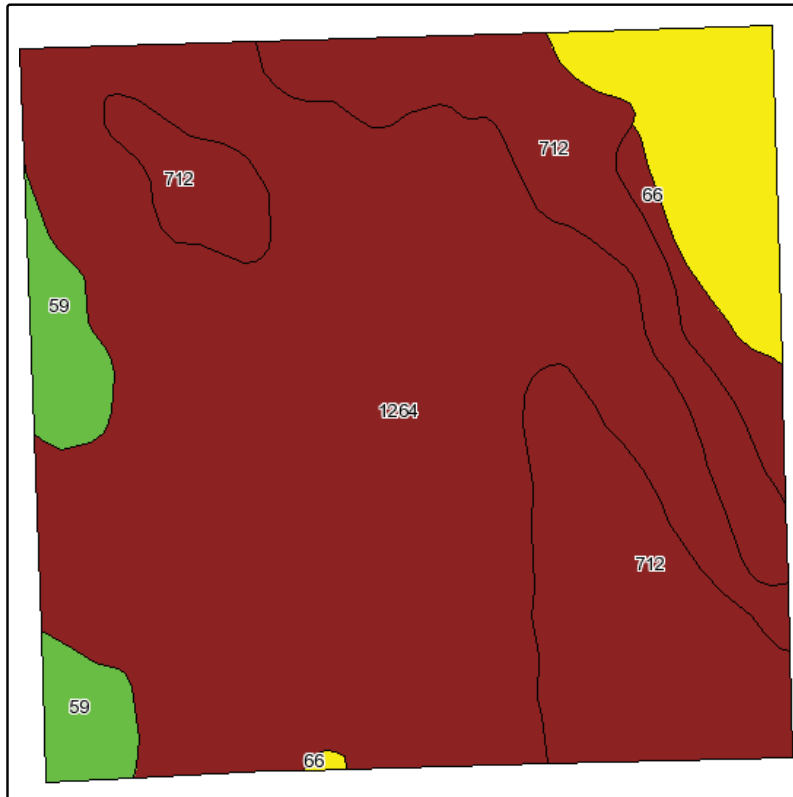
4265 45th Street South - Suite 200
Fargo, North Dakota 58104
www.propertyresourcesgroup.com

FOR SALE: MARSHALL COUNTY, MN FARM LAND

SE 1/4 Section 11-157-47

Approximately 160.00 Acres Near Warren, MN

Soils Map



State: **Minnesota**
 County: **Marshall**
 Location: **011-157N-047W**
 Township: **Wanger**
 Acres: **161.5**



Fsa borders provided by the Farm Service Agency as of May 23, 2008.
 Soils data provided by USDA and NRCS.

| Code | Soil Description | Acres | Percent of field | Non-Irr Class Legend | Non-Irr Class | Productivity Index |
|------------------|--------------------------|-------|------------------|----------------------|------------------|--------------------|
| 1264 | Ulen loamy fine sand | 102.5 | 63.5% | | III _s | 55 |
| 712 | Rosewood fine sandy loam | 39.5 | 24.5% | | III _w | 55 |
| 66 | Flaming loamy fine sand | 12 | 7.4% | | IV _s | 49 |
| 59 | Grimstad fine sandy loam | 7.5 | 4.6% | | I _{ls} | 88 |
| Weighted Average | | | | | | 56.1 |



Steve Johnson
 Realtor
 701-799-5213
steve@prglandsales.com



4265 45th Street South - Suite 200
 Fargo, North Dakota 58104
www.propertyresourcesgroup.com

FOR SALE: MARSHALL COUNTY, MN FARM LAND

SE 1/4 Section 12-157-47 Less South 660'
Approximately 119.79 Acres Near Warren, MN



- ♦ DRAIN TILED LAND
- ♦ Total Acres: 119.79
- ♦ Tillable Acres: 121.2
- ♦ 2011 Gross R.E. Taxes & Specials: \$446.00
- ♦ Weighted Average Productivity: 52.6%



Steve Johnson
Realtor
701-799-5213
steve@prglandsales.com



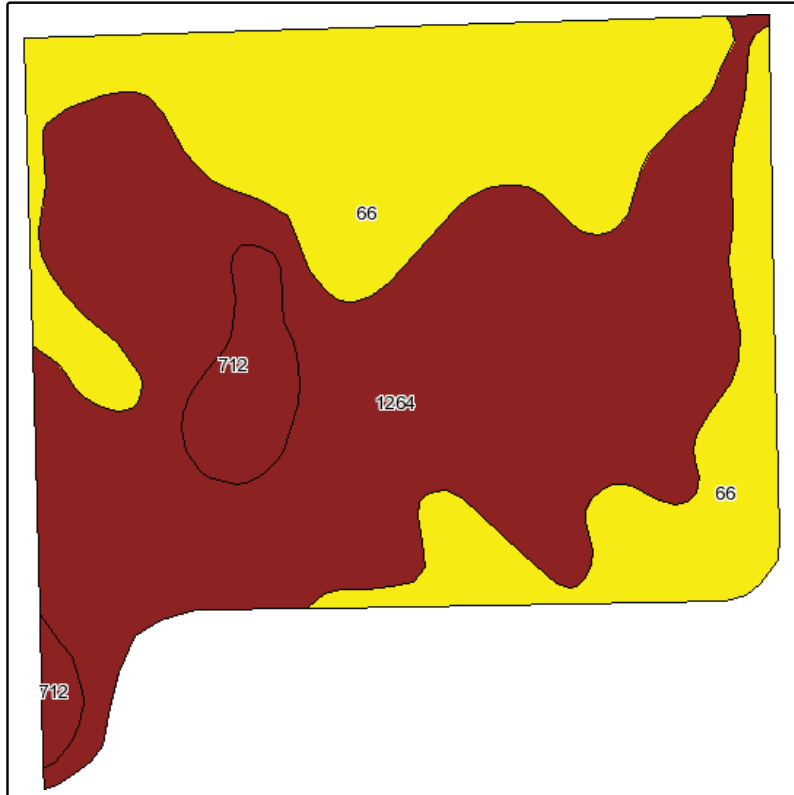
4265 45th Street South - Suite 200
Fargo, North Dakota 58104
www.propertyresourcesgroup.com

FOR SALE: MARSHALL COUNTY, MN FARM LAND

SE 1/4 Section 12-157-47 Less South 660'

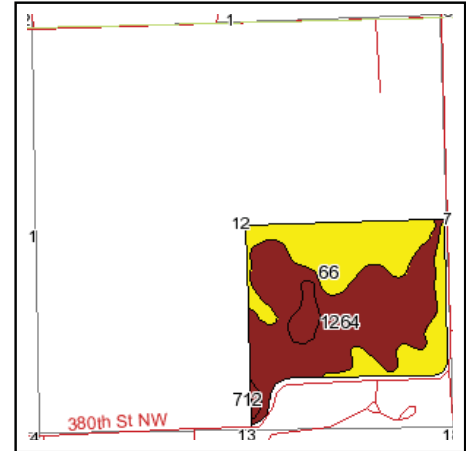
Approximately 119.79 Acres Near Warren, MN

Soils Map

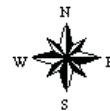


Fsa borders provided by the Farm Service Agency as of May 23, 2008.
Soils data provided by USDA and NRCS.

| Code | Soil Description | Acres | Percent of field | Non-Irr Class Legend | Non-Irr Class | Productivity Index |
|------------------|--------------------------|-------|------------------|----------------------|-------------------|--------------------|
| 1264 | Ulen loamy fine sand | 67.4 | 55.7% | | III _s | 55 |
| 66 | Flaming loamy fine sand | 47.8 | 39.4% | | IV _s | 49 |
| 712 | Rosewood fine sandy loam | 6 | 4.9% | | III _{lw} | 55 |
| Weighted Average | | | | | | 52.6 |



State: **Minnesota**
County: **Marshall**
Location: **012-157N-047W**
Township: **Wanger**
Acres: **121.2**



Steve Johnson
Realtor
701-799-5213
steve@prglandsales.com



4265 45th Street South - Suite 200
Fargo, North Dakota 58104
www.propertyresourcesgroup.com

FOR SALE: MARSHALL COUNTY, MN FARM LAND

SW 1/4, W 1/2 SE 1/4, W 1/2 NE 1/4 Section 23-157-47
Approximately 323.6 Acres Near Warren, MN



- ♦ Total Acres: 323.6
- ♦ Tillable Acres: 321.50
- ♦ 2011 Gross R.E. Taxes & Specials: \$2,284.⁰⁰
- ♦ Weighted Average Productivity: 62.8%



Steve Johnson
Realtor
701-799-5213
steve@prglandsales.com



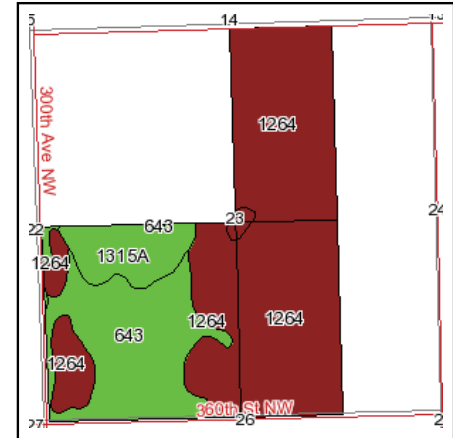
4265 45th Street South - Suite 200
Fargo, North Dakota 58104
www.propertyresourcesgroup.com

FOR SALE: MARSHALL COUNTY, MN FARM LAND

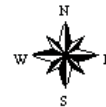
SW 1/4, W 1/2 SE 1/4, W 1/2 NE 1/4 Section 23-157-47

Approximately 323.6 Acres Near Warren, MN

Soils Map



State: **Minnesota**
 County: **Marshall**
 Location: **023-157N-047W**
 Township: **Wanger**
 Acres: **321.6**



Fsa borders provided by the Farm Service Agency as of May 23, 2008.
 Soils data provided by USDA and NRCS.

| Code | Soil Description | Acres | Percent of field | Non-Irr Class Legend | Non-Irr Class | Productivity Index |
|------------------|--|-------|------------------|----------------------|---------------|--------------------|
| 1264 | Ulen loamy fine sand | 214.6 | 66.7% | | Ills | 55 |
| 643 | Huot fine sandy loam | 76.1 | 23.7% | | Ils | 75 |
| 1315A | Wheatville very fine sandy loam, 0 to 2 percent slopes | 26.9 | 8.4% | | Ils | 89 |
| 712 | Rosewood fine sandy loam | 2.3 | 0.7% | | Illw | 55 |
| 59 | Grimstad fine sandy loam | 1.7 | 0.5% | | Ils | 88 |
| Weighted Average | | | | | | 62.8 |



Steve Johnson
 Realtor
 701-799-5213
steve@prglandsales.com



4265 45th Street South - Suite 200
 Fargo, North Dakota 58104
www.propertyresourcesgroup.com

FOR SALE: MARSHALL COUNTY, MN FARM LAND

SW 1/4 Section 25-157-47

Approximately 160.00 Acres Near Warren, MN



- ♦ Total Acres: 160.00
- ♦ Tillable Acres: 157.35
- ♦ 2011 Gross R.E. Taxes & Specials: \$600.⁰⁰
- ♦ Weighted Average Productivity: 85.1%



Steve Johnson
Realtor
701-799-5213
steve@prglandsales.com



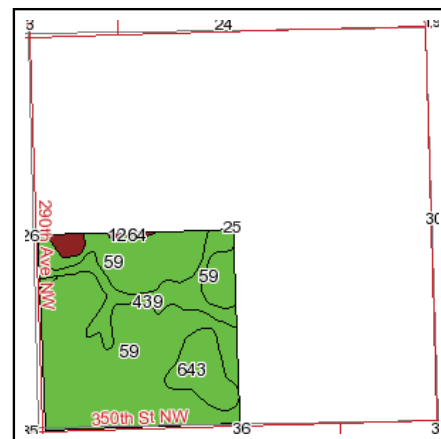
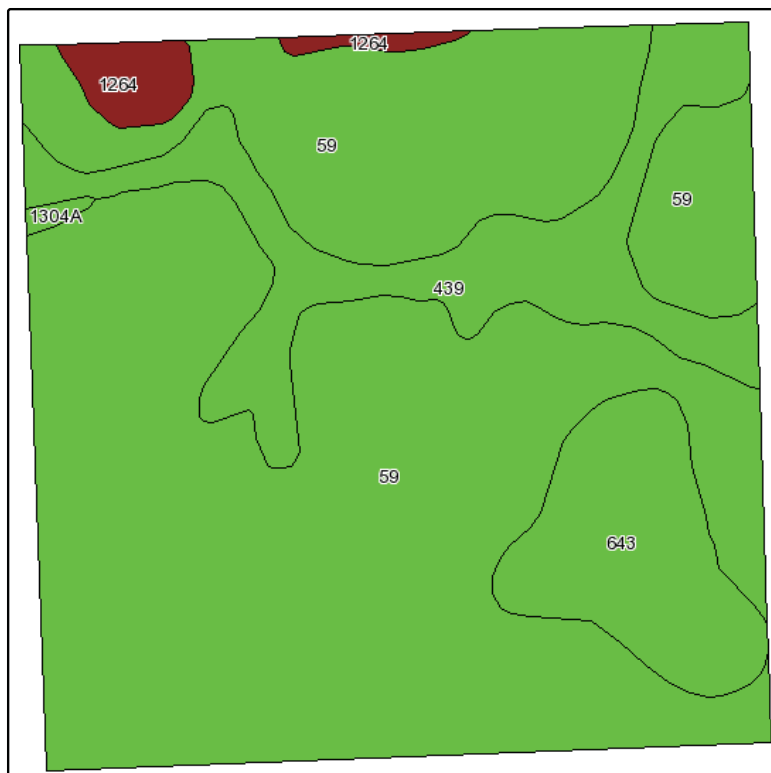
4265 45th Street South - Suite 200
Fargo, North Dakota 58104
www.propertyresourcesgroup.com

FOR SALE: MARSHALL COUNTY, MN FARM LAND

SW 1/4 Section 25-157-47

Approximately 160.00 Acres Near Warren, MN

Soils Map



State: **Minnesota**
 County: **Marshall**
 Location: **025-157N-047W**
 Township: **Wanger**
 Acres: **157.4**



Fsa borders provided by the Farm Service Agency as of May 23, 2008.
 Soils data provided by USDA and NRCS.

| Code | Soil Description | Acres | Percent of field | Non-Irr Class Legend | Non-Irr Class | Productivity Index |
|------------------|---|-------|------------------|----------------------|---------------|--------------------|
| 59 | Grimstad fine sandy loam | 118.8 | 75.5% | | Ils | 88 |
| 439 | Strathcona fine sandy loam | 20.4 | 12.9% | | IIw | 80 |
| 643 | Huot fine sandy loam | 14.3 | 9.1% | | Ils | 75 |
| 1264 | Ulen loamy fine sand | 3.5 | 2.2% | | IIIs | 55 |
| 1304A | Glyndon very fine sandy loam, 0 to 2 percent slopes | 0.4 | 0.3% | | Ils | 89 |
| Weighted Average | | | | | | 85.1 |



Steve Johnson
 Realtor
 701-799-5213
steve@prglandsales.com



4265 45th Street South - Suite 200
 Fargo, North Dakota 58104
www.propertyresourcesgroup.com

FOR SALE: MARSHALL COUNTY, MN FARM LAND

NE 1/4, SE 1/4 Section 27-157-47

Approximately 320.00 Acres Near Warren, MN



- ♦ Total Acres: 320.00
- ♦ Tillable Acres: 314.56
- ♦ 2011 Gross R.E. Taxes & Specials: \$2,582.⁰⁰
- ♦ Weighted Average Productivity: 79.6%



Steve Johnson
Realtor
701-799-5213
steve@prglandsales.com



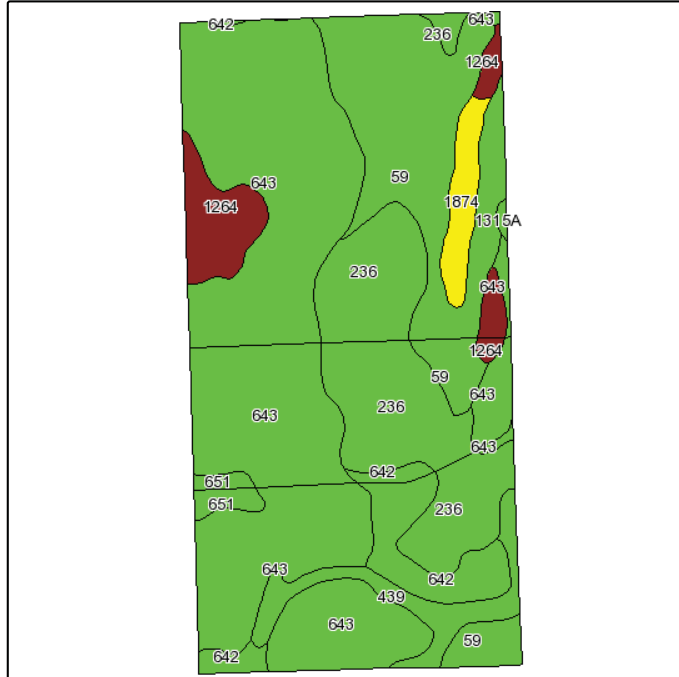
4265 45th Street South - Suite 200
Fargo, North Dakota 58104
www.propertyresourcesgroup.com

FOR SALE: MARSHALL COUNTY, MN FARM LAND

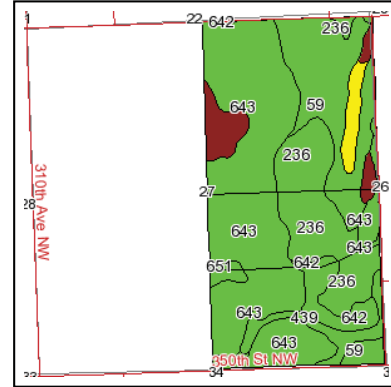
NE 1/4, SE 1/4 Section 27-157-47

Approximately 320.00 Acres Near Warren, MN

Soils Map



Fsa borders provided by the Farm Service Agency as of May 23, 2008.
Soils data provided by USDA and NRCS.



State: **Minnesota**
County: **Marshall**
Location: **027-157N-047W**
Township: **Wanger**
Acres: **314.6**



| Code | Soil Description | Acres | Percent of field | Non-Irr Class Legend | Non-Irr Class | Productivity Index |
|-------------------------|--|-------|------------------|----------------------|---------------|--------------------|
| 643 | Huot fine sandy loam | 143.4 | 45.6% | | Ils | 75 |
| 59 | Grimstad fine sandy loam | 59.2 | 18.8% | | Ils | 88 |
| 236 | Vallers loam | 54.9 | 17.5% | | Ilw | 90 |
| 642 | Clearwater loam | 17.1 | 5.4% | | Ilw | 94 |
| 1264 | Ulen loamy fine sand | 15.7 | 5.0% | | Ills | 55 |
| 439 | Strathcona fine sandy loam | 12.5 | 4.0% | | Ilw | 80 |
| 1874 | Radium loamy sand | 7.7 | 2.5% | | IVs | 39 |
| 651 | Thief river fine sandy loam | 3.6 | 1.2% | | Ilw | 74 |
| 1315A | Wheatville very fine sandy loam, 0 to 2 percent slopes | 0.5 | 0.2% | | Ils | 89 |
| Weighted Average | | | | | | 79.6 |



Steve Johnson
Realtor
701-799-5213
steve@prglandsales.com



4265 45th Street South - Suite 200
Fargo, North Dakota 58104
www.propertyresourcesgroup.com

FOR SALE: MARSHALL COUNTY, MN FARM LAND

South 1/2 Section 30-157-46

Approximately 322.35 Acres Near Warren, MN



- ♦ Total Acres: 322.35
- ♦ Tillable Acres: 316.04
- ♦ 2011 Gross R.E. Taxes & Specials: \$1,752.⁰⁰
- ♦ Weighted Average Productivity: 79.0%



Steve Johnson
Realtor
701-799-5213
steve@prglandsales.com



PROPERTY RESOURCES GROUP

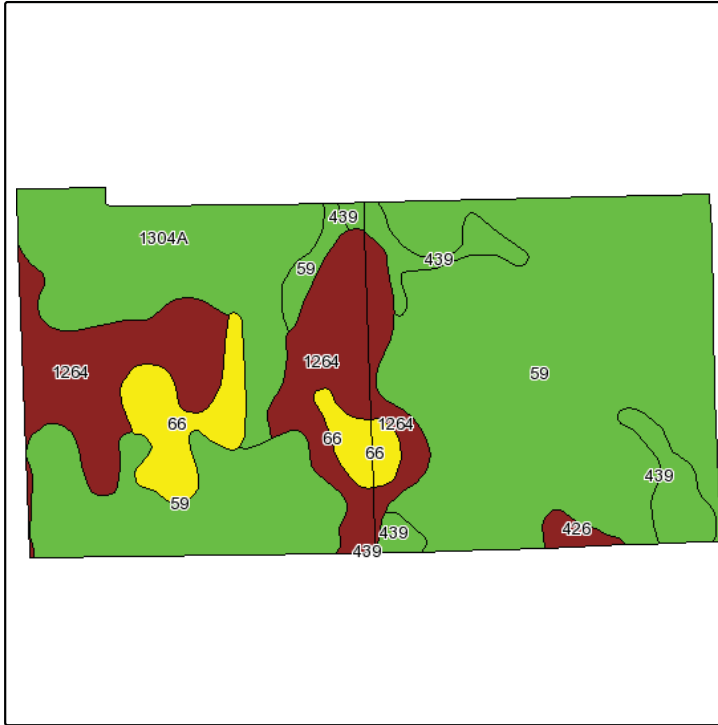
4265 45th Street South - Suite 200
Fargo, North Dakota 58104
www.propertyresourcesgroup.com

FOR SALE: MARSHALL COUNTY, MN FARM LAND

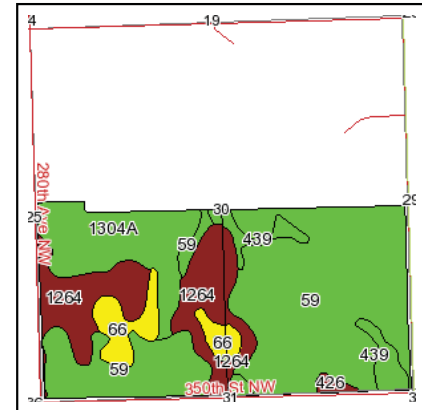
South 1/2 Section 30-157-46

Approximately 322.35 Acres Near Warren, MN

Soils Map



Fsa borders provided by the Farm Service Agency as of May 23, 2008.
Soils data provided by USDA and NRCS.



State: **Minnesota**
County: **Marshall**
Location: **030-157N-046W**
Township: **Wright**
Acres: **316**



| Code | Soil Description | Acres | Percent of field | Non-Irr Class Legend | Non-Irr Class | Productivity Index |
|------------------|---|-------|------------------|----------------------|---------------|--------------------|
| 59 | Grimstad fine sandy loam | 172.1 | 54.5% | | IIs | 88 |
| 1264 | Ulen loamy fine sand | 59 | 18.7% | | IIIs | 55 |
| 1304A | Glyndon very fine sandy loam, 0 to 2 percent slopes | 47.1 | 14.9% | | IIs | 89 |
| 66 | Flaming loamy fine sand | 19.8 | 6.3% | | IVs | 49 |
| 439 | Strathcona fine sandy loam | 15.7 | 5.0% | | IIw | 80 |
| 426 | Foldahl loamy fine sand | 2.3 | 0.7% | | IIIs | 65 |
| Weighted Average | | | | | | 79 |



Steve Johnson
Realtor
701-799-5213
steve@prglandsales.com



4265 45th Street South - Suite 200
Fargo, North Dakota 58104
www.propertyresourcesgroup.com

FOR SALE: MARSHALL COUNTY, MN FARM LAND

SE 1/4 Section 35-157-47

Approximately 160.00 Acres Near Warren, MN



- ♦ Total Acres: 160.00
- ♦ Tillable Acres: 156.84
- ♦ 2011 Gross R.E. Taxes & Specials: \$1,114.⁰⁰
- ♦ Weighted Average Productivity: 78.5%



Steve Johnson
Realtor
701-799-5213
steve@prglandsales.com



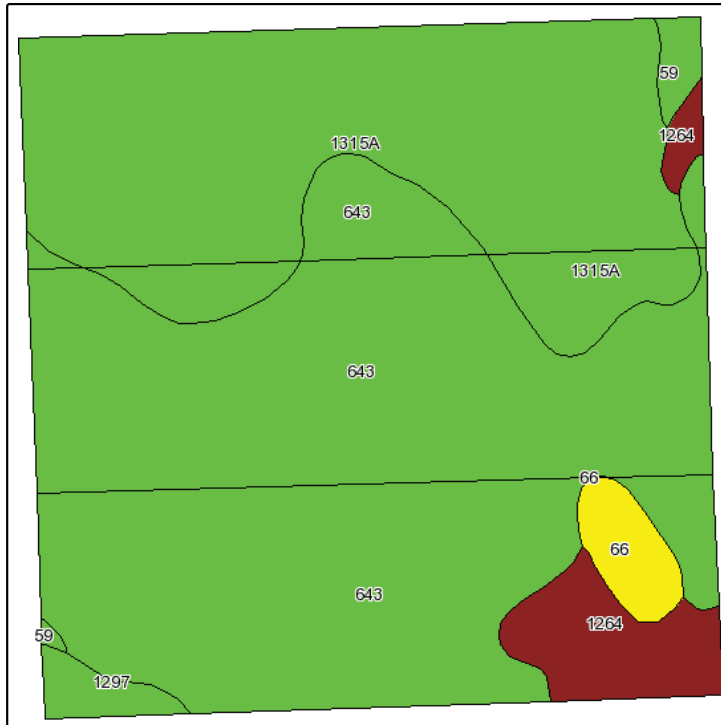
4265 45th Street South - Suite 200
Fargo, North Dakota 58104
www.propertyresourcesgroup.com

FOR SALE: MARSHALL COUNTY, MN FARM LAND

SE 1/4 Section 35-157-47

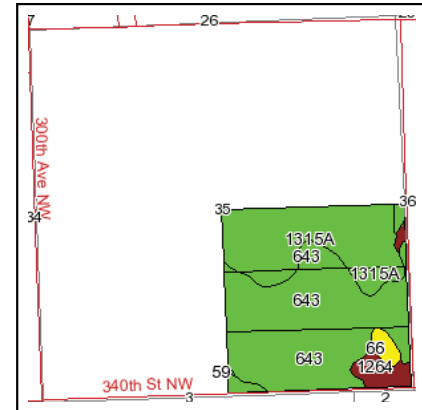
Approximately 160.00 Acres Near Warren, MN

Soils Map



Fsa borders provided by the Farm Service Agency as of May 23, 2008.
Soils data provided by USDA and NRCS.

| Code | Soil Description | Acres | Percent of field | Non-Irr Class Legend | Non-Irr Class | Productivity Index |
|------------------|--|-------|------------------|----------------------|---------------|--------------------|
| 643 | Huot fine sandy loam | 88.8 | 56.6% | | IIs | 75 |
| 1315A | Wheatville very fine sandy loam, 0 to 2 percent slopes | 53.3 | 34.0% | | IIs | 89 |
| 1264 | Ulen loamy fine sand | 8 | 5.1% | | IIIs | 55 |
| 66 | Flaming loamy fine sand | 3.3 | 2.1% | | IVs | 49 |
| 1297 | Augsburg very fine sandy loam | 2 | 1.3% | | IIw | 90 |
| 59 | Grimstad fine sandy loam | 1.4 | 0.9% | | IIs | 88 |
| Weighted Average | | | | | | 78.5 |



State: **Minnesota**
County: **Marshall**
Location: **035-157N-047W**
Township: **Wanger**
Acres: **156.8**



Steve Johnson
Realtor
701-799-5213
steve@prglandsales.com



4265 45th Street South - Suite 200
Fargo, North Dakota 58104
www.propertyresourcesgroup.com

FOR SALE: MARSHALL COUNTY, MN FARM LAND

E 1/2 NW 1/4 Section 36-157-47

Approximately 80.00 Acres Near Warren, MN



- ♦ Total Acres: 80.00
- ♦ Tillable Acres: 78.5
- ♦ 2011 Gross R.E. Taxes & Specials: \$304.⁰⁰
- ♦ Weighted Average Productivity: 86.4%



Steve Johnson
Realtor
701-799-5213
steve@prglandsales.com



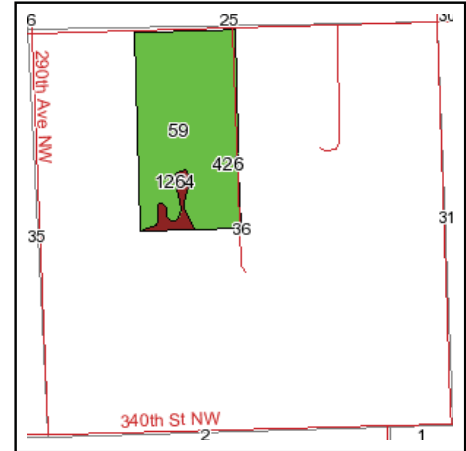
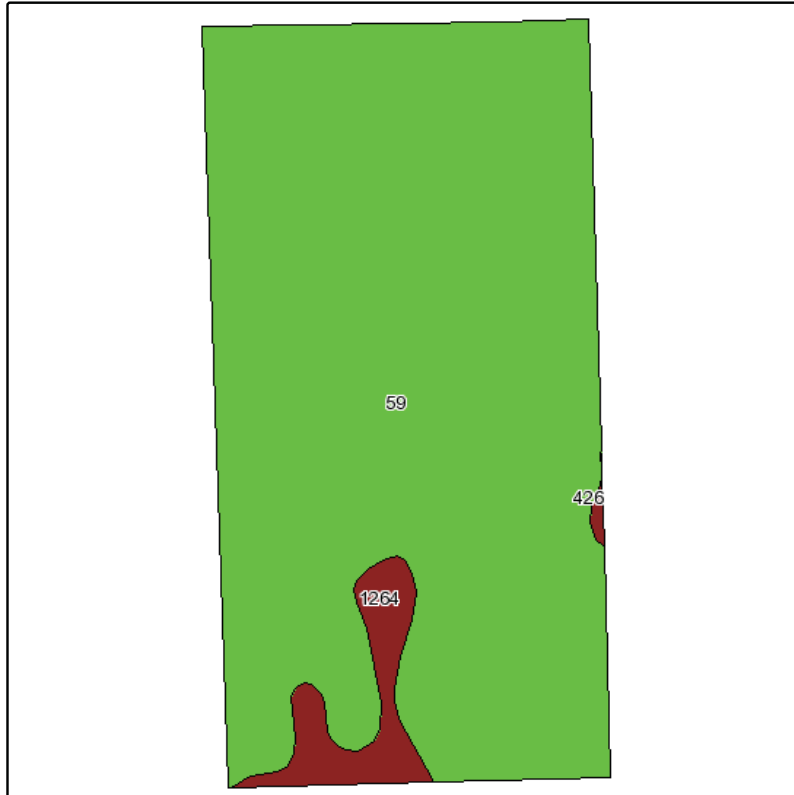
4265 45th Street South - Suite 200
Fargo, North Dakota 58104
www.propertyresourcesgroup.com

FOR SALE: MARSHALL COUNTY, MN FARM LAND

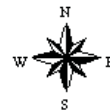
E 1/2 NW 1/4 Section 36-157-47

Approximately 80.00 Acres Near Warren, MN

Soils Map



State: **Minnesota**
 County: **Marshall**
 Location: **036-157N-047W**
 Township: **Wanger**
 Acres: **78.5**



Fsa borders provided by the Farm Service Agency as of May 23, 2008.
 Soils data provided by USDA and NRCS.

| Code | Soil Description | Acres | Percent of field | Non-Irr Class Legend | Non-Irr Class | Productivity Index |
|------------------|--------------------------|-------|------------------|----------------------|---------------|--------------------|
| 59 | Grimstad fine sandy loam | 74.6 | 95.0% | | IIs | 88 |
| 1264 | Ulen loamy fine sand | 3.8 | 4.8% | | IIIs | 55 |
| 426 | Foldahl loamy fine sand | 0.1 | 0.2% | | IIIs | 65 |
| Weighted Average | | | | | | 86.4 |



Steve Johnson
 Realtor
 701-799-5213
steve@prglandsales.com



4265 45th Street South - Suite 200
 Fargo, North Dakota 58104
www.propertyresourcesgroup.com

FOR SALE: MARSHALL COUNTY, MN FARM LAND

NE 1/4 Section 2-156-47

Approximately 165.76 Acres Near Warren, MN



- Total Acres: 165.76
- Tillable Acres: 164.3
- 2011 Gross R.E. Taxes & Specials: \$1,508.00
- Weighted Average Productivity: 82.0%



Steve Johnson
Realtor
701-799-5213
steve@prglandsales.com



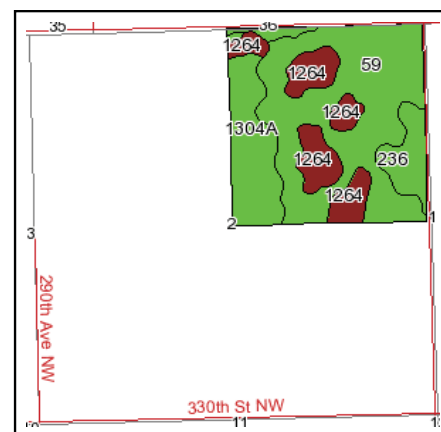
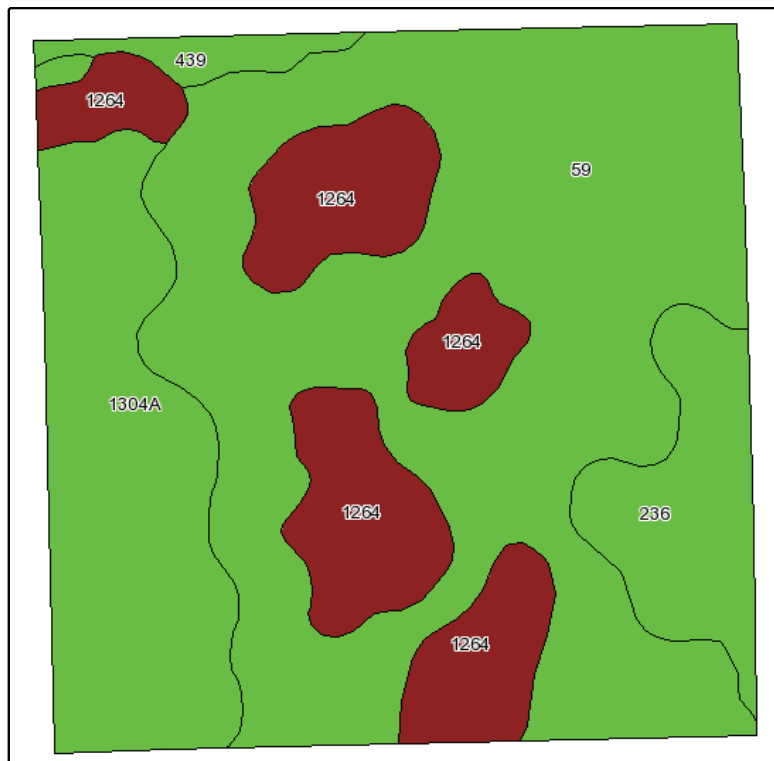
4265 45th Street South - Suite 200
Fargo, North Dakota 58104
www.propertyresourcesgroup.com

FOR SALE: MARSHALL COUNTY, MN FARM LAND

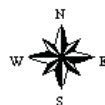
NE 1/4 Section 2-156-47

Approximately 165.76 Acres Near Warren, MN

Soils Map



State: **Minnesota**
 County: **Marshall**
 Location: **002-156N-047W**
 Township: **Alma**
 Acres: **164.3**



Fsa borders provided by the Farm Service Agency as of May 23, 2008.
 Soils data provided by USDA and NRCS.

| Code | Soil Description | Acres | Percent of field | Non-Irr Class Legend | Non-Irr Class | Productivity Index |
|------------------|---|-------|------------------|----------------------|---------------|--------------------|
| 59 | Grimstad fine sandy loam | 86.9 | 52.8% | | Ils | 88 |
| 1264 | Ulen loamy fine sand | 30.8 | 18.8% | | IIIs | 55 |
| 1304A | Glyndon very fine sandy loam, 0 to 2 percent slopes | 30.4 | 18.5% | | Ils | 89 |
| 236 | Vallers loam | 13.3 | 8.1% | | IIw | 90 |
| 439 | Strathcona fine sandy loam | 2.9 | 1.8% | | IIw | 80 |
| Weighted Average | | | | | | 82 |



Steve Johnson
 Realtor
 701-799-5213
steve@prglandsales.com



4265 45th Street South - Suite 200
 Fargo, North Dakota 58104
www.propertyresourcesgroup.com