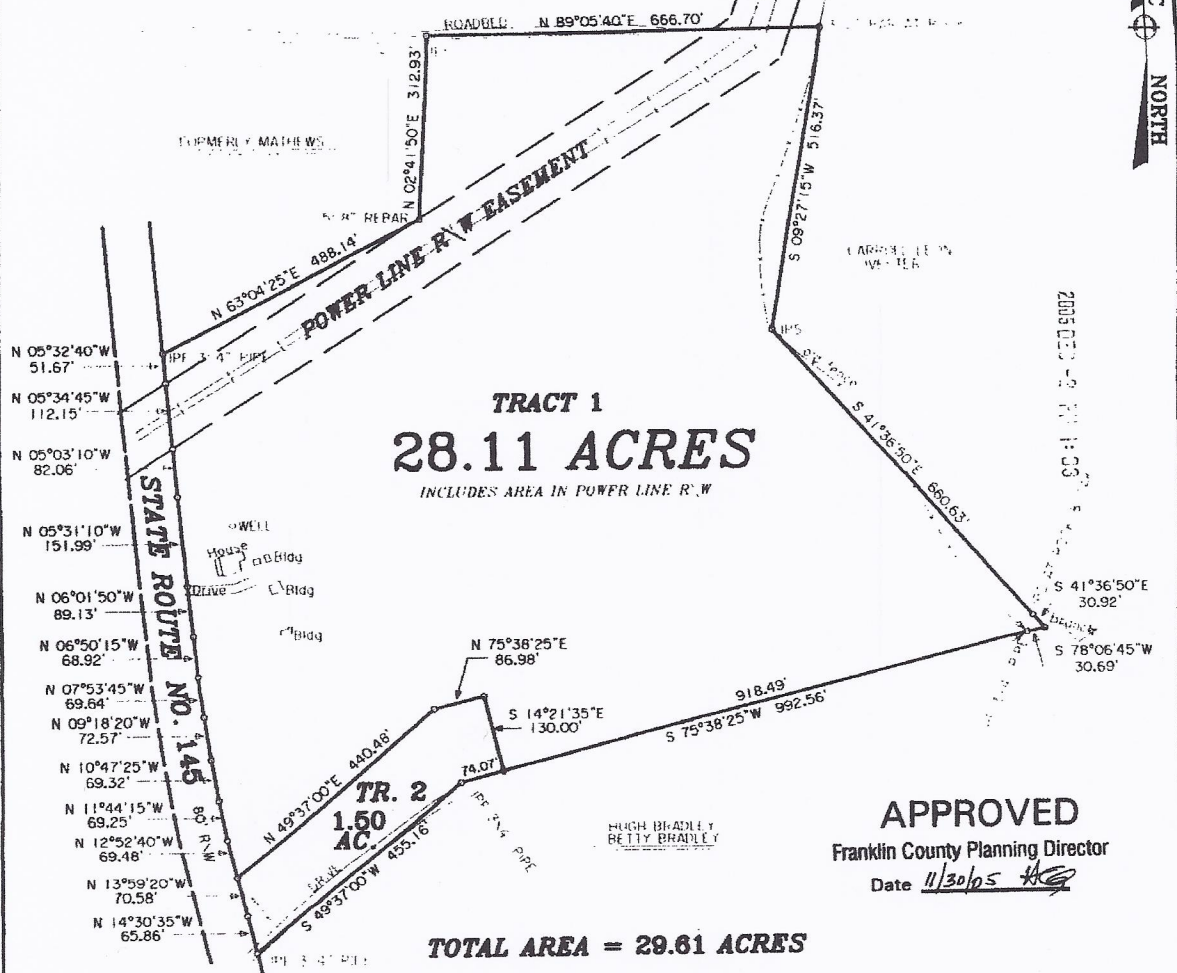


MAGNETIC NORTH



**APPROVED**  
 Franklin County Planning Director  
 Date 11/30/05

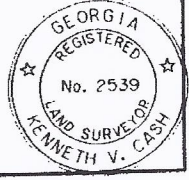
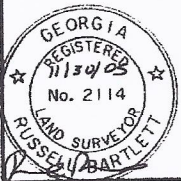
SURVEY FOR:  
**STANLEY RICHEY**  
**ROBIN RICHEY**

COUNTY: FRANKLIN, GEORGIA  
 GMD: 212  
 DATE: 07-FEB.-2003; MAPPED: 11-FRB.-2003  
 SCALE: 1" = 200'; REVISED: 30-NOV.-2005  
 FB: 266:276  
 JOB: HUGHB;HUGHBM  
 FILE: BRADLEY

SURVEYED BY:  
 BARTLETT & CASH LAND SURVEYORS, INC  
 RUSSELL N. BARTLETT - KENNETH V. CASH  
 RLS NO. 2114 PLS NO. 2539  
 ROUTE 2, BOX 11, GA. HWY. 17  
 MARTIN, GA 30057  
 (706) 779-5047

THIS SURVEY MADE WITH A TOPCON TOTAL STATION.  
 THE FIELD DATA UPON WHICH THIS PLAT IS BASED HAS  
 A CLOSURE PRECISION OF ONE FOOT IN 33352 FEET,  
 AND AN ANGULAR ERROR OF 0"00.05" PER ANGLE POINT.  
 AND WAS ADJUSTED USING THE COMPASS RULE.  
 THIS PLAT HAS BEEN CALCULATED FOR CLOSURE AND IS  
 FOUND TO BE ACCURATE WITHIN ONE FOOT IN 342185 FEET.

IPS = IRON PIN SET  
 CS#4 = STEEL PIPE  
 IPF = IRON PIN FOUND  
 O.S. = OFF SET  
 C.L. = CENTER LINE  
 CM = CONCRETE MONUMENT  
 R/W = RIGHT OF WAY



29.61 ac.