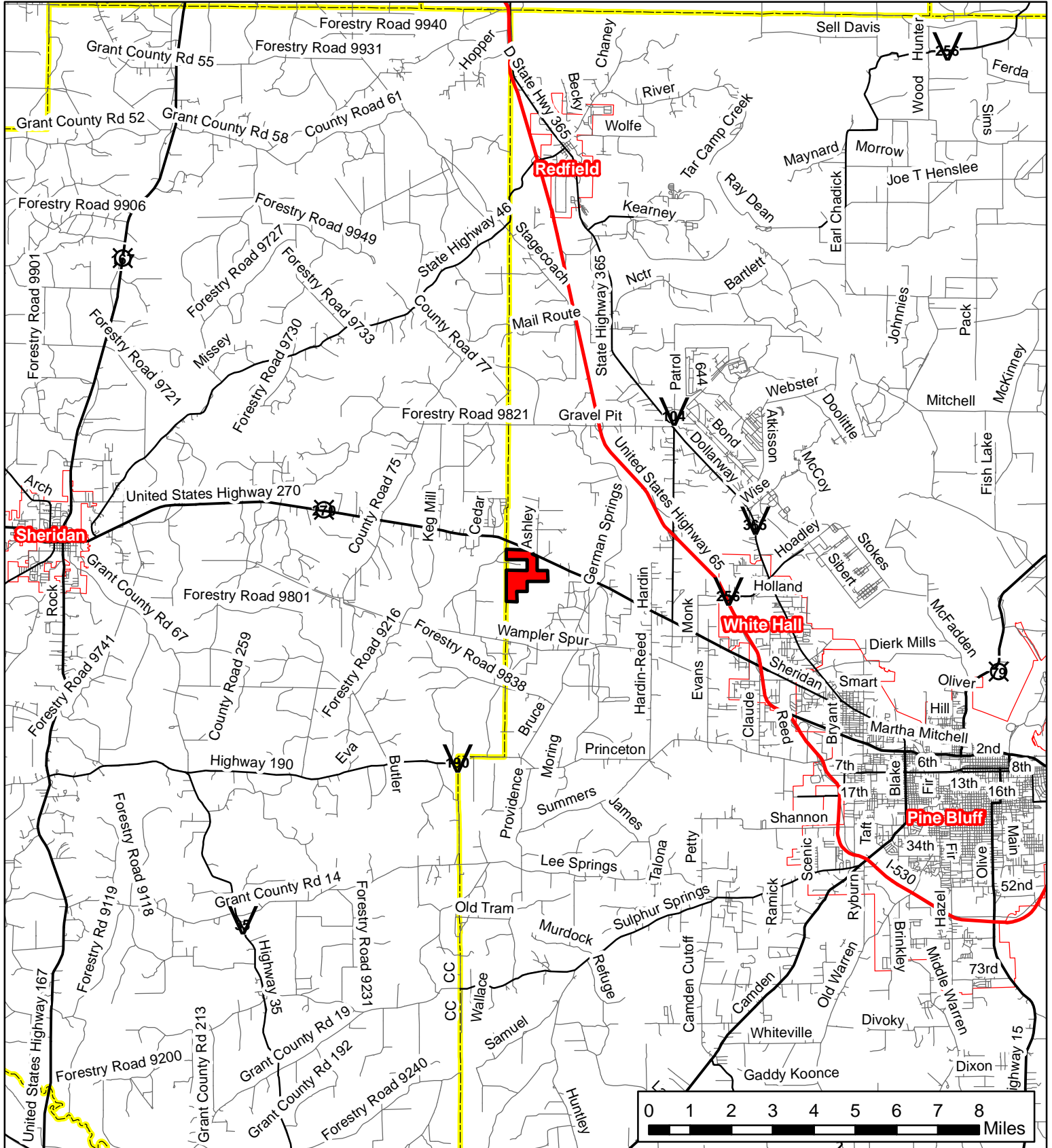


Highway 270 Whitehall

N ½ NW ¼, W ½ NW ¼ NE ¼, SW ¼ NE ¼, N ½ SE ¼, SW ¼, Section 9, NW ¼ NW ¼, Section 16,
Township 5 South, Range 11 West, Jefferson County, AR, 432 Acres, more or less



Phone: 1-888-695-8733

www.forestryrealestate.com



FORESTRY & REAL ESTATE CONSULTANTS PLLC

This map and all information it contains is provided "AS IS," as a courtesy to potential buyers. Potential buyers should make their own determination regarding the accuracy of the information provided. Neither the seller, Davis DuBose Forestry & Real Estate Consultants PLLC (DDFREC), their subsidiaries, affiliates nor representatives warrant the accuracy, adequacy or completeness of any information contained herein regarding the property, its condition, boundaries, access, acreage, or timber stand information. DDFREC expressly disclaims liability for errors or omissions.