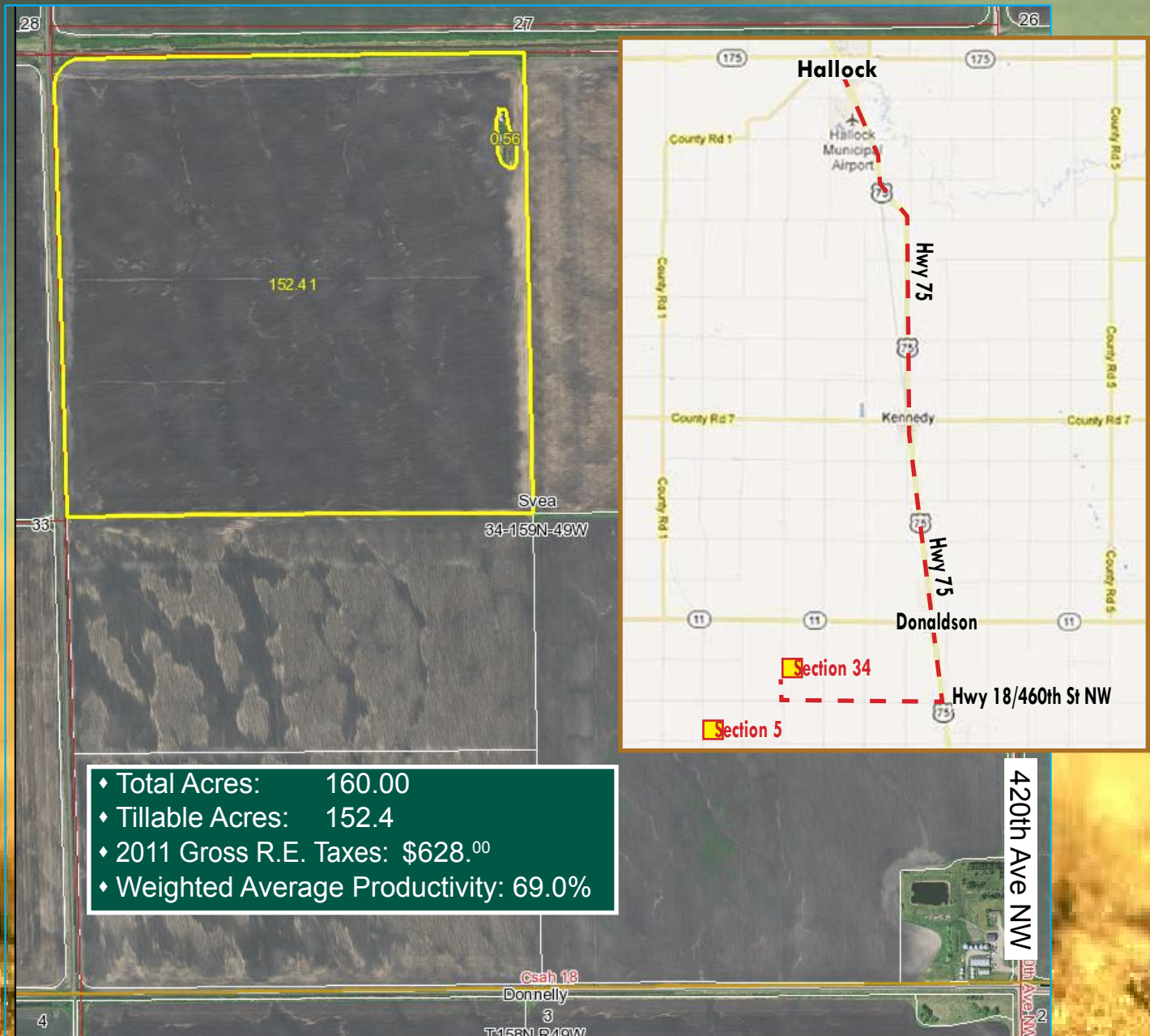


# FOR SALE: KITTSON COUNTY, MN FARM LAND

NW 1/4 Section 34-159-49 • Approximately 160.00 Acres Near Hallock, MN



## Driving Directions:

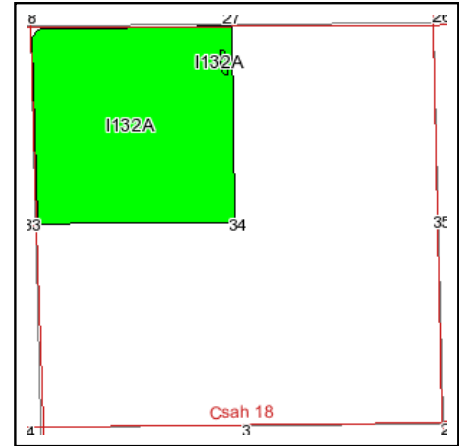
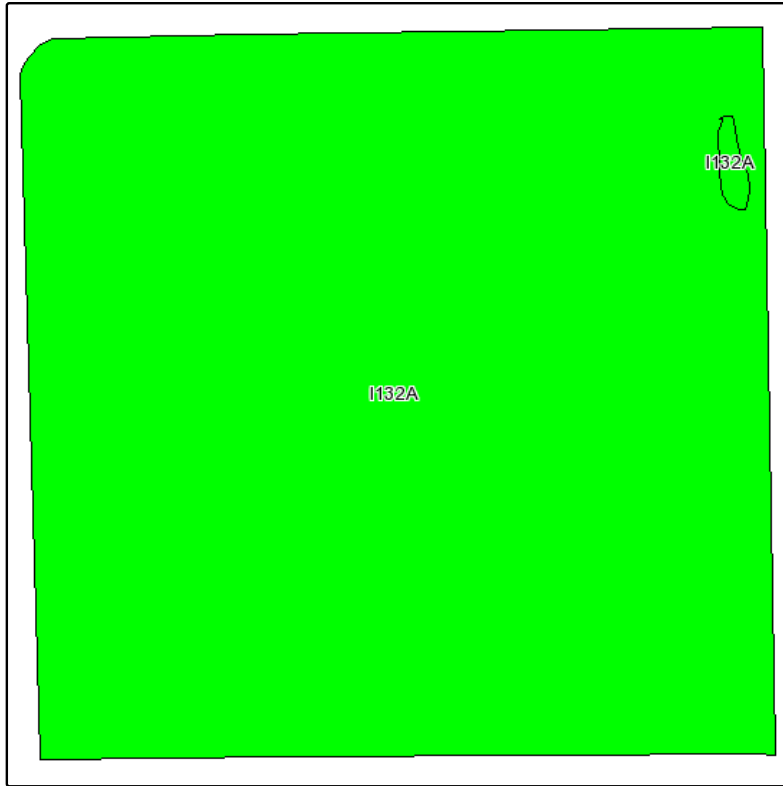
- ♦ From Hallock, MN take Hwy 75 14 miles South to Donaldson, MN.
- ♦ From Donaldson go 2 miles South on Hwy 75.
- ♦ Go 4 miles West on Hwy 18/460th St NW.
- ♦ Go North 1/2 mile.
- ♦ You are now at the SW corner of the property in Section 34.



# FOR SALE: KITTSON COUNTY, MN FARM LAND

NW 1/4 Section 34-159-49 • Approximately 160.00 Acres Near Hallock, MN

**Soils Map**



State: **Minnesota**  
 County: **Kittson**  
 Location: **034-159N-049W**  
 Township: **Svea**  
 Acres: **153**

Fsa borders provided by the Farm Service Agency as of May 23, 2008.  
 Soils data provided by USDA and NRCS.



Code	Soil Description	Acres	Percent of field	Non-Irr Class Legend	Non-Irr Class	Productivity Index	Corn	Soybeans
I132A	Northcote-Eaglepoint clays, 0 to 2 percent slopes	153	100.0%		IIw	69	73	28
<b>Weighted Average</b>						<b>69</b>	<b>73</b>	<b>28</b>



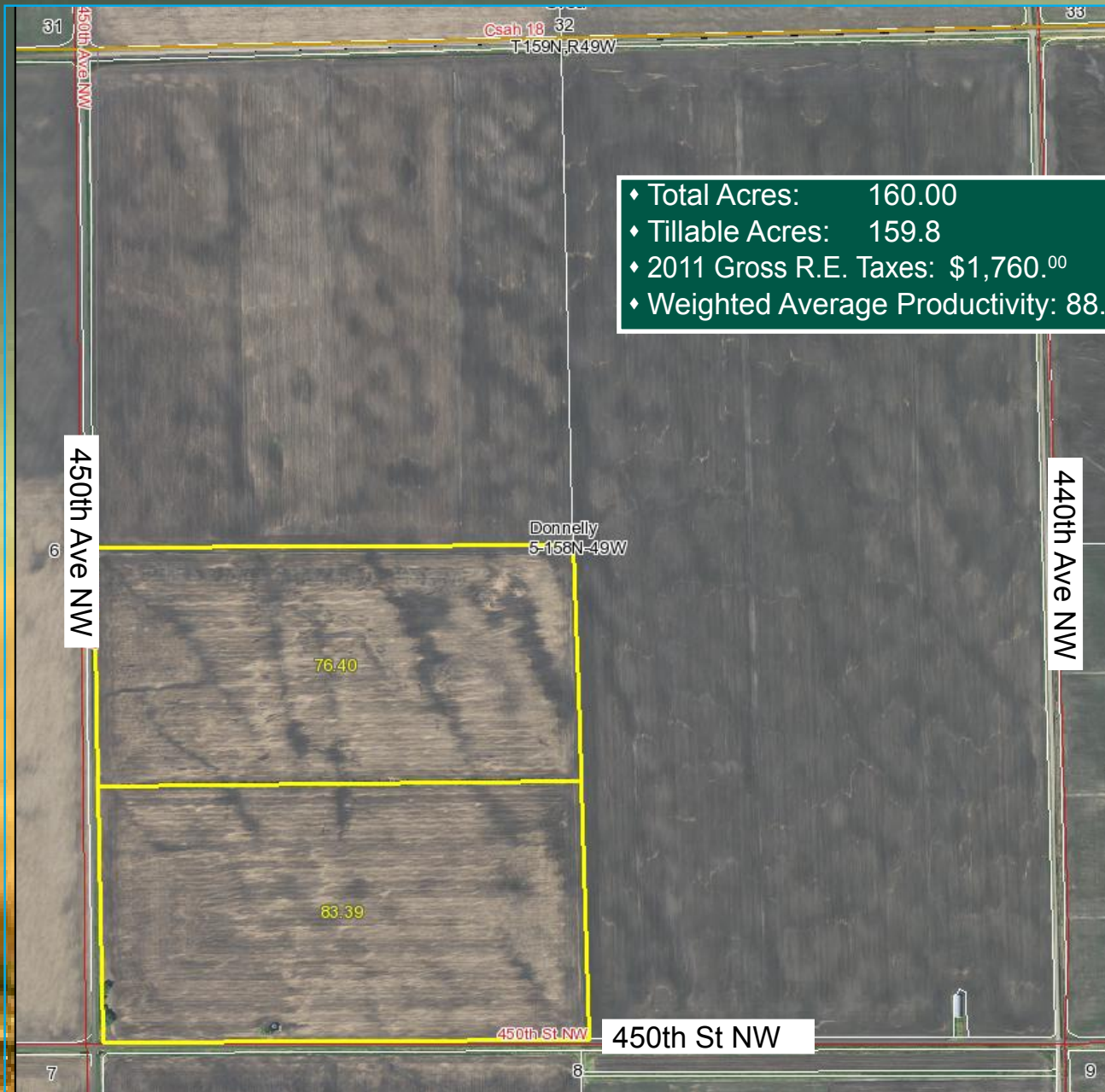
Steve Johnson  
 Farm Land Sales Realtor  
 701-799-5213  
[steve@prglandsales.com](mailto:steve@prglandsales.com)



4265 45th Street South - Suite 200  
 Fargo, North Dakota 58104  
[www.propertyresourcesgroup.com](http://www.propertyresourcesgroup.com)

# FOR SALE: MARSHALL COUNTY, MN FARM LAND

SW 1/4 Section 5-158-49 • Approximately 160.00 Acres Near Hallock, MN



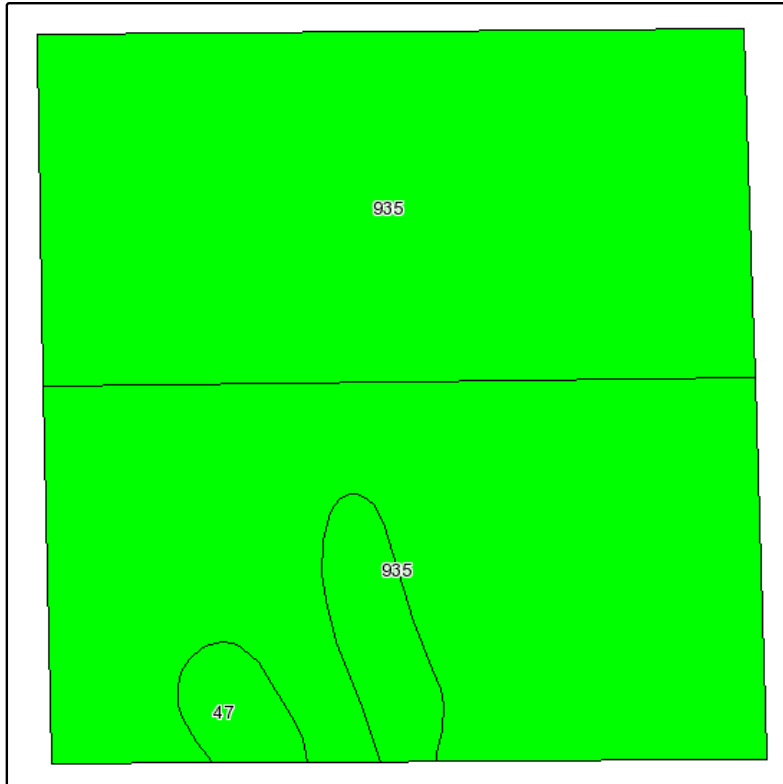
- ♦ Total Acres: 160.00
- ♦ Tillable Acres: 159.8
- ♦ 2011 Gross R.E. Taxes: \$1,760.00
- ♦ Weighted Average Productivity: 88.1%



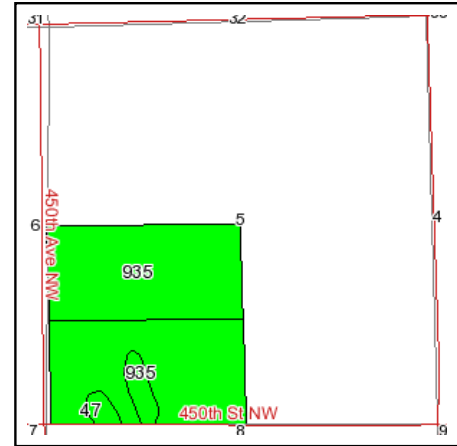
# FOR SALE: MARSHALL COUNTY, MN FARM LAND

SW 1/4 Section 5-158-49 • Approximately 160.00 Acres Near Hallock, MN

**Soils Map**



Fsa borders provided by the Farm Service Agency as of May 23, 2008.  
Soils data provided by USDA and NRCS.



State: **Minnesota**  
County: **Marshall**  
Location: **005-158N-049W**  
Township: **Donnelly**  
Acres: **159.8**



Code	Soil Description	Acres	Percent of field	Non-Irr Class Legend	Non-Irr Class	Productivity Index	Alfalfa hay	Barley	Corn	Flax	Kentucky bluegrass	Oats	Red clover hay	Soybeans
935	Hegne-Fargo complex	150.4	94.1%		IIw	88	3.6	75	101		4.5	95		35
47	Colvin silty clay loam	9.4	5.9%		IIw	89	4	90	102	12		110	3.5	36
<b>Weighted Average</b>						<b>88.1</b>	<b>3.6</b>	<b>75.9</b>	<b>101.1</b>	<b>0.7</b>	<b>4.2</b>	<b>95.9</b>	<b>0.2</b>	<b>35.1</b>



Steve Johnson  
Farm Land Sales Realtor  
701-799-5213  
steve@prglandsales.com



4265 45th Street South - Suite 200  
Fargo, North Dakota 58104  
www.propertyresourcesgroup.com