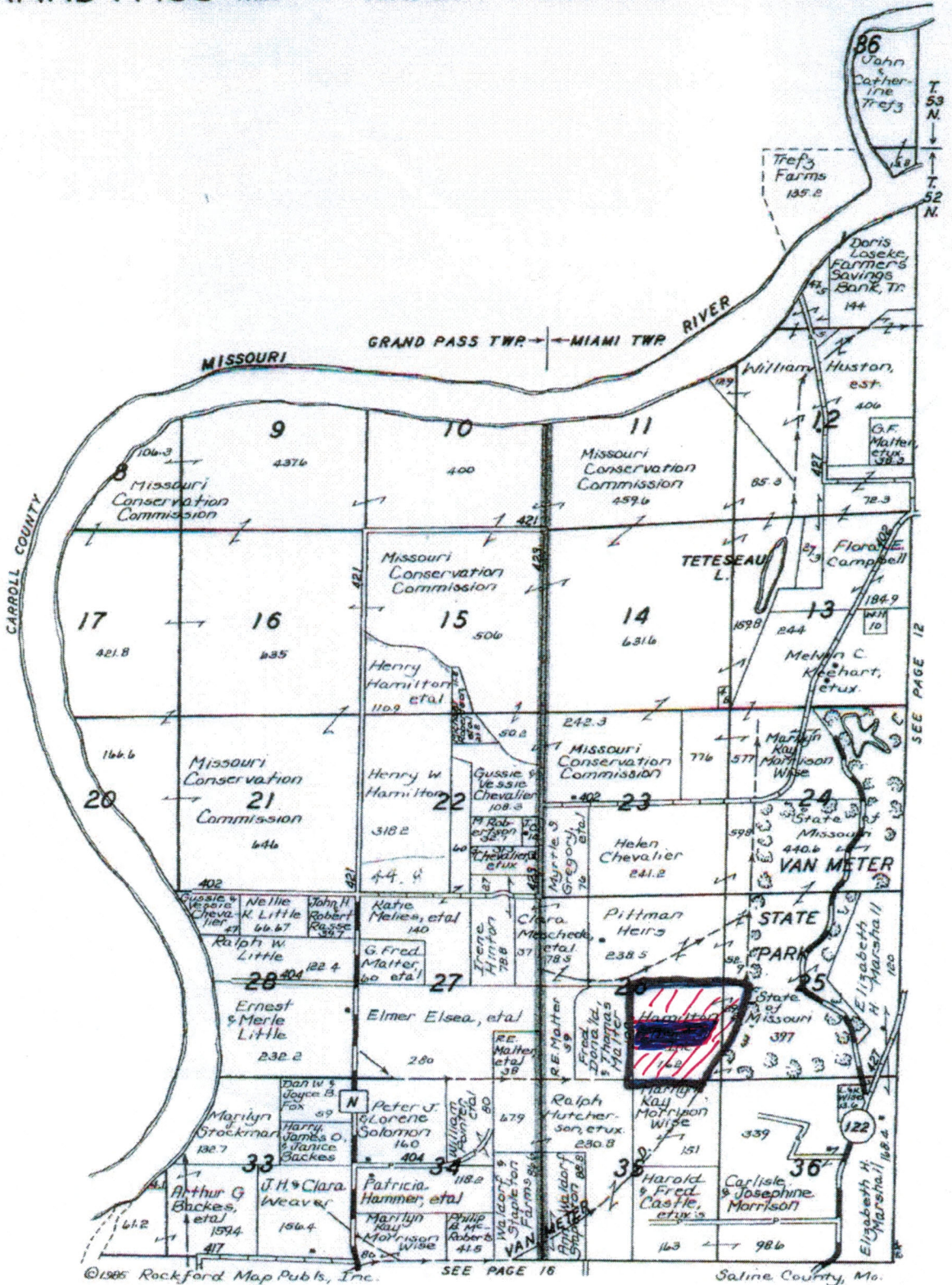
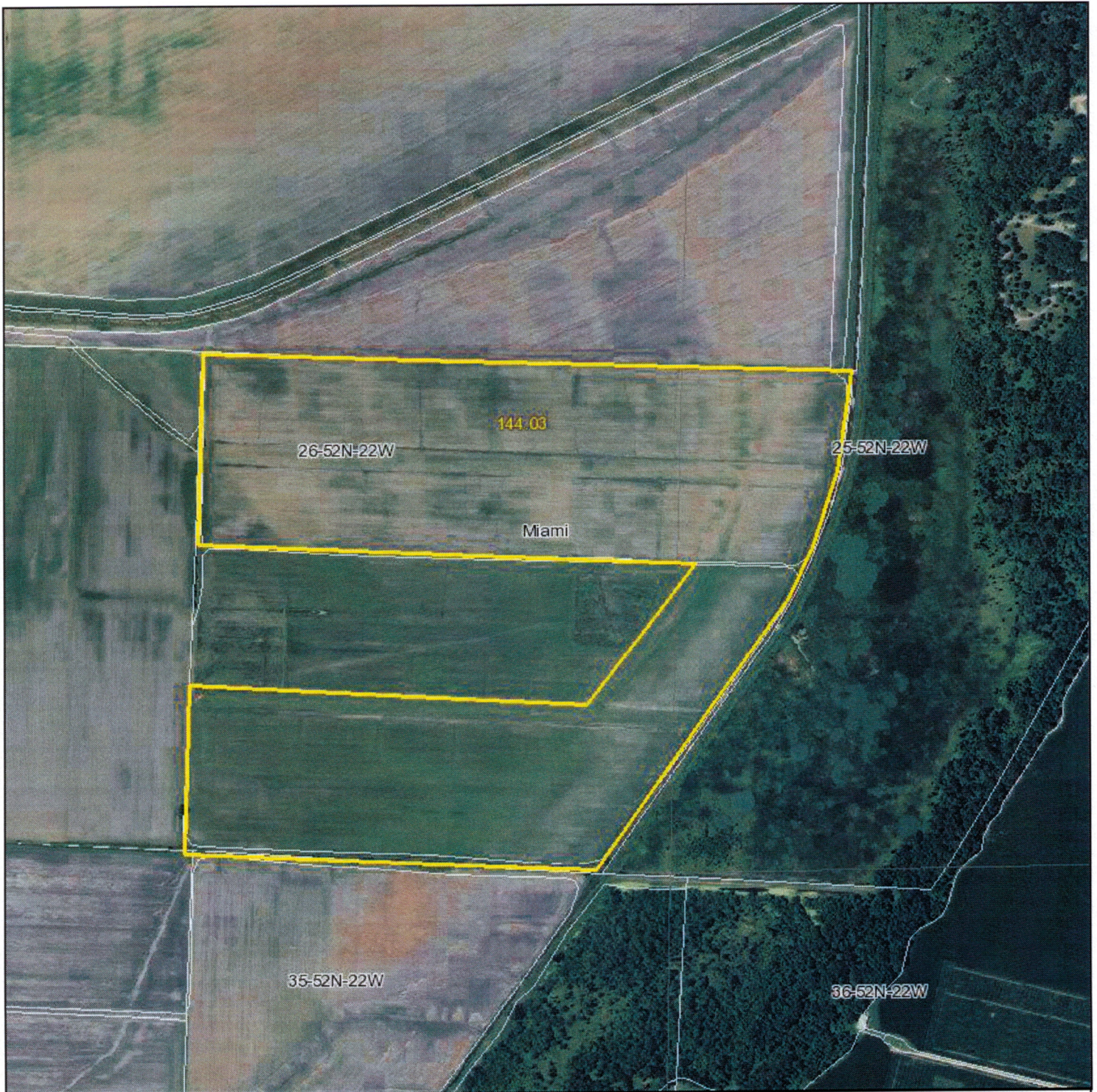


subject





Aerial Map



map center: 39° 15' 34.52, 93° 16' 43.88

scale: 10167

26-52N-22W
Saline County
Missouri



3/12/2011



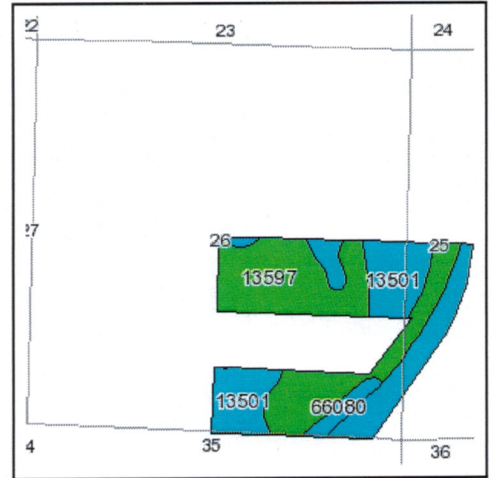
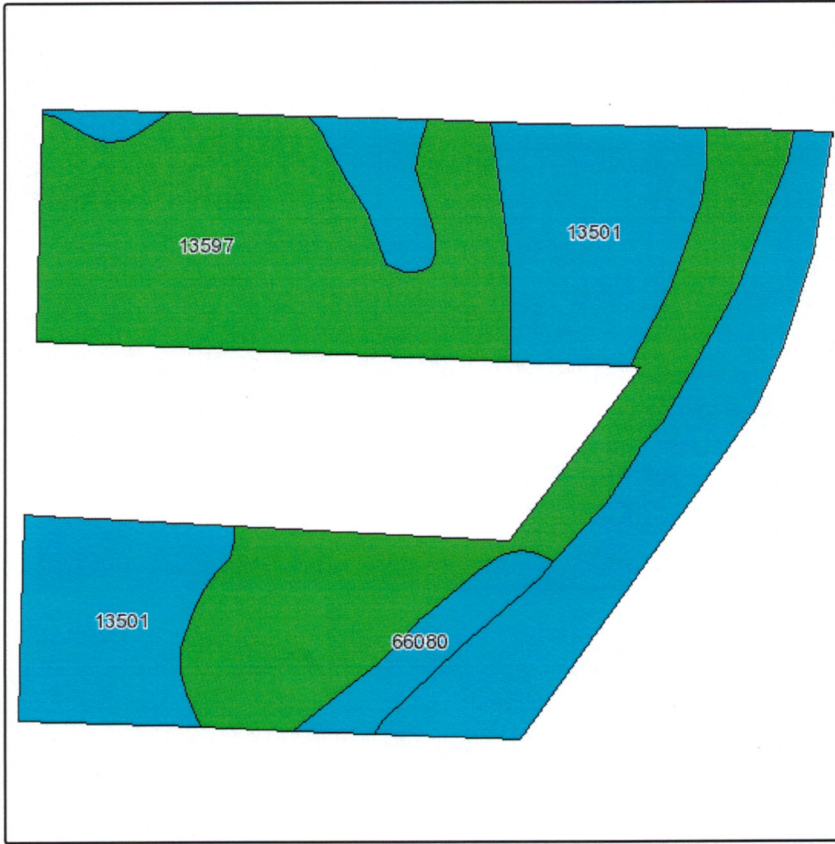
Maps provided by:



©AgriData, Inc. 2011
www.AgriDataInc.com

Field borders provided by Farm Service Agency as of 5/21/2008. Aerial photography provided by Aerial Photography Field Office.

Soils Map



State: **Missouri**
 County: **Saline**
 Location: **026-052N-022W**
 Township: **Miami**
 Acres: **144**
 Date: **3/12/2011**



Maps provided by:



©AgriData, Inc 2008
www.AgriDataInc.com

Fsa borders provided by the Farm Service Agency as of May 23, 2008.
Soils data provided by USDA and NRCS.

Code	Soil Description	Acres	Percent of field	Non-Irr Class Legend	Non-Irr Class	Tall fescue	Common bermudagrass	Orchardgrass red clover	Warm season grasses
13597	Booker clay, frequently ponded, 0 to 2 percent slopes, occasionally flooded	74	51.4%		Vw	8	8	7	9
13501	Aholt clay, 0 to 2 percent slopes, occasionally flooded	64.4	44.7%		IIIw	8	8	7	9
66080	Darwin silty clay, 0 to 2 percent slopes, rarely flooded	5.6	3.9%		IIIw	8	8	7	9
Weighted Average						8	8	7	9