

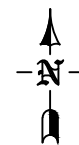


NOTE: ALL INFORMATION IS FROM SOURCES DEEMED RELIABLE, BUT IS NOT GUARANTEED BY BILL BAHNY AND ASSOCIATES, SELLER OR AGENT. OFFERING IS SUBJECT TO ERROR, OMISSIONS, PRIOR SALE, CHANGE OR WITHDRAWAL WITHOUT NOTICE, AND APPROVAL OF THE PURCHASE BY OWNER. WE URGE INDEPENDENT VERIFICATION OF EACH AND EVERY ITEM SUBMITTED, TO THE SATISFACTION OF ANY PROSPECTIVE PURCHASER.

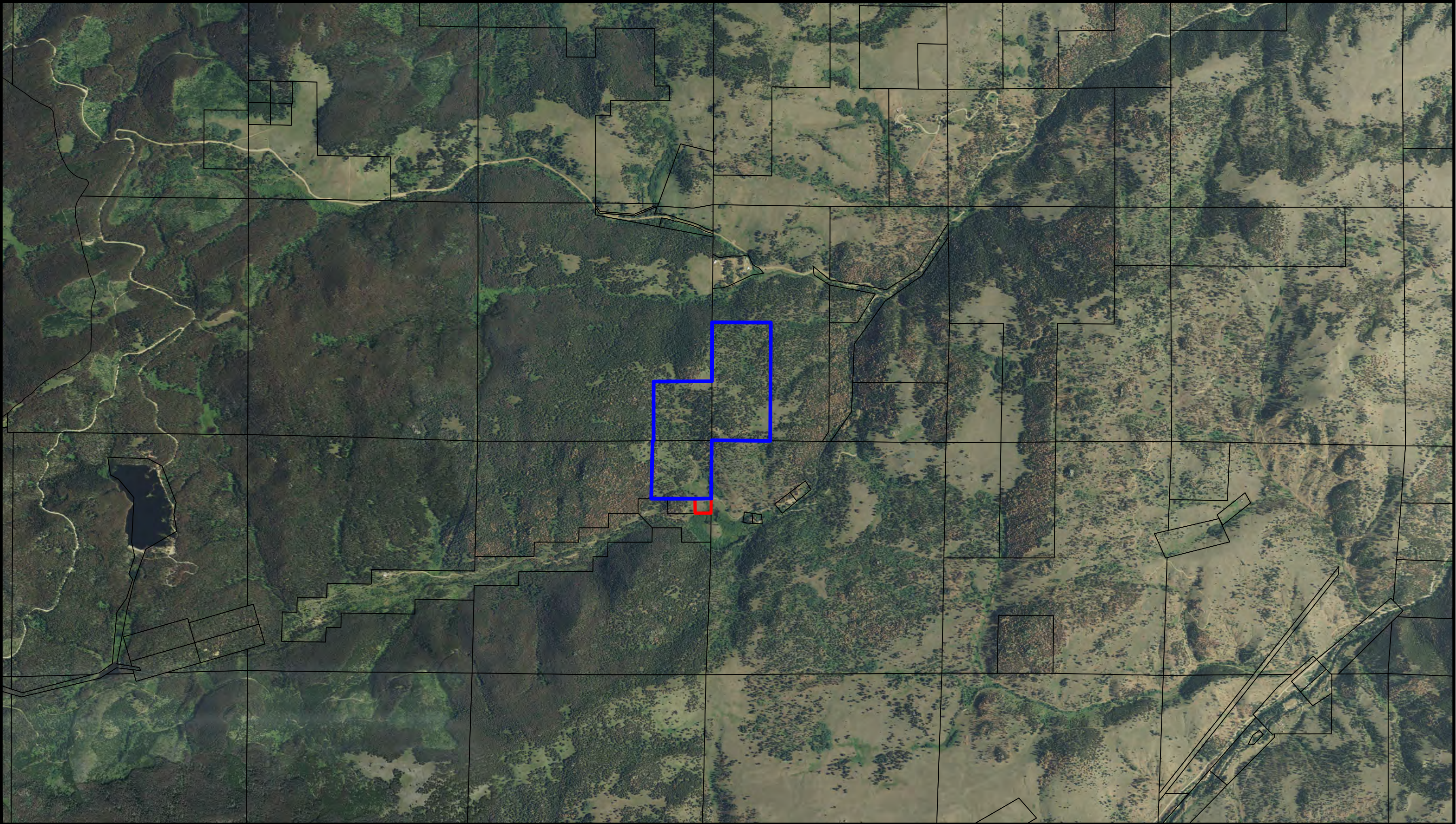
 Deeded property
 Leased property





**Bill Bahny
& Associates**
Real Estate

SCALE: 1:24,000
DATE: AUGUST 2011
DRAWN BY: DC / WESTECH
CHECKED BY: BB
FILE: BAHNY1103.DWG

DANDRO RANCH
JEFFERSON COUNTY, MONTANA



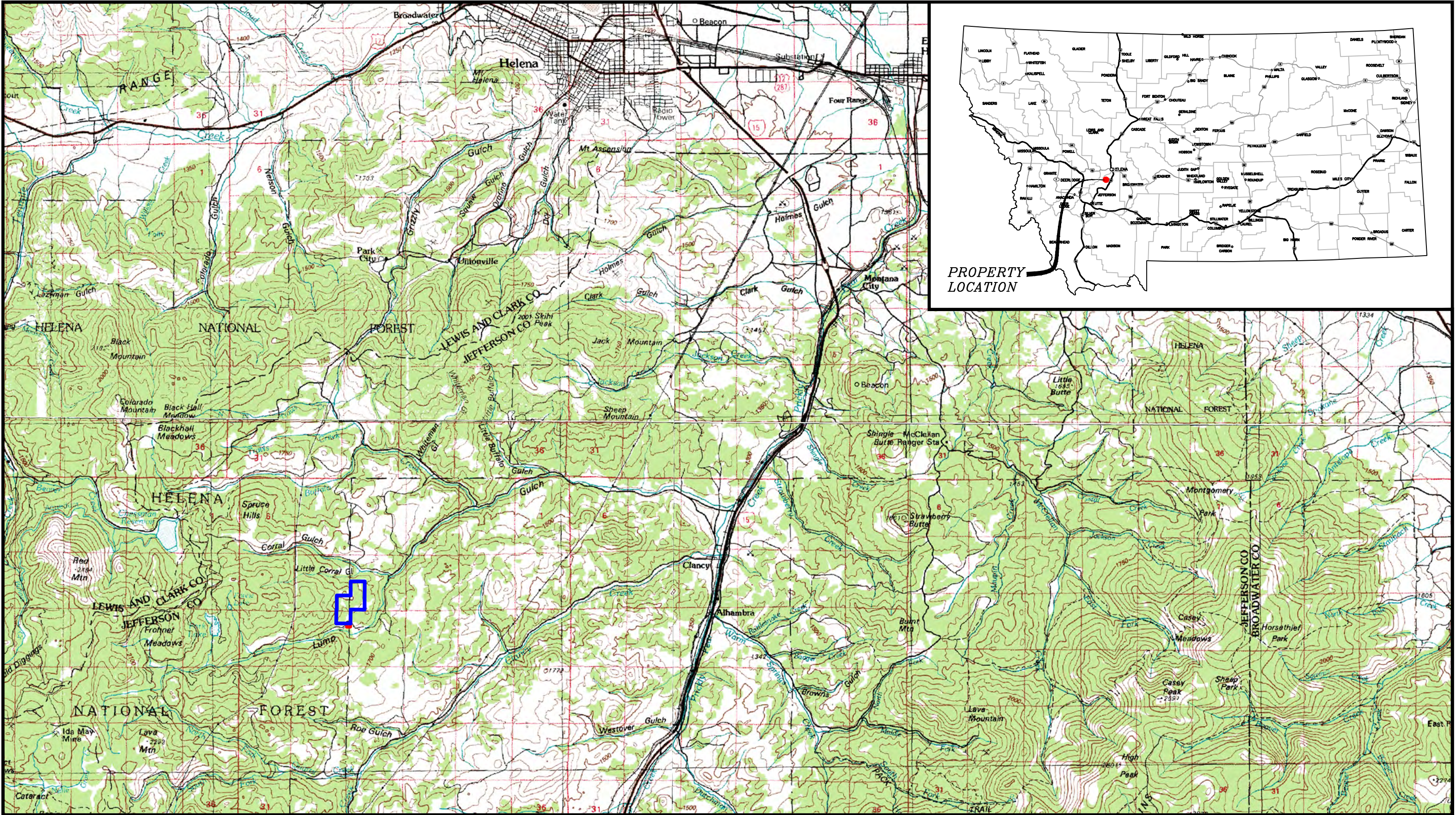
NOTE: ALL INFORMATION IS FROM SOURCES DEEMED RELIABLE, BUT IS NOT GUARANTEED BY BILL BAHNY AND ASSOCIATES, SELLER OR AGENT. OFFERING IS SUBJECT TO ERROR, OMISSIONS, PRIOR SALE, CHANGE OR WITHDRAWAL WITHOUT NOTICE, AND APPROVAL OF THE PURCHASE BY OWNER. WE URGE INDEPENDENT VERIFICATION OF EACH AND EVERY ITEM SUBMITTED, TO THE SATISFACTION OF ANY PROSPECTIVE PURCHASER.

 Deeded property
 Leased property





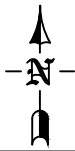
SCALE: 1:24,000
DATE: AUGUST 2011
DRAWN BY: DC / WESTECH
CHECKED BY: BB
FILE: BAHNY1103.DWG

DANDRO RANCH
JEFFERSON COUNTY, MONTANA



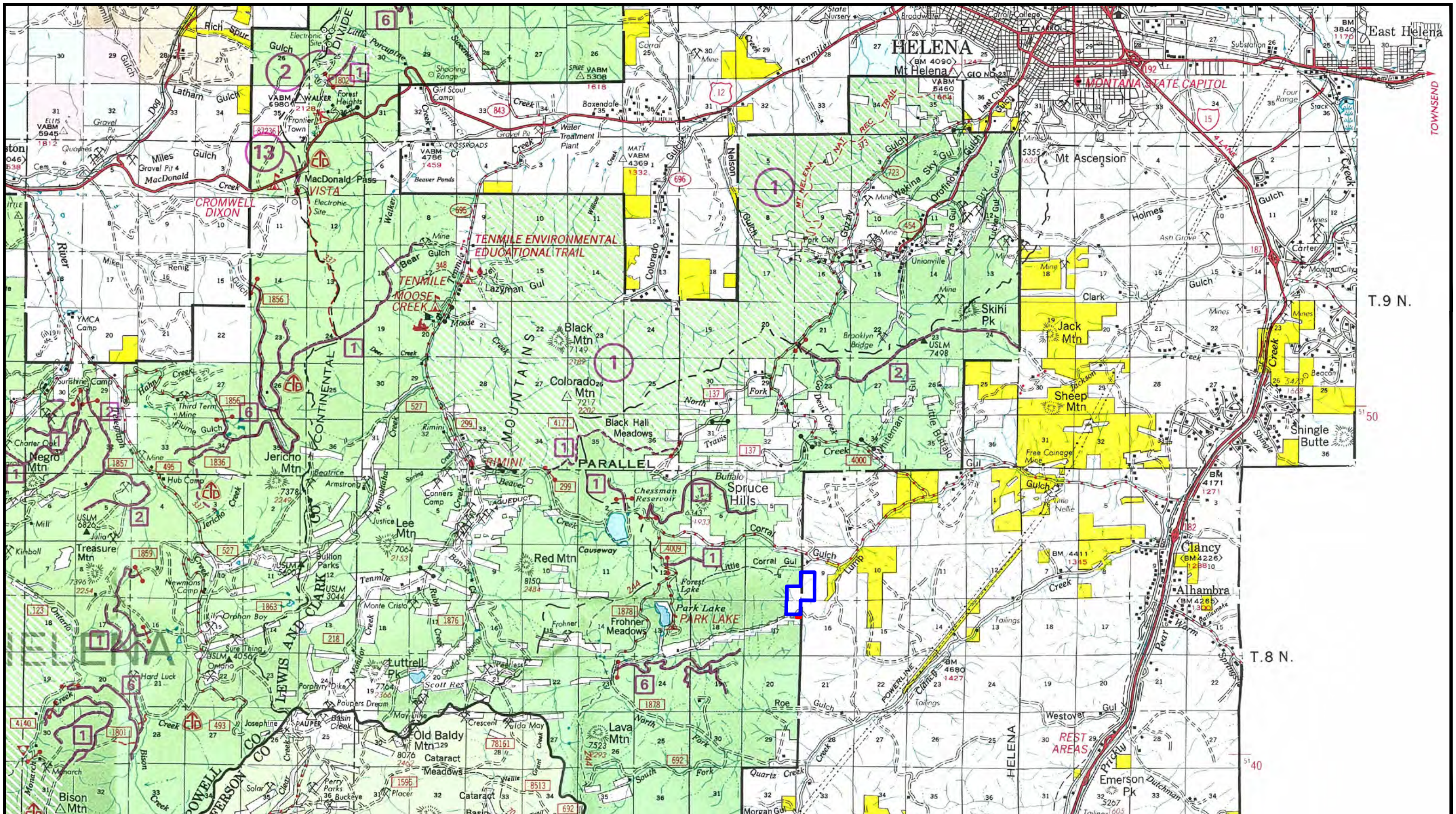
NOTE: ALL INFORMATION IS FROM SOURCES DEEMED RELIABLE, BUT IS NOT GUARANTEED BY BILL BAHNY AND ASSOCIATES, SELLER OR AGENT. OFFERING IS SUBJECT TO ERROR, OMISSIONS, PRIOR SALE, CHANGE OR WITHDRAWAL WITHOUT NOTICE, AND APPROVAL OF THE PURCHASE BY OWNER. WE URGE INDEPENDENT VERIFICATION OF EACH AND EVERY ITEM SUBMITTED, TO THE SATISFACTION OF ANY PROSPECTIVE PURCHASER.

 Deeded property
 Leased property





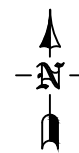
SCALE: 1:100,000
DATE: AUGUST 2011
DRAWN BY: DC / WESTECH
CHECKED BY: BB
FILE: BAHNY1103.DWG

DANDRO RANCH
JEFFERSON COUNTY, MONTANA



NOTE: ALL INFORMATION IS FROM SOURCES DEEMED RELIABLE, BUT IS NOT GUARANTEED BY BILL BAHNY AND ASSOCIATES, SELLER OR AGENT. OFFERING IS SUBJECT TO ERROR, OMISSIONS, PRIOR SALE, CHANGE OR WITHDRAWAL WITHOUT NOTICE, AND APPROVAL OF THE PURCHASE BY OWNER. WE URGE INDEPENDENT VERIFICATION OF EACH AND EVERY ITEM SUBMITTED, TO THE SATISFACTION OF ANY PROSPECTIVE PURCHASER.

 Deeded property
 Leased property



**Bill Bahny
& Associates**
Real Estate

SCALE: 1:100,000
DATE: AUGUST 2011
DRAWN BY: DC / WESTECH
CHECKED BY: BB
FILE: BAHNY1103.DWG

DANDRO RANCH
JEFFERSON COUNTY, MONTANA