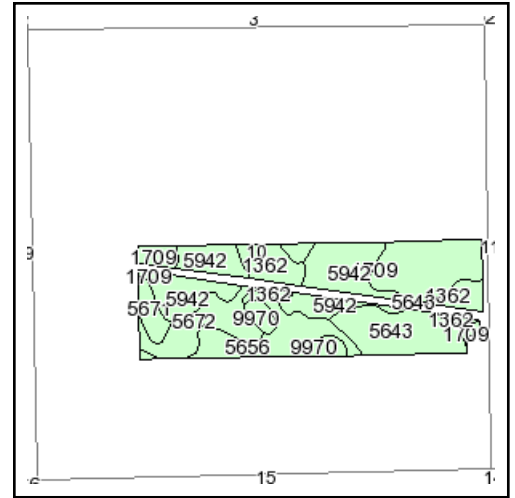
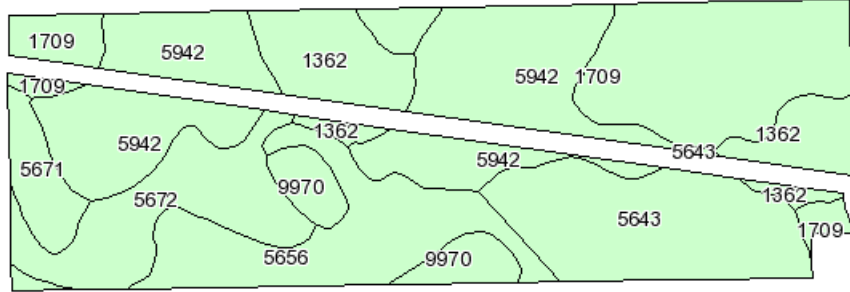


Soils Map



State: **Nebraska**
 County: **Morrill**
 Location: **010-020N-051W**
 Township: **North Camp Clarke**
 Acres: **113.8**
 Date: **9/20/2011**



KRAUPIE'S
REAL ESTATE & AUCTIONEERS
 917 Main St. PO Box 100 Bridgeport, NE 69336
 308-262-1150 www.farmauction.net



Fsa borders provided by the Farm Service Agency as of May 23, 2008.
 Soils data provided by USDA and NRCS.



Maps provided by:



©AgriData, Inc 2008
 www.AgriDataInc.com

Code	Soil Description	Acres	Percent of field	Non-Irr Class	Irr Class	SRPG	Alfalfa hay Irrigated	Corn Irrigated	Dry beans Irrigated	Sugar beets Irrigated	Winter wheat
5942	Duroc loam, 0 to 1 percent slopes	29.8	26.1%	IIIc	I	57	5.6	140	40	27	40
1709	Otero very fine sandy loam, 0 to 3 percent slopes	22.2	19.5%	IIIe	Ile	43	5	130	36	23	36
5643	Janise loam, occasionally flooded	16.3	14.3%	VIIs		14					
5656	Lisco very fine sandy loam, occasionally flooded	14.4	12.7%	VIIs		9					
5672	Yockey silt loam, alkali, occasionally flooded	11.7	10.3%	IVs	IIIIs	12	3.7	90	24	20	26
1362	Bridget very fine sandy loam, 1 to 3 percent slopes	11.3	10.0%	Ile	Ile	53	5.2	135	37	24	38
9970	Aquolls	4.4	3.9%	Vw		15					
5671	Yockey silt loam, occasionally flooded	3.7	3.2%	IIw	IIw	41	4.8	125	33	24	39
Weighted Average						34.8	3.5	88.7	24.7	16.8	25.2