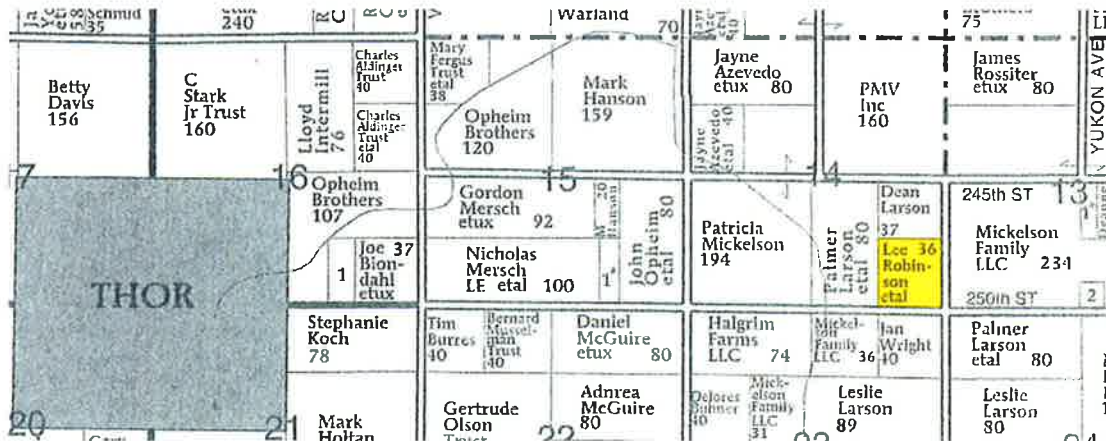




## LAND FOR SALE

### WE ARE PLEASED TO PRESENT

**32.5 Taxable Acres, m/l  
Humboldt County, Iowa**

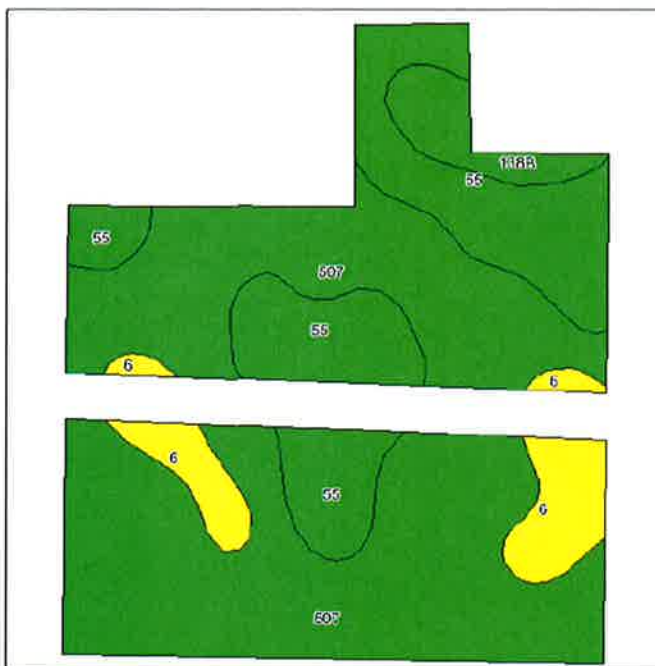


LOCATION:	From Thor: east on C48/250 <sup>th</sup> Street – Northwest corner of 250 <sup>th</sup> Street & Xenia Ave				
SELLERS:	Lee Robinson, Jennifer Schaefer, Janna Robinson				
LEGAL DESCRIPTION:	Fraction of the SE ¼ SE ¼ Section 14, Norway Township, Humboldt County				
PRICE AND TERMS:	\$278,000 10% down, balance due in cash at closing				
REAL ESTATE TAXES:	Net payable in fiscal year 2011-2012 = \$892.00				
FSA INFORMATION:	Farm Number	3369	Corn	<u>Base</u> 15.2 Acres	<u>Yields</u> 143/168 Bushels
	Cropland Acres	31.0	Soybeans	15.2 Acres	34/41 Bushels
LAND DESCRIPTION	Cropland is level to gently sloping				
SOIL TYPES:	Primary soils are Canisteo & Nicollet. See soil map on back for details CSR: 78.9 per AgriData, Inc.				
IMPROVEMENTS:	None				
DRAINAGE:	10 inch county tile on both sides of bike trail				
POSSESSION:	Negotiable – The lease is open for the 2012 crop year				
COMMENTS:	Quality soils in a strong farming community				

For additional information contact: Thomas J. Carlson: [tcarlson@hum.hfmgt.com](mailto:tcarlson@hum.hfmgt.com)  
 PO Box 503, 1101 13<sup>th</sup> St. No., Humboldt, IA 50548  
 Phone: (515) 332-1406 FAX: (515) 332-1205 Website: [www.hfmgt.com](http://www.hfmgt.com)

The information gathered for this brochure is from sources deemed reliable, but cannot be guaranteed  
 by Hertz Farm Management, Inc., or its staff.

## Soils Map



Fsa borders provided by the Farm Service Agency as of May 23, 2008.  
Soils data provided by USDA and NRCS.

State: Iowa  
County: Humboldt  
Location: 014-091N-027W  
Township: Norway  
Acres: 31  
Date: 11/23/2011



Maps provided by:



©AgriData, Inc 2006  
www.AgridataInc.com

Code	Soil Description	Acres	Percent of field	CSR Legend	Non-Irr Class	CSR	Corn	Soybeans
507	Canisteo clay loam, 0 to 2 percent slopes	19.2	62.1%		IIw	78	196	53
55	Nicollet loam, 1 to 3 percent slopes	7.9	25.5%		I	88	210	57
6	Okoboji silty clay loam, depressional, 0 to 1 percent slopes	2.6	8.3%		IIIw	57	168	45
138B	Clarion loam, 2 to 5 percent slopes	1.3	4.1%		Ile	80	199	54
Weighted Average						78.9	197.4	53.4

