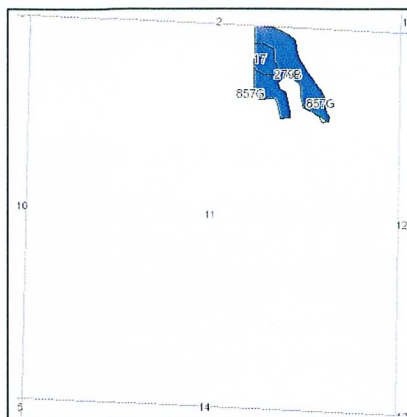
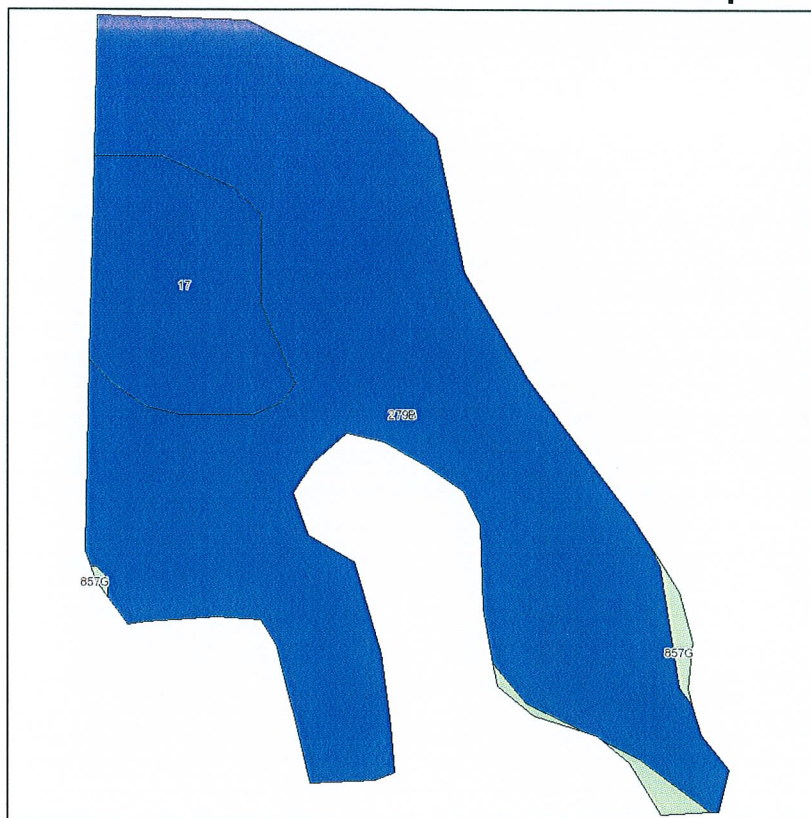


# Soils Map

I






State: **Illinois**  
 County: **Peoria**  
 Location: **011-011N-008E**  
 Township: **Hallock**  
 Acres: **17.7**  
 Date: **10/20/2011**

**JOHN LEEZER**  
 Land Specialist  
 Jim Maloof/Realtor  
 (309) 286-2221

Fsa borders provided by the Farm Service Agency as of May 23, 2008.  
 Soils data provided by USDA and NRCS.  
 PLSS provided by Illinois State Geological Survey.

Maps provided by:  
  
 ©AgriData, Inc 2008  
 www.AgriDataInc.com

Code	Soil Description	Acres	Percent of field	Il. State Productivity Index Legend	Corn Bu/A	Soybeans Bu/A
**279B	Rozetta silt loam, 1 to 5 percent slopes	14.6	82.7%		**162	**50
17	Keomah silt loam	2.8	15.6%		161	51
**857G	Strawn-Hennepin loams, 30 to 60 percent slopes	0.3	1.7%		**59	**20
Weighted Average					160.1	49.6

**Table: Optimum Crop Productivity Ratings for Illinois Soil by K.R. Olson and J.M. Lang, Office of Research, ACES, University of Illinois at Champaign-Urbana.** Version: 1/15/2011 Amended Table S2 B811 (Updated 3/1/2011)

Crop yields and productivity indices for optimum management (B811) are maintained at the following NRES web site:

<http://soilproductivity.nres.illinois.edu/>

\*\* Indexes adjusted for slope and erosion according to Bulletin 811 Table S3