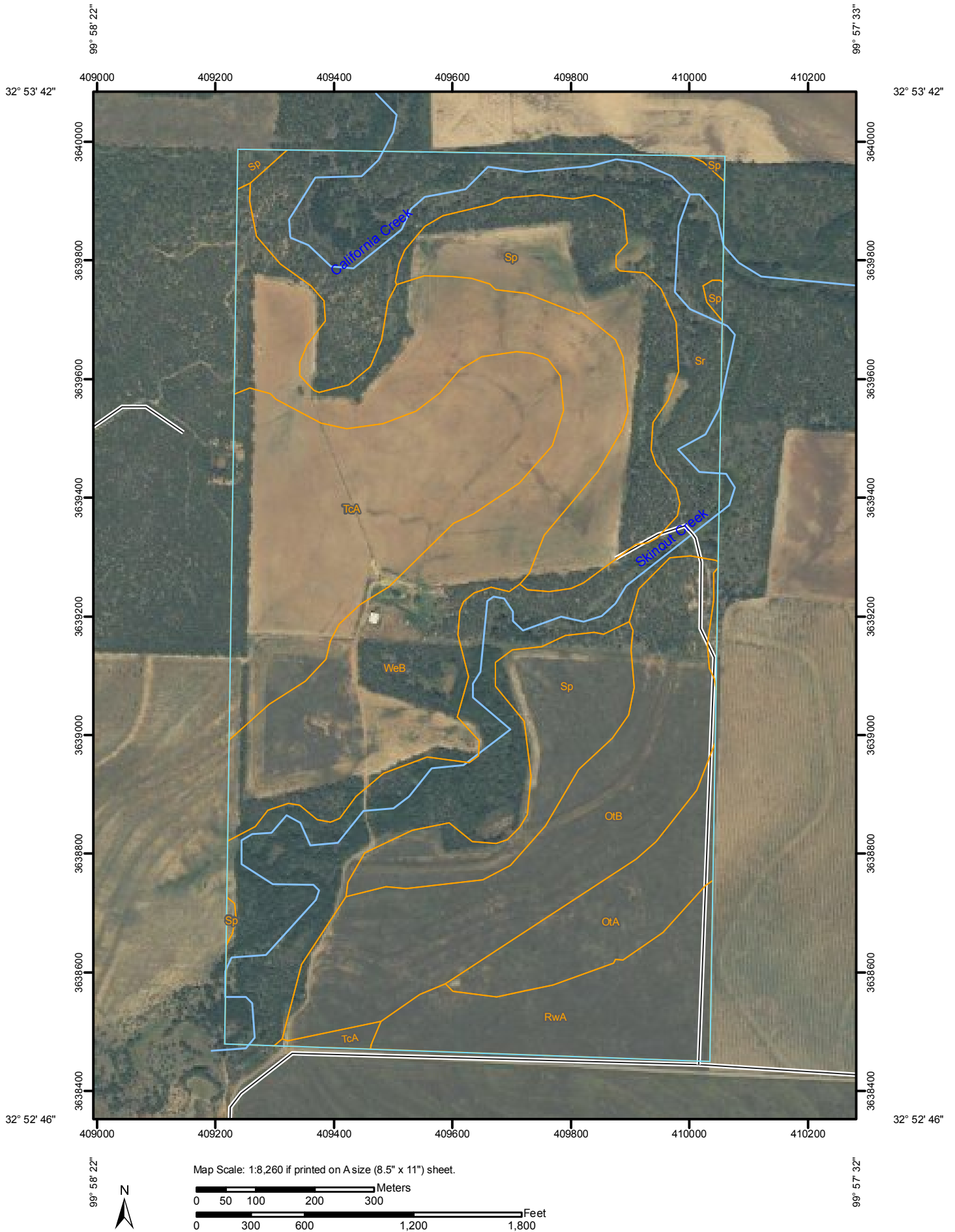



Soil Map—Jones County, Texas
(Double Creek Ranch)



Soil Map—Jones County, Texas
(Double Creek Ranch)

MAP LEGEND

Area of Interest (AOI)


 Area of Interest (AOI)

Soils

 Soil Map Units

Special Point Features


-  Blowout
-  Borrow Pit
-  Clay Spot
-  Closed Depression
-  Gravel Pit
-  Gravelly Spot
-  Landfill
-  Lava Flow
-  Marsh or swamp
-  Mine or Quarry
-  Miscellaneous Water
-  Perennial Water
-  Rock Outcrop
-  Saline Spot
-  Sandy Spot
-  Severely Eroded Spot
-  Sinkhole
-  Slide or Slip
-  Sodic Spot
-  Spoil Area
-  Stony Spot

 Very Stony Spot

 Wet Spot

 Other

Special Line Features

-  Gully
-  Short Steep Slope
-  Other






Political Features

 Cities

Water Features

 Streams and Canals

Transportation

-  Rails
-  Interstate Highways
-  US Routes
-  Major Roads
-  Local Roads

MAP INFORMATION

Map Scale: 1:8,260 if printed on A size (8.5" × 11") sheet.

The soil surveys that comprise your AOI were mapped at 1:20,000.

Warning: Soil Map may not be valid at this scale.

Enlargement of maps beyond the scale of mapping can cause misunderstanding of the detail of mapping and accuracy of soil line placement. The maps do not show the small areas of contrasting soils that could have been shown at a more detailed scale.

Please rely on the bar scale on each map sheet for accurate map measurements.

Source of Map: Natural Resources Conservation Service

Web Soil Survey URL: <http://websoilsurvey.nrcs.usda.gov>

Coordinate System: UTM Zone 14N NAD83

This product is generated from the USDA-NRCS certified data as of the version date(s) listed below.

Soil Survey Area: Jones County, Texas

Survey Area Data: Version 5, Oct 27, 2009

Date(s) aerial images were photographed: Data not available.

The orthophoto or other base map on which the soil lines were compiled and digitized probably differs from the background imagery displayed on these maps. As a result, some minor shifting of map unit boundaries may be evident.



Map Unit Legend

Jones County, Texas (TX253)			
Map Unit Symbol	Map Unit Name	Acres in AOI	Percent of AOI
OtA	Sagerton clay loam, 0 to 1 percent slopes	14.3	4.6%
OtB	Sagerton clay loam, 1 to 3 percent slopes	40.1	13.0%
RwA	Rowena clay loam, 0 to 1 percent slopes	19.7	6.4%
Sp	Spur loam	46.4	15.1%
Sr	Spur soils, broken	79.6	25.9%
TcA	Tillman clay loam, 0 to 1 percent slopes	45.3	14.7%
WeB	Weymouth clay loam, 1 to 3 percent slopes	62.4	20.3%
Totals for Area of Interest		307.8	100.0%