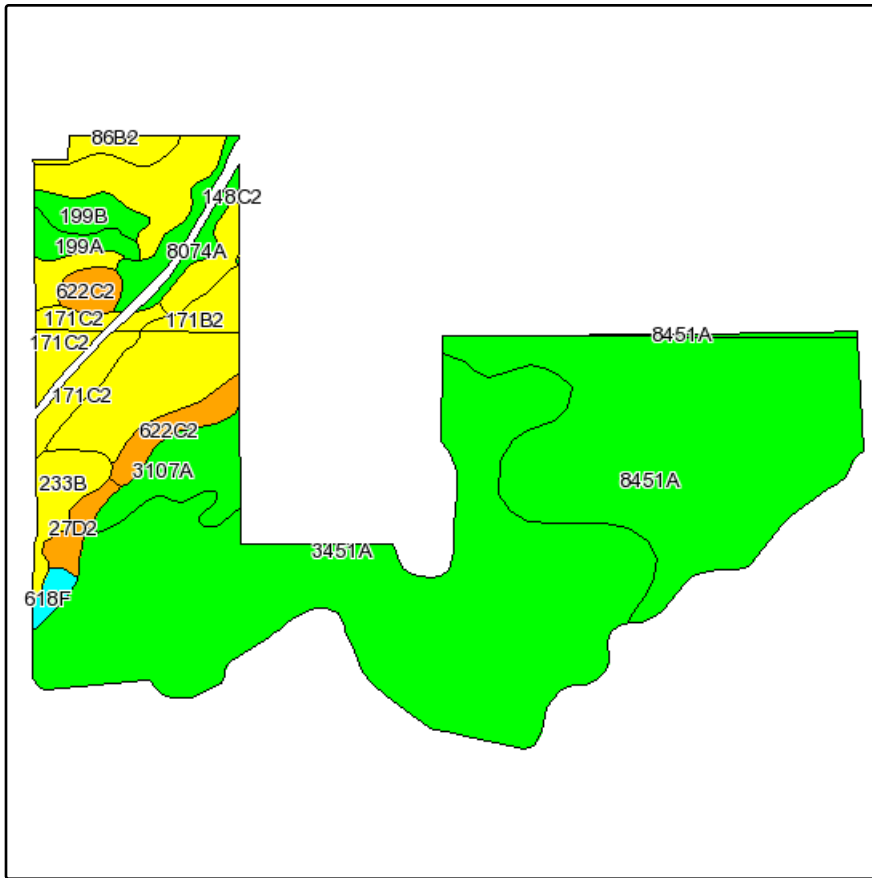
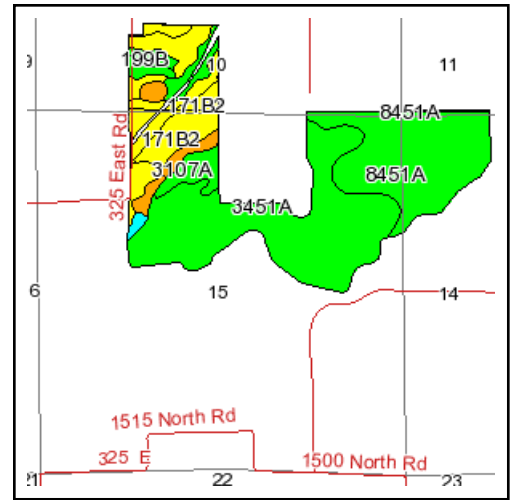


Soils Map



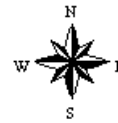
Fsa borders provided by the Farm Service Agency as of May 23, 2008.
Soils data provided by USDA and NRCS.
PLSS provided by Illinois State Geological Survey.



State: **Illinois**
County: **McLean**
Location: **010-021N-001E**
Township: **Waynesville**
Acres: **237.6**
Date: **10/27/2011**



Capital
Agricultural
Property
Services, Inc.



Maps provided by:



©AgriData, Inc 2008
www.AgriDataInc.com

Code	Soil Description	Acres	Percent of field	Il. State Productivity Index Legend	Corn Bu/A	Soybeans Bu/A	Wheat Bu/A	Crop productivity index for optimum management
3451A	Lawson silt loam, 0 to 2 percent slopes, frequently flooded	96.9	40.8%		190	61	73	140
8451A	Lawson silt loam, 0 to 2 percent slopes, occasionally flooded	66.1	27.8%		190	61	73	140
**171B2	Catlin silt loam, 2 to 5 percent slopes, eroded	12	5.1%		**178	**56	**69	**131
**56C2	Dana silty clay loam, 5 to 10 percent slopes, eroded	9	3.8%		**167	**52	**64	**122
3107A	Sawmill silty clay loam, 0 to 2 percent slopes, frequently flooded	8.2	3.5%		189	60	71	139
**171B2	Catlin silt loam, 2 to 5 percent slopes, eroded	7.5	3.1%		**178	**56	**69	**131
**171C2	Catlin silt loam, 5 to 10 percent slopes, eroded	5.8	2.4%		**174	**55	**68	**128
8074A	Radford silt loam, 0 to 2 percent slopes, occasionally flooded	5.2	2.2%		186	58	73	136
**233B	Birkbeck silt loam, 2 to 5 percent slopes	4.8	2.0%		**165	**51	**65	**121
**622C2	Wyanet silt loam, 5 to 10 percent slopes, eroded	3.8	1.6%		**150	**49	**60	**112
**199B	Plano silt loam, 2 to 5 percent slopes	3.4	1.4%		**192	**59	**73	**141
**148B2	Proctor silt loam, 2 to 5 percent slopes, eroded	3.1	1.3%		**176	**55	**67	**128
199A	Plano silt loam, 0 to 2 percent slopes	2.6	1.1%		194	60	74	142
**27D2	Miami silt loam, 10 to 18 percent slopes, eroded	2.5	1.0%		**136	**44	**53	**100
**622C2	Wyanet silt loam, 5 to 10 percent slopes, eroded	2.3	1.0%		**150	**49	**60	**112
**171C2	Catlin silt loam, 5 to 10 percent slopes, eroded	2.1	0.9%		**174	**55	**68	**128
**618F	Senachwine silt loam, 18 to 35 percent slopes	1.3	0.6%		**104	**33	**41	**76
8451A	Lawson silt loam, 0 to 2 percent slopes, occasionally flooded	1	0.4%		190	61	73	140
Weighted Average					184.8	59	71.1	136

Table: Optimum Crop Productivity Ratings for Illinois Soil by K.R. Olson and J.M. Lang, Office of Research, ACES, University of Illinois at

Champaign-Urbana. Version: 1/15/2011 Amended Table S2 B811 (Updated 3/1/2011)

Crop yields and productivity indices for optimum management (B811) are maintained at the following NRES web site: <http://soilproductivity.nres.illinois.edu/>

** Indexes adjusted for slope and erosion according to Bulletin 811 Table S3