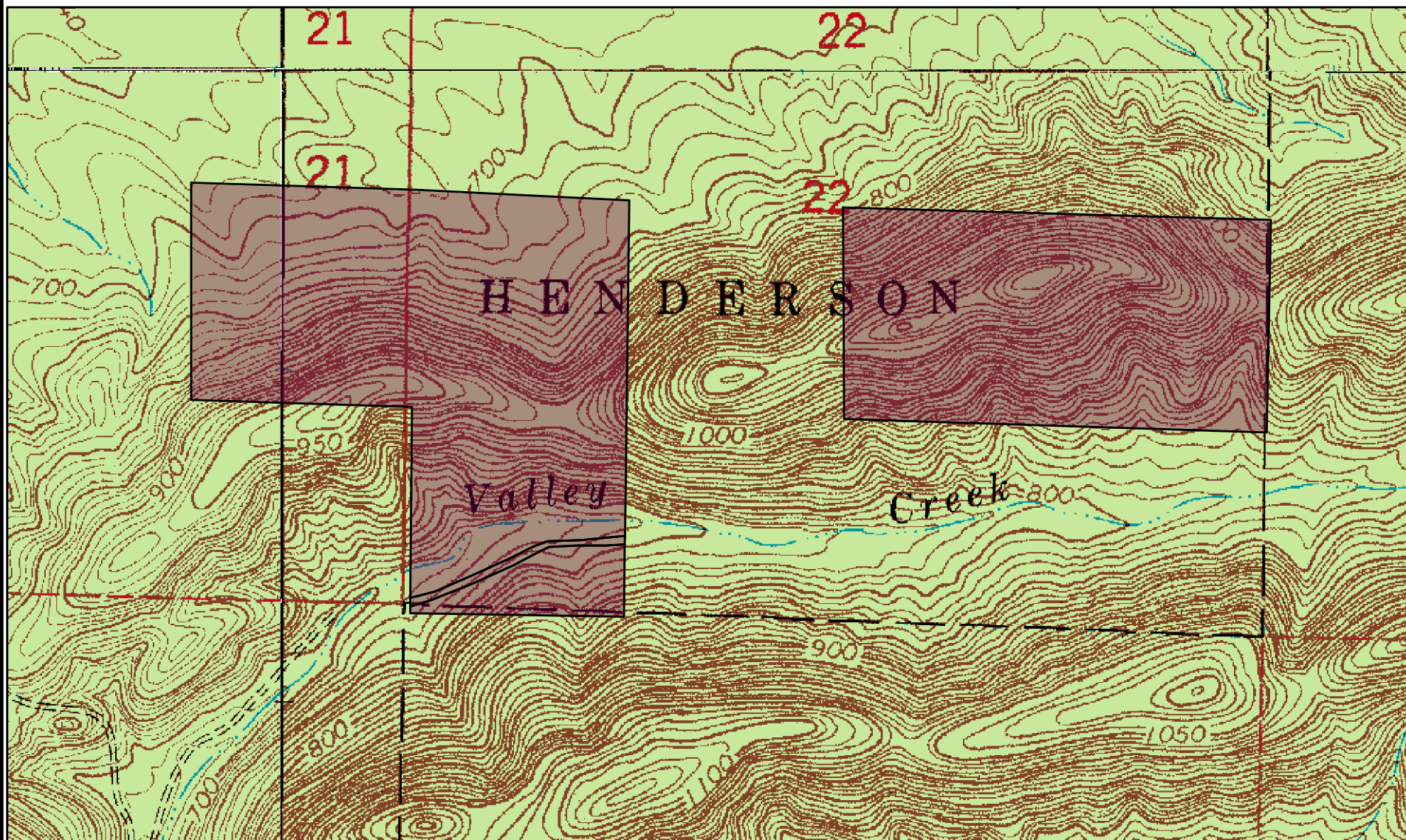


JM 055, "Baker Hollow #1 Tract" (Listing #4302)  
W½, SW¼, Sec. 22; NE¼, SE¼, Sec. 21, T4S, R21W  
Hot Spring County, Arkansas  
Containing 120 acres, more or less

## NOTICE OF LAND SALES

JM 056, "Baker Hollow #2 Tract" (Listing #4303)  
N½ of SE¼, Sec. 22, T4S, R21W  
Hot Spring County, Arkansas  
Containing 80 acres, more or less



0 0.125 0.25  
Miles



Created: October, 2011  
Drawn By: JDT