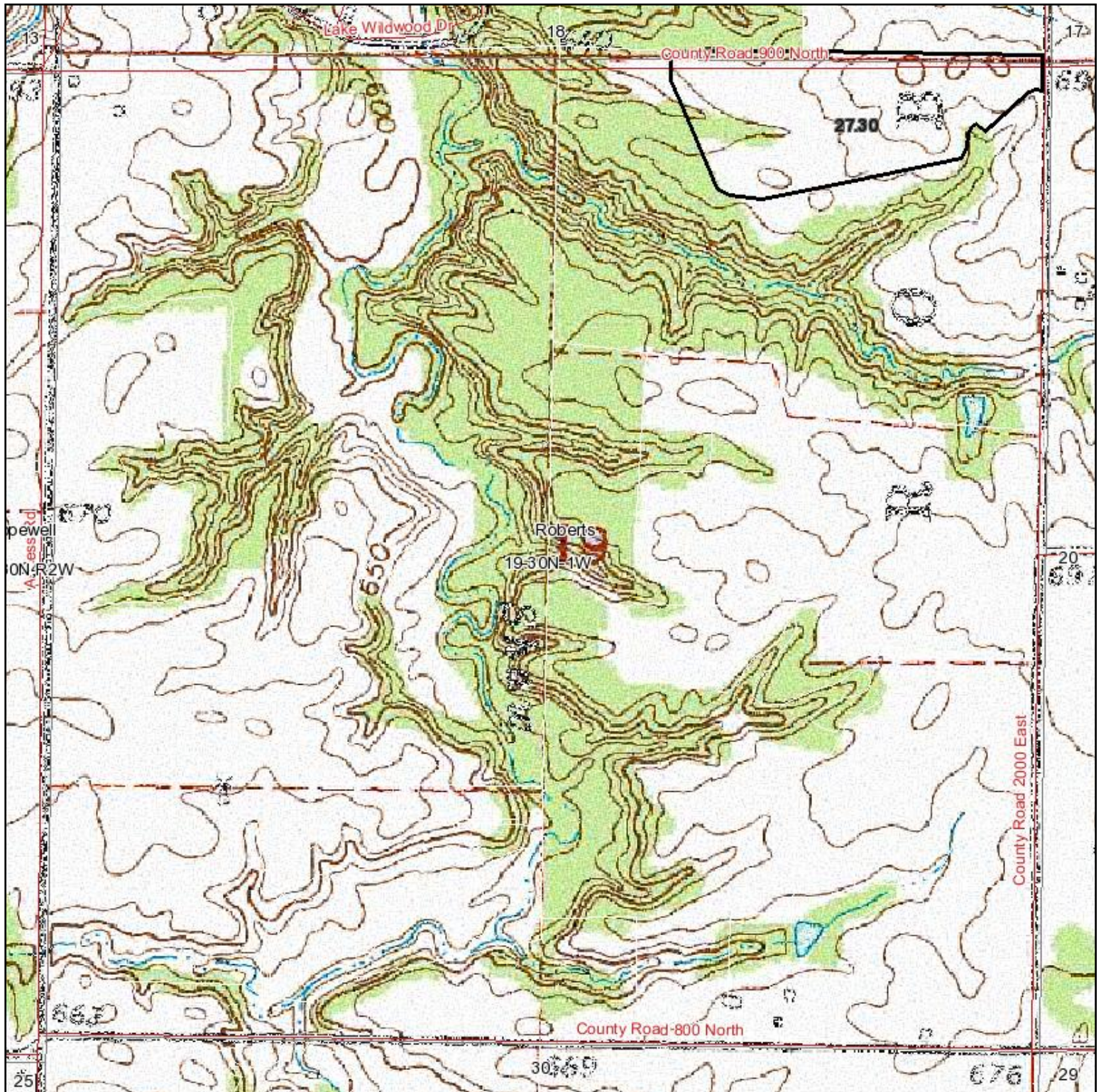


Topography Map



Capital
Agricultural
Property
Services, Inc.

Maps provided by:



©AgriData, Inc. 2011

www.AgriDataInc.com

19-30N-1W
Marshall County
Illinois

map center: 41° 2' 58, 89° 16' 6.12

scale: 10281



9/6/2011

Field borders provided by Farm Service Agency as of 5/21/2008. Aerial photography provided by Aerial Photography Field Office. PLSS provided