

Location Map

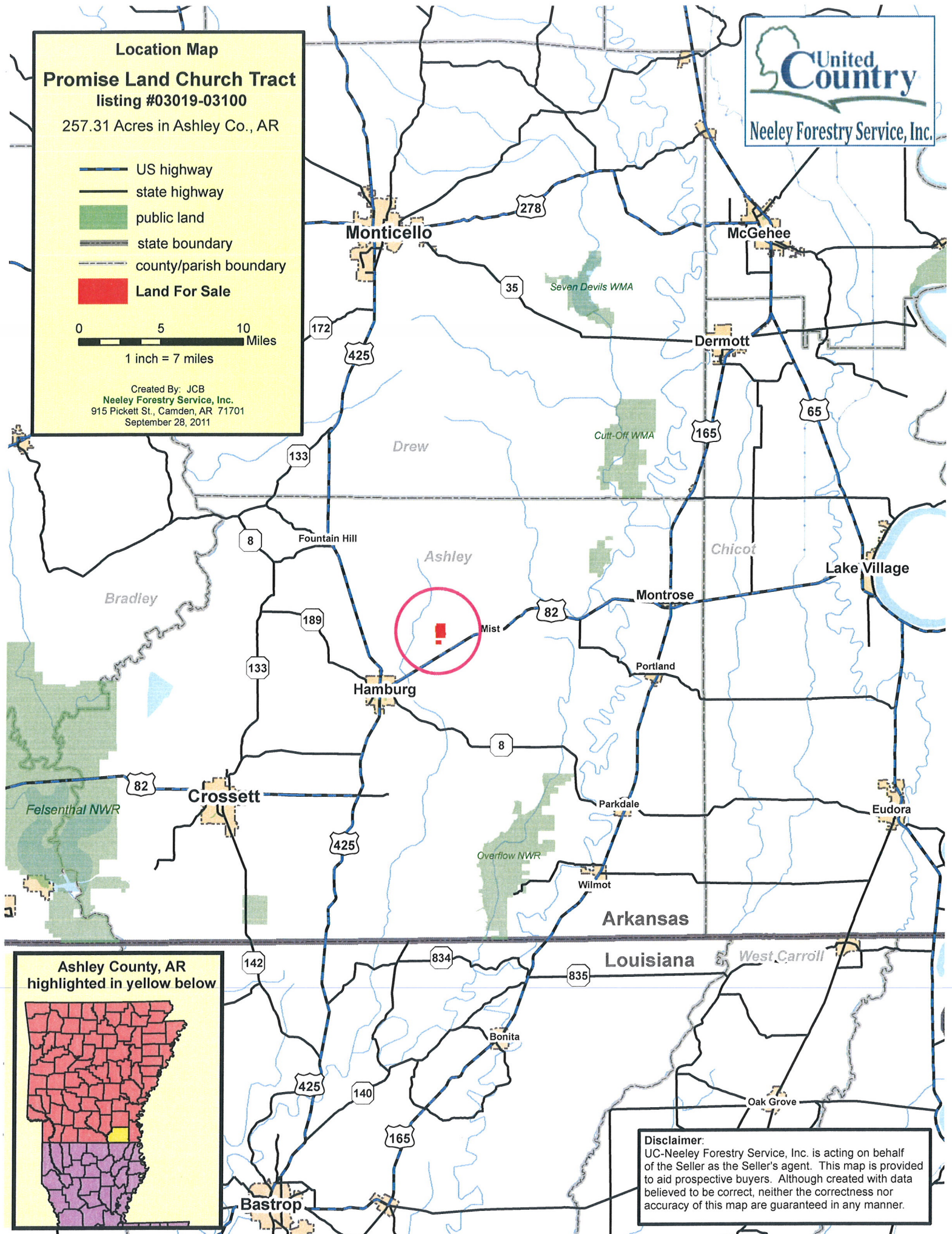
Promise Land Church Tract listing #03019-03100

257.31 Acres in Ashley Co., AR

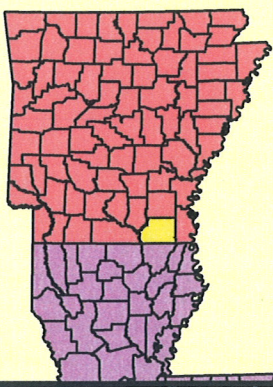
-  US highway
-  state highway
-  public land
-  state boundary
-  county/parish boundary
-  Land For Sale

0 5 10 Miles
1 inch = 7 miles

Created By: JCB
Neeley Forestry Service, Inc.
915 Pickett St., Camden, AR 71701
September 28, 2011



Ashley County, AR highlighted in yellow below



Disclaimer:
UC-Neeley Forestry Service, Inc. is acting on behalf of the Seller as the Seller's agent. This map is provided to aid prospective buyers. Although created with data believed to be correct, neither the correctness nor accuracy of this map are guaranteed in any manner.