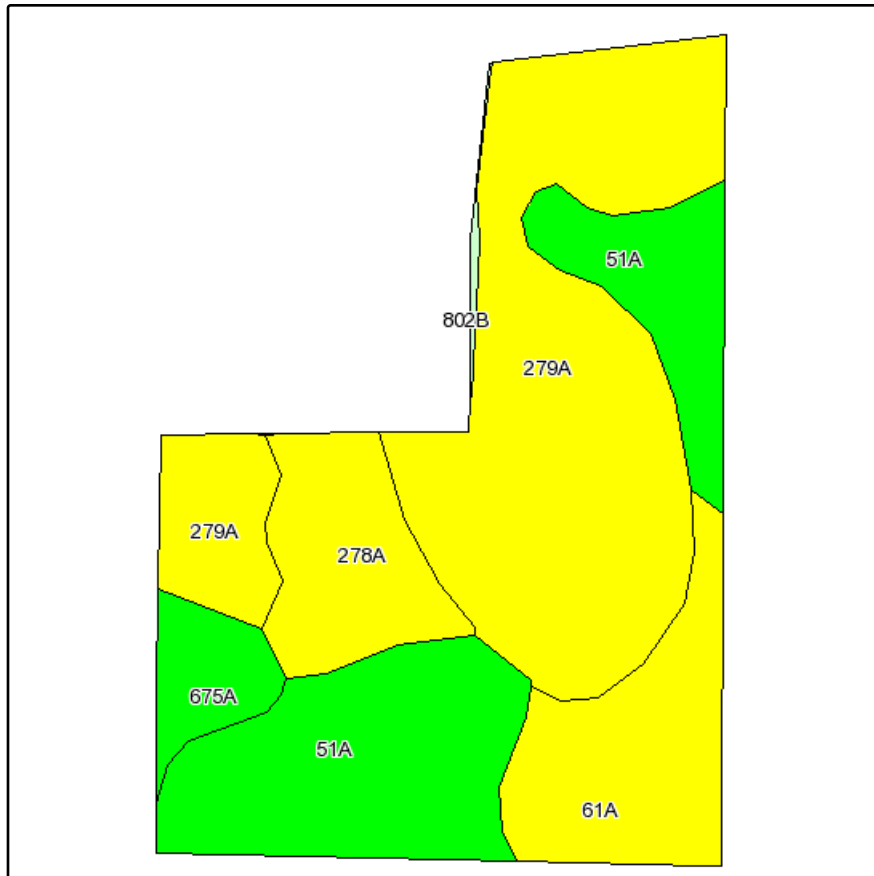
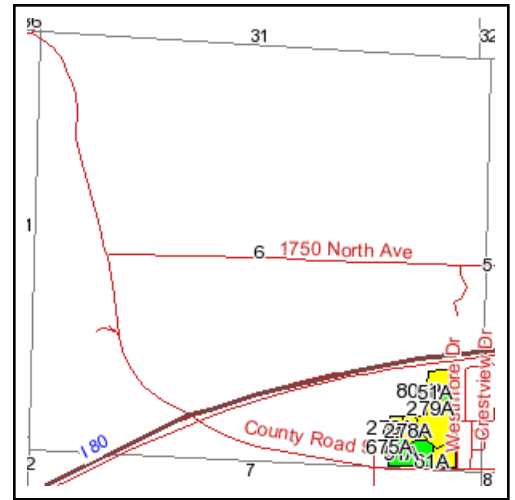


Soils Map



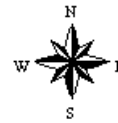
Fsa borders provided by the Farm Service Agency as of May 23, 2008.
Soils data provided by USDA and NRCS.
PLSS provided by Illinois State Geological Survey.



State: **Illinois**
County: **Bureau**
Location: **006-016N-009E**
Township: **Princeton**
Acres: **18.4**
Date: **8/31/2011**



**Capital
Agricultural
Property
Services, Inc.**



Maps provided by:



©AgriData, Inc 2008
www.AgriDataInc.com

Code	Soil Description	Acres	Percent of field	Il. State Productivity Index Legend	Corn Bu/A	Soybeans Bu/A	Wheat Bu/A	Crop productivity index for optimum management
279A	Rozetta silt loam, 0 to 2 percent slopes	8.2	44.8%		164	51	65	120
51A	Muscatune silt loam, 0 to 2 percent slopes	5	26.9%		200	64	75	147
61A	Atterberry silt loam, 0 to 2 percent slopes	2.5	13.4%		182	56	71	132
278A	Stronghurst silt loam, 0 to 2 percent slopes	1.8	10.1%		171	54	66	125
675A	Greenbush silt loam, 0 to 2 percent slopes	0.8	4.4%		184	58	70	134
802B	Orthents, loamy, undulating	0.1	0.4%					
Weighted Average					177	55.6	68.6	129.5

Table: Optimum Crop Productivity Ratings for Illinois Soil by K.R. Olson and J.M. Lang, Office of Research, ACES, University of Illinois at Champaign-Urbana. Version: 1/15/2011 Amended Table S2 B811 (Updated 3/1/2011)

Crop yields and productivity indices for optimum management (B811) are maintained at the following NRES web site: <http://soilproductivity.nres.illinois.edu/>

** Indexes adjusted for slope and erosion according to Bulletin 811 Table S3