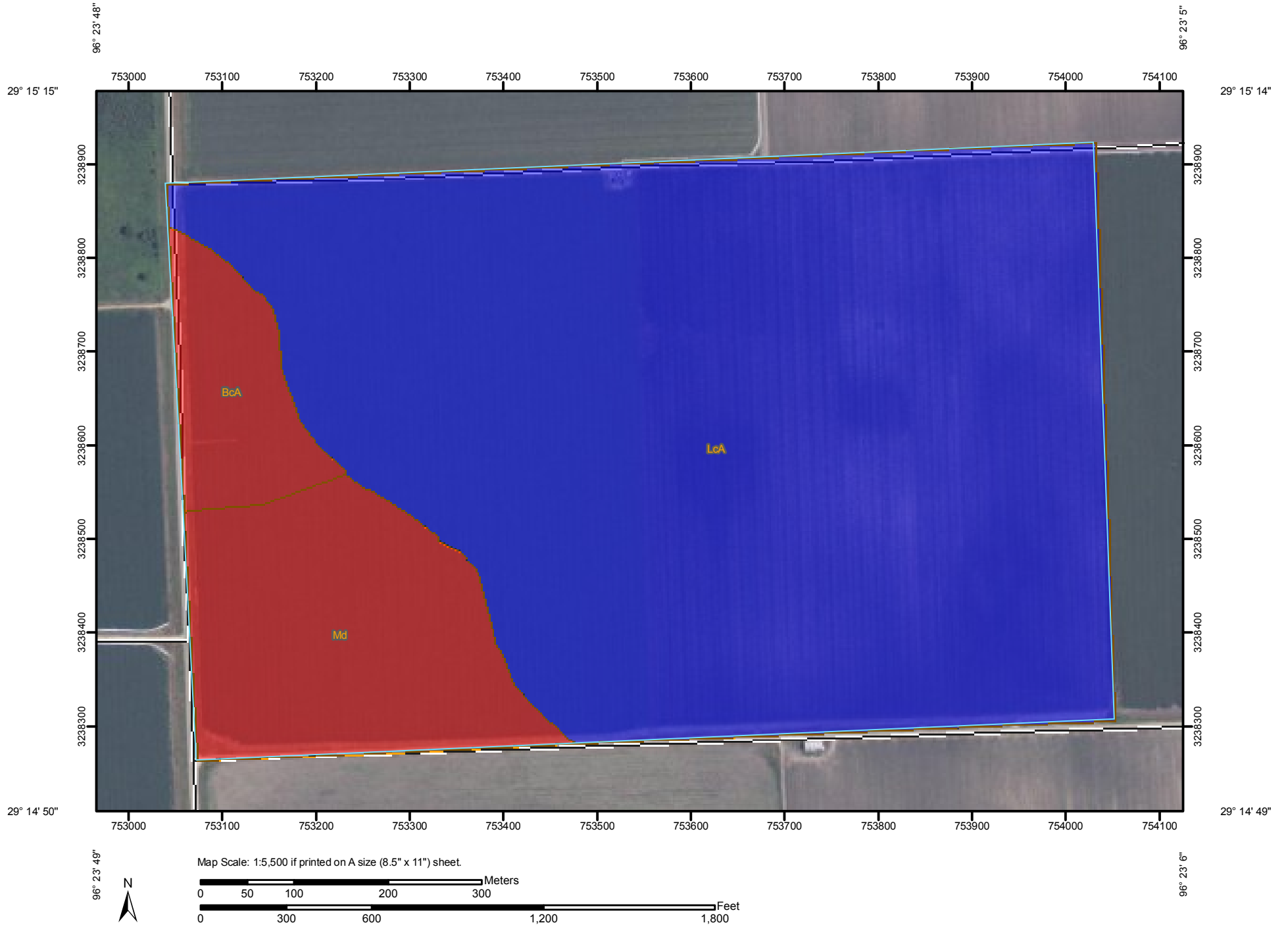


Yields of Non-Irrigated Crops (Component): Grain sorghum (Bu)—Wharton County, Texas
(Grain Sorghum Rating)



Yields of Non-Irrigated Crops (Component): Grain sorghum (Bu)—Wharton County, Texas
(Grain Sorghum Rating)

MAP LEGEND


Area of Interest (AOI)


 Area of Interest (AOI)


Soils

 Soil Map Units

Soil Ratings

 ≤ 85.5


 > 85.5 AND ≤ 90

 Not rated or not available

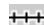
Political Features

 Cities

Water Features

 Streams and Canals


Transportation

 Rails

 Interstate Highways

 US Routes

 Major Roads

 Local Roads

MAP INFORMATION

Map Scale: 1:5,500 if printed on A size (8.5" × 11") sheet.

The soil surveys that comprise your AOI were mapped at 1:20,000.

Warning: Soil Map may not be valid at this scale.

Enlargement of maps beyond the scale of mapping can cause misunderstanding of the detail of mapping and accuracy of soil line placement. The maps do not show the small areas of contrasting soils that could have been shown at a more detailed scale.

Please rely on the bar scale on each map sheet for accurate map measurements.

Source of Map: Natural Resources Conservation Service

Web Soil Survey URL: <http://websoilsurvey.nrcs.usda.gov>

Coordinate System: UTM Zone 14N NAD83

This product is generated from the USDA-NRCS certified data as of the version date(s) listed below.

Soil Survey Area: Wharton County, Texas

Survey Area Data: Version 6, Oct 26, 2009

Date(s) aerial images were photographed: Data not available.

The orthophoto or other base map on which the soil lines were compiled and digitized probably differs from the background imagery displayed on these maps. As a result, some minor shifting of map unit boundaries may be evident.



Yields of Non-Irrigated Crops (Component): Grain sorghum (Bu)

| Yields of Non-Irrigated Crops (Component): Grain sorghum (Bu)— Summary by Map Unit — Wharton County, Texas (TX481) | | | | |
|--|--|--------|--------------|----------------|
| Map unit symbol | Map unit name | Rating | Acres in AOI | Percent of AOI |
| BcA | Bernard clay loam, 0 to 1 percent slopes | 85.50 | 7.9 | 5.3% |
| LcA | Lake Charles clay, 0 to 1 percent slopes | 90.00 | 120.4 | 80.3% |
| Md | Bernard loam, 0 to 1 percent slopes | 85.50 | 21.6 | 14.4% |
| Totals for Area of Interest | | | 150.0 | 100.0% |

Description

These are the estimated average yields per acre that can be expected of selected nonirrigated crops under a high level of management. In any given year, yields may be higher or lower than those indicated because of variations in rainfall and other climatic factors.

In the database, some states maintain crop yield data by individual map unit component and others maintain the data at the map unit level. Attributes are included in this application for both, although only one or the other is likely to contain data for any given geographic area. This attribute uses data maintained at the map unit component level.

The yields are actually recorded as three separate values in the database. A low value and a high value indicate the range for the soil component. A "representative" value indicates the expected value for the component. For these yields, only the representative value is used.

The yields are based mainly on the experience and records of farmers, conservationists, and extension agents. Available yield data from nearby areas and results of field trials and demonstrations also are considered.

The management needed to obtain the indicated yields of the various crops depends on the kind of soil and the crop. Management can include drainage, erosion control, and protection from flooding; the proper planting and seeding rates; suitable high-yielding crop varieties; appropriate and timely tillage; control of weeds, plant diseases, and harmful insects; favorable soil reaction and optimum levels of nitrogen, phosphorus, potassium, and trace elements for each crop; effective use of crop residue, barnyard manure, and green manure crops; and harvesting that ensures the smallest possible loss.

The estimated yields reflect the productive capacity of each soil for the selected crop. Yields are likely to increase as new production technology is developed. The productivity of a given soil compared with that of other soils, however, is not likely to change.

Rating Options

Crop: Grain sorghum

Yield Units: Bu

Aggregation Method: Weighted Average

Aggregation is the process by which a set of component attribute values is reduced to a single value that represents the map unit as a whole.

A map unit is typically composed of one or more "components". A component is either some type of soil or some nonsoil entity, e.g., rock outcrop. For the attribute being aggregated, the first step of the aggregation process is to derive one attribute value for each of a map unit's components. From this set of component attributes, the next step of the aggregation process derives a single value that represents the map unit as a whole. Once a single value for each map unit is derived, a thematic map for soil map units can be rendered. Aggregation must be done because, on any soil map, map units are delineated but components are not.

For each of a map unit's components, a corresponding percent composition is recorded. A percent composition of 60 indicates that the corresponding component typically makes up approximately 60% of the map unit. Percent composition is a critical factor in some, but not all, aggregation methods.

The aggregation method "Weighted Average" computes a weighted average value for all components in the map unit. Percent composition is the weighting factor.

The result returned by this aggregation method represents a weighted average value of the corresponding attribute throughout the map unit.

Component Percent Cutoff: None Specified

Components whose percent composition is below the cutoff value will not be considered. If no cutoff value is specified, all components in the database will be considered. The data for some contrasting soils of minor extent may not be in the database, and therefore are not considered.

Tie-break Rule: Higher

The tie-break rule indicates which value should be selected from a set of multiple candidate values, or which value should be selected in the event of a percent composition tie.

Interpret Nulls as Zero: Yes

This option indicates if a null value for a component should be converted to zero before aggregation occurs. This will be done only if a map unit has at least one component where this value is not null.