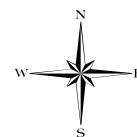
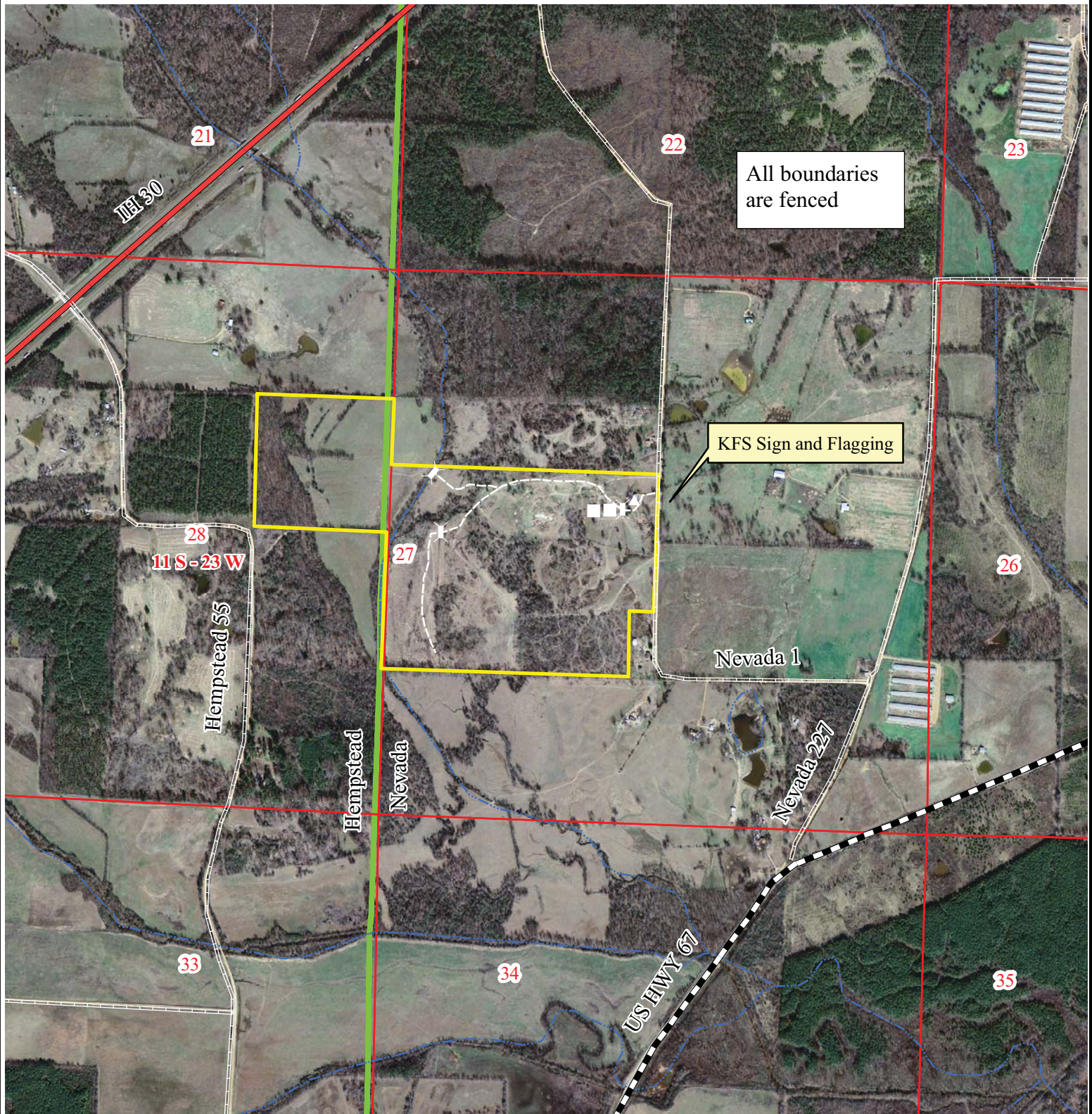


Pt. N1/2 of SW1/4, Sec. 27, T11S, R23W, Nevada County, Arkansas (+/-118 Acres) and
SE1/4 of NE1/4, Sec. 28, T11S, R23W, Hempstead County, Arkansas (+/-40 Acres)



2006 AR DOQQ
September 2011
Printed By: RDH