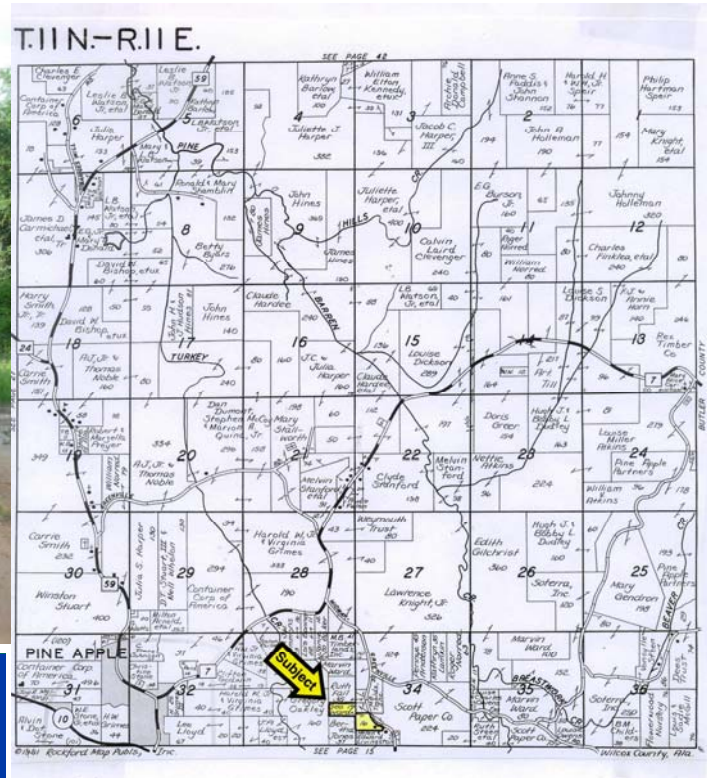




# GREAT SOUTHERN Land



**Steen Road Timber Tract #66-022**  
**35+/- Acres in Wilcox County, Alabama**  
**Offered for \$75,000**



[www.GreatSouthernLand.com](http://www.GreatSouthernLand.com)

This nice +/-35-acre timber tract consisting of 2 contiguous parcels is located on the west side of Steen Road about 2 miles east of the historic east Wilcox County town of Pine Apple. It features primarily 15-17 year old loblolly pine plantation, with approximately 800 feet of frontage on Steen Road. General access to the tract is off the road at this location. Please note that there is a 50+ foot access lane where the parcels join which provides unrestricted ingress and egress to the back parcel. The access road shown in red on the 2006 aerial photograph is for timber harvesting and the unrestricted access is off Steen Road.

This is an excellent small timber tract which also will provide very good hunting. Please call **Don Donald at the Camden Office at 1-800-766-0759** to make an appointment to see.

For a tour or more information call:

Don Donald, ALC, Broker  
1-866-788-0759  
334-419-2874 cell  
[grsouth@frontiernet.net](mailto:grsouth@frontiernet.net)



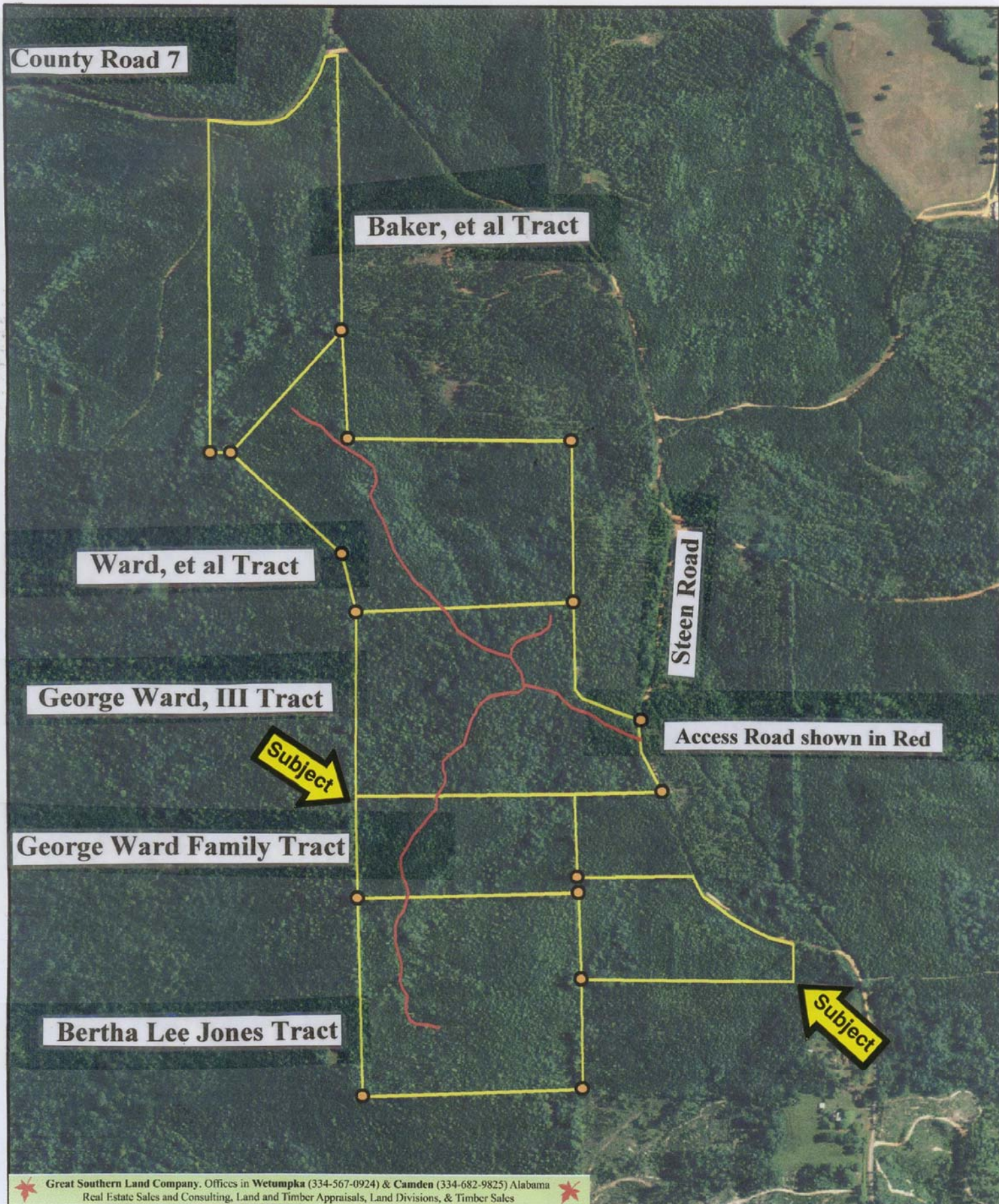
Great  
Southern  
Land







# Ward & Jones Properties - Sec. 33, T11N, R11E, Wilcox Co.



Great Southern Land Company. Offices in Wetumpka (334-567-0924) & Camden (334-682-9825) Alabama  
Real Estate Sales and Consulting, Land and Timber Appraisals, Land Divisions, & Timber Sales



0 660 1,320 1,980 2,640 Feet