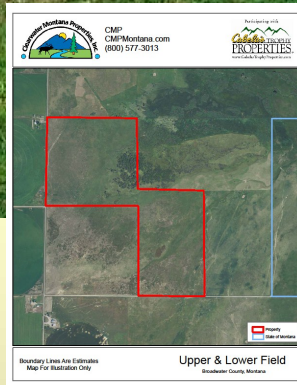
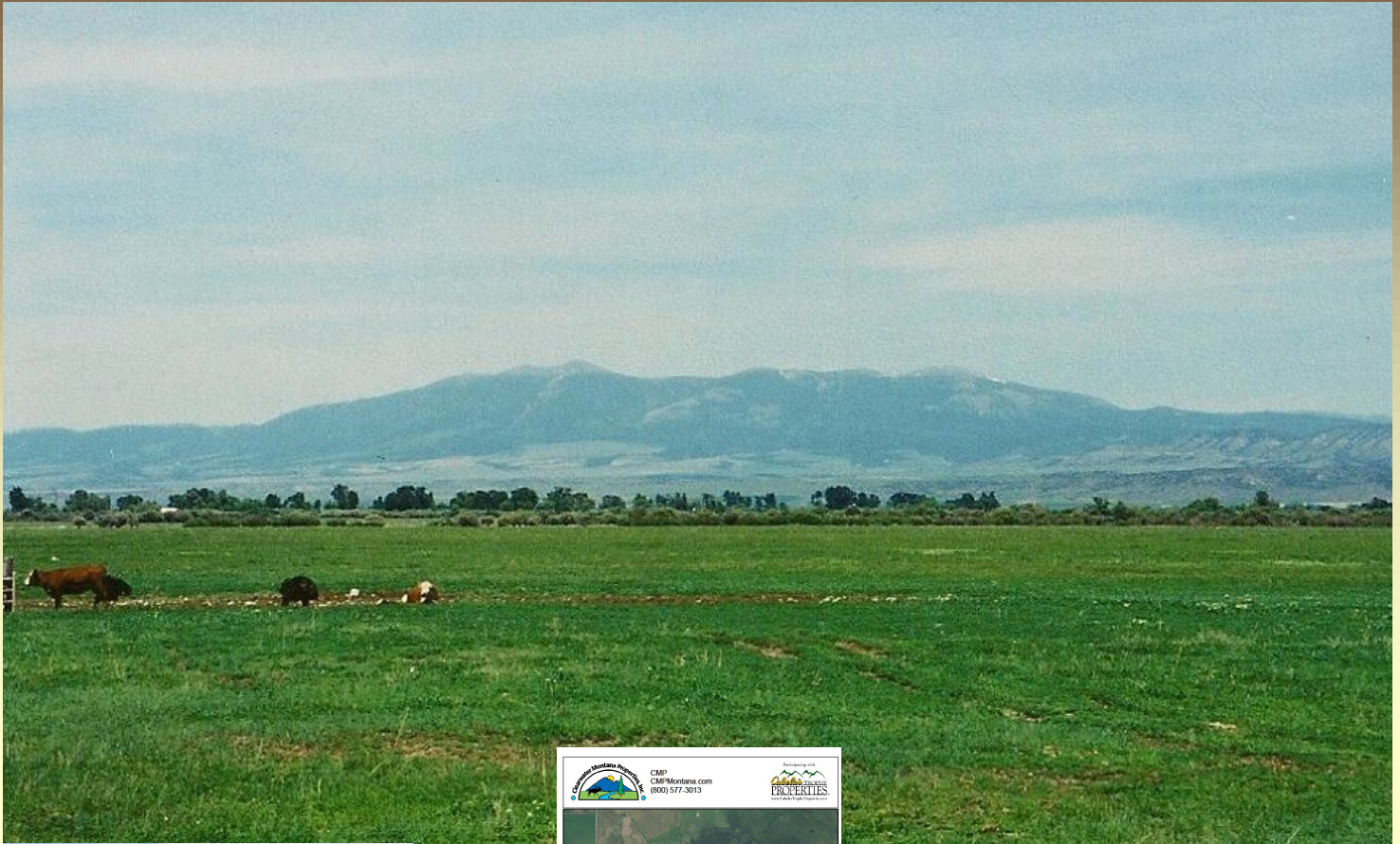




# MISSOURI RIVER VALLEY GRAZING

## \$ 445,000



**HWY 437, TOSTON, MT**

- **159+/- DEEDED ACRES**
- **WELL 30 FT**
- **50% MINERAL RIGHTS**
- **THE UPPER FIELD PROPERTY IS SUB-IRRIGATED, AND HAS BEEN USED FOR WINTER CALVING. THERE IS A WELL WITH A STOCK TANK IN THE SW CORNER. THE FIELD IS RICH WITH GAME BIRDS AND WHITE TAILED DEER. SPECTACULAR VIEW OF THE BIG BELT MOUNTAINS.**

**FOR MORE INFORMATION PLEASE CONTACT KEVIN WETHERELL AND REFER TO CMP#2-279896H**



PRESENTED EXCLUSIVELY BY: CLEARWATER MONTANA PROPERTIES, INC.  
[INFO@CMPMONTANA.COM](mailto:INFO@CMPMONTANA.COM)

CLEARWATER MONTANA PROPERTIES, INC.  
TOLL FREE 800-577-3013  
[WWW.CMPMONTANA.COM](http://WWW.CMPMONTANA.COM)  
[WWW.CABELASTROPHYPROPERTIES.COM](http://WWW.CABELASTROPHYPROPERTIES.COM)