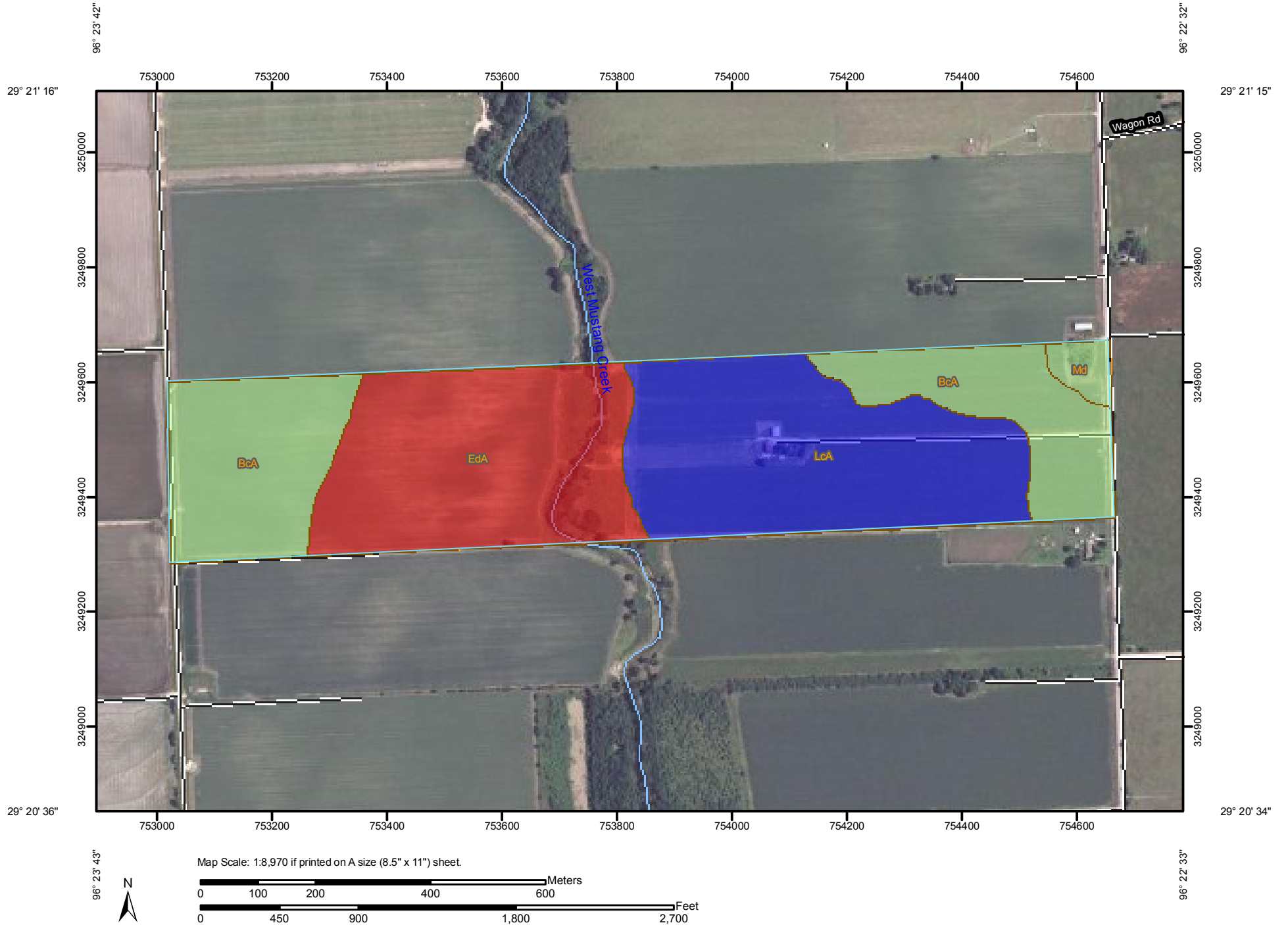
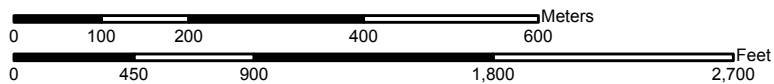


Yields of Non-Irrigated Crops (Component): Grain sorghum (Bu)—Wharton County, Texas  
(Soil Yields)



Map Scale: 1:8,970 if printed on A size (8.5" x 11") sheet.



Yields of Non-Irrigated Crops (Component): Grain sorghum (Bu)—Wharton County, Texas  
(Soil Yields)

## MAP LEGEND


### Area of Interest (AOI)


 Area of Interest (AOI)


### Soils


 Soil Map Units

### Soil Ratings

  $\leq 61.75$

  $> 61.75$  AND  $\leq 85.5$


  $> 85.5$  AND  $\leq 90$

 Not rated or not available

### Political Features

 Cities

### Water Features

 Streams and Canals


### Transportation

 Rails

 Interstate Highways

 US Routes

 Major Roads

 Local Roads

## MAP INFORMATION

Map Scale: 1:8,970 if printed on A size (8.5" × 11") sheet.

The soil surveys that comprise your AOI were mapped at 1:20,000.

Warning: Soil Map may not be valid at this scale.

Enlargement of maps beyond the scale of mapping can cause misunderstanding of the detail of mapping and accuracy of soil line placement. The maps do not show the small areas of contrasting soils that could have been shown at a more detailed scale.

Please rely on the bar scale on each map sheet for accurate map measurements.

Source of Map: Natural Resources Conservation Service

Web Soil Survey URL: <http://websoilsurvey.nrcs.usda.gov>

Coordinate System: UTM Zone 14N NAD83

This product is generated from the USDA-NRCS certified data as of the version date(s) listed below.

Soil Survey Area: Wharton County, Texas

Survey Area Data: Version 6, Oct 26, 2009

Date(s) aerial images were photographed: Data not available.

The orthophoto or other base map on which the soil lines were compiled and digitized probably differs from the background imagery displayed on these maps. As a result, some minor shifting of map unit boundaries may be evident.



## Yields of Non-Irrigated Crops (Component): Grain sorghum (Bu)

Yields of Non-Irrigated Crops (Component): Grain sorghum (Bu)— Summary by Map Unit — Wharton County, Texas (TX481)				
Map unit symbol	Map unit name	Rating	Acres in AOI	Percent of AOI
BcA	Bernard clay loam, 0 to 1 percent slopes	85.50	39.6	31.3%
EdA	Edna fine sandy loam, 0 to 1 percent slopes	61.75	40.2	31.8%
LcA	Lake Charles clay, 0 to 1 percent slopes	90.00	44.3	35.0%
Md	Bernard loam, 0 to 1 percent slopes	85.50	2.4	1.9%
<b>Totals for Area of Interest</b>			<b>126.5</b>	<b>100.0%</b>

## Description

These are the estimated average yields per acre that can be expected of selected nonirrigated crops under a high level of management. In any given year, yields may be higher or lower than those indicated because of variations in rainfall and other climatic factors.

In the database, some states maintain crop yield data by individual map unit component and others maintain the data at the map unit level. Attributes are included in this application for both, although only one or the other is likely to contain data for any given geographic area. This attribute uses data maintained at the map unit component level.

The yields are actually recorded as three separate values in the database. A low value and a high value indicate the range for the soil component. A "representative" value indicates the expected value for the component. For these yields, only the representative value is used.

The yields are based mainly on the experience and records of farmers, conservationists, and extension agents. Available yield data from nearby areas and results of field trials and demonstrations also are considered.

The management needed to obtain the indicated yields of the various crops depends on the kind of soil and the crop. Management can include drainage, erosion control, and protection from flooding; the proper planting and seeding rates; suitable high-yielding crop varieties; appropriate and timely tillage; control of weeds, plant diseases, and harmful insects; favorable soil reaction and optimum levels of nitrogen, phosphorus, potassium, and trace elements for each crop; effective use of crop residue, barnyard manure, and green manure crops; and harvesting that ensures the smallest possible loss.

The estimated yields reflect the productive capacity of each soil for the selected crop. Yields are likely to increase as new production technology is developed. The productivity of a given soil compared with that of other soils, however, is not likely to change.

## Rating Options

*Crop:* Grain sorghum

*Yield Units:* Bu

*Aggregation Method:* Weighted Average

*Component Percent Cutoff:* None Specified

*Tie-break Rule:* Higher

*Interpret Nulls as Zero:* Yes