

KAREN ZODY 15.994 ACRE PLAT AND DESCRIPTION COMBINING 8.19 ACRES, 6.55 ACRES AND 1.202 ACRES

PART OF THE NORTHEAST QUARTER OF THE NORTHEAST
QUARTER OF SECTION 29 TOWNSHIP 8 NORTH RANGE 3 EAST OF
THE SECOND PRINCIPAL MERIDIAN, VAN BUREN TOWNSHIP
BROWN COUNTY, INDIANA

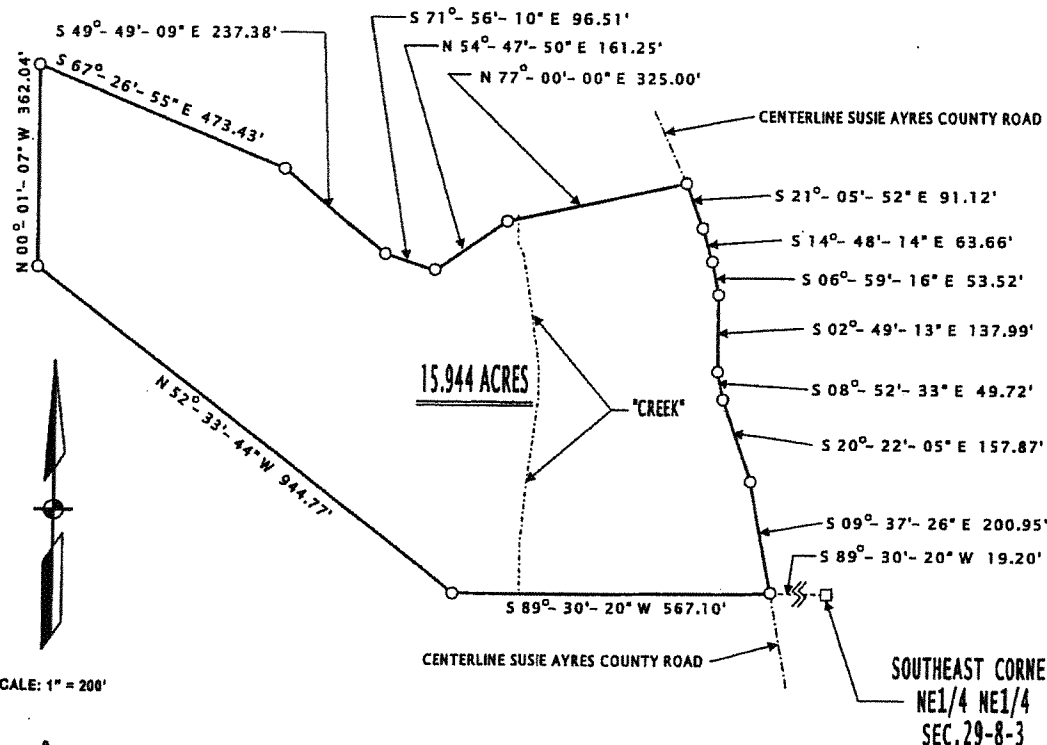
OWNER OF RECORD
KAREN ZODY
INST. 2004-3769
INST. 2005-3994
EXCEPTION INST. 2005-1460

JAMES BENNETT & ASSOCIATES
1051 OLD STATE ROAD 46
NASHVILLE, IND. 47448
JAMES BENNETT P.E. P.L.S.

DESCRIPTION:

PART OF THE NORTHEAST QUARTER OF THE NORTHEAST QUARTER OF SECTION 29 TOWNSHIP 8 NORTH, RANGE 3 EAST OF THE SECOND PRINCIPAL MERIDIAN, VAN BUREN TOWNSHIP, BROWN COUNTY, INDIANA DESCRIBED AS FOLLOWS: COMMENCING AT THE SOUTHEAST CORNER OF THE NORTHEAST QUARTER OF THE NORTHEAST QUARTER OF SAID SECTION 29; THENCE SOUTH 89 DEGREES 30 MINUTES 20 SECONDS WEST (BEARING FROM DEED) ON AND ALONG THE SOUTH LINE OF SAID NORTHEAST QUARTER, NORTHEAST QUARTER 19.20 FEET TO THE CENTER OF SUSIE AYRES COUNTY ROAD AND THE BEGINNING; THENCE CONTINUING SOUTH 89 DEGREES 30 MINUTES 20 SECONDS WEST ON AND ALONG SAID SOUTH LINE 567.10 FEET; THENCE NORTH 52 DEGREES 33 MINUTES 44 SECONDS WEST 944.77 FEET TO THE WEST LINE OF SAID NORTHEAST QUARTER, NORTHEAST QUARTER; THENCE NORTH 00 DEGREES 01 MINUTES 07 SECONDS WEST ON AND ALONG SAID WEST LINE 362.04 FEET; THENCE SOUTH 67 DEGREES 26 MINUTES 55 SECONDS EAST 473.43 FEET; THENCE SOUTH 49 DEGREES 49 MINUTES 09 SECONDS EAST 237.38 FEET; THENCE SOUTH 71 DEGREES 56 MINUTES 10 SECONDS EAST 96.51 FEET; THENCE NORTH 54 DEGREES 47 MINUTES 50 SECONDS EAST 161.25 FEET; THENCE NORTH 77 DEGREES 00 MINUTES 00 SECONDS EAST 325.00 FEET TO THE CENTER OF SAID SUSIE AYRES COUNTY ROAD; THENCE THE FOLLOWING SEVEN (7) COURSES ARE WITH THE CENTER OF SAID COUNTY ROAD: SOUTH 21 DEGREES 05 MINUTES 52 SECONDS EAST 91.12 FEET, SOUTH 14 DEGREES 48 MINUTES 14 SECONDS EAST 63.66 FEET, SOUTH 06 DEGREES 59 MINUTES 16 SECONDS EAST 53.52 FEET, SOUTH 02 DEGREES 49 MINUTES 13 SECONDS EAST 137.99 FEET, SOUTH 08 DEGREES 52 MINUTES 33 SECONDS EAST 49.72 FEET, SOUTH 20 DEGREES 22 MINUTES 05 SECONDS EAST 157.87 FEET, SOUTH 09 DEGREES 37 MINUTES 26 SECONDS EAST 200.95 FEET, SOUTH 89 DEGREES 30 MINUTES 20 SECONDS WEST 19.20 FEET TO THE BEGINNING, CONTAINING 15.944 ACRES MORE OR LESS.

SUBJECT TO SUSIE AYRES COUNTY ROAD ALSO, SUBJECT TO ALL OTHER RIGHTS OF WAY AND EASEMENTS EXISTING OR OF RECORD AFFECTING SAID REAL ESTATE.



SCALE: 1" = 200'

