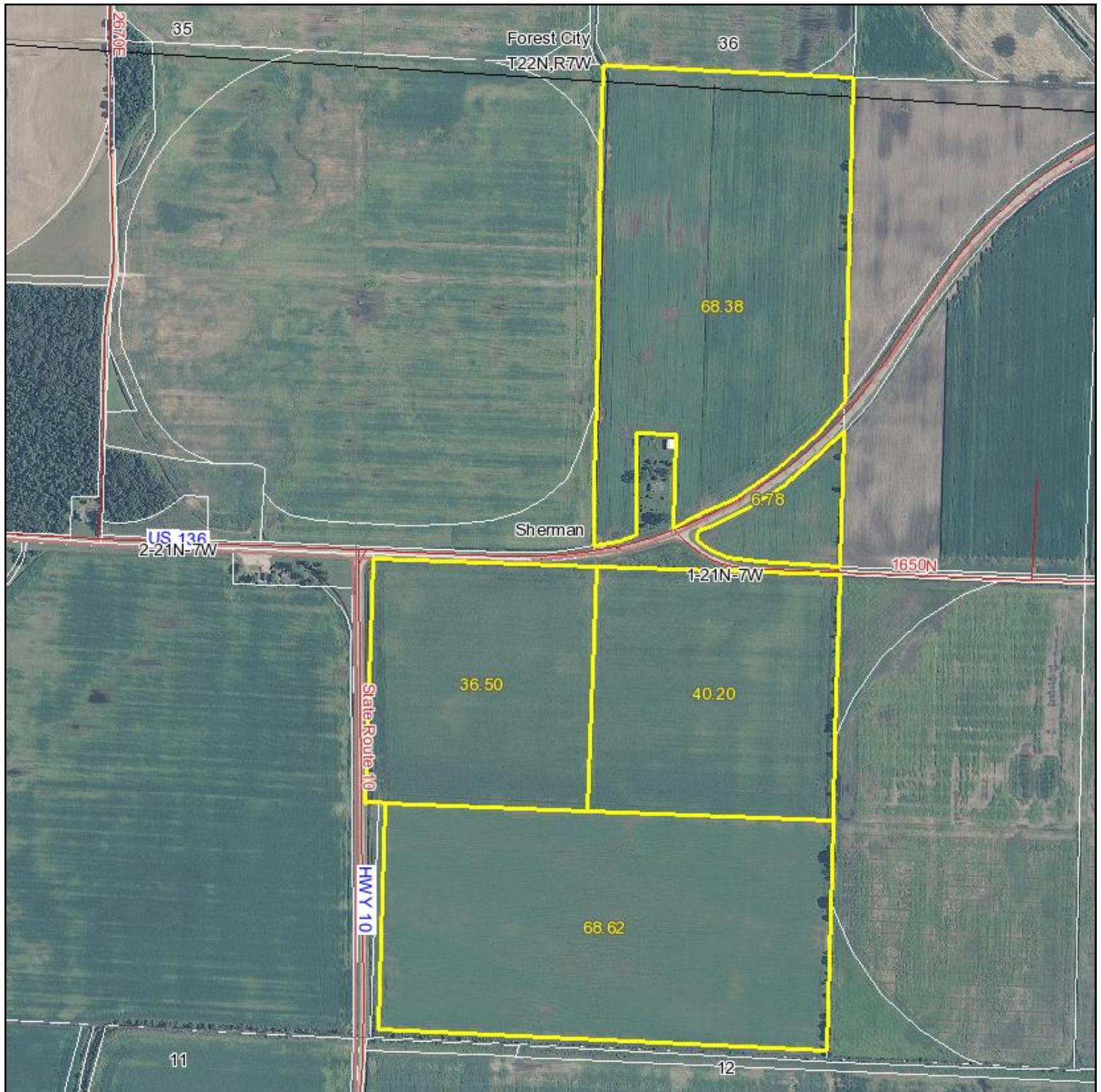


Aerial Map



Capital
Agricultural
Property
Services, Inc.

Maps provided by:



©AgriData, Inc. 2011

www.AgriDataInc.com

1-21N-7W
Mason County
Illinois

map center: 40° 17' 46.68, 89° 50' 37.53

scale: 10253



7/21/2011

Field borders provided by Farm Service Agency as of 5/21/2008. Aerial photography provided by Aerial Photography Field Office. PLSS provided