



# John Hall & Company

COMMERCIAL/INVESTMENT PROPERTY □ LAND

[www.johnhallco.com](http://www.johnhallco.com)

## FOR SALE COUSINS PROPERTY – 21 +/- ACRES

**LOCATION:** Elmore County at Holtville and Jordan Lake Reservoir

**SIZE:** 21 +/- acres

**TERRAIN:** Level

**LAND USE:** Residential Home Site, Development

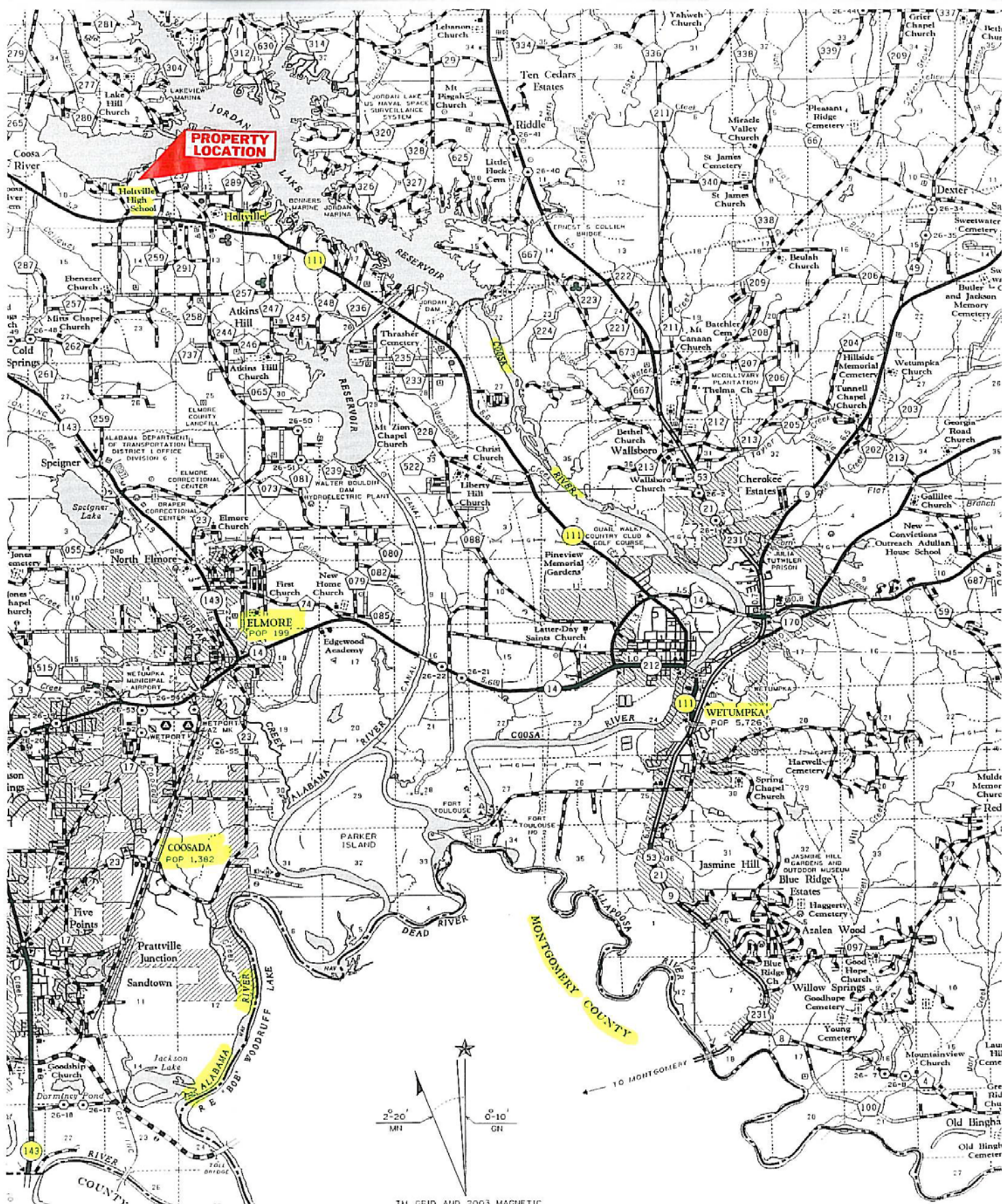
**PRICE:** \$4,500 per acre or \$94,500.00

**AGENT:** **Pete Hall (334) 312-7099**

**SPECIAL FEATURES:** Here are 21 +/- acres in a terrific location within a tight knit community. The 21 acres consists of mature pines that have been thinned to residential cut. The property has frontage on AL Hwy. 111 (Holtville Road) and Carpenter Road. The Holtville Schools are less than a mile away – within walking distance!

There is water, power, and high speed internet already running along the roads. Lake Jordan Reservoir is also within 1 mile and there are several public boat launches near by. An awesome opportunity for a single family or a family compound and the price is right!

This company, or any of its agents, will not be held responsible for any false or misleading information. Information is collected by agents from sources that agent deems reliable. Agent has used his best efforts and good faith to obtain reliable information.



TM GRID AND 2003 MAGNETIC





# TWP.19N-RNG.17E - NORTHEAST

ELMORE COUNTY, ALABAMA (LOCATOR 14)

