



Colter Farm

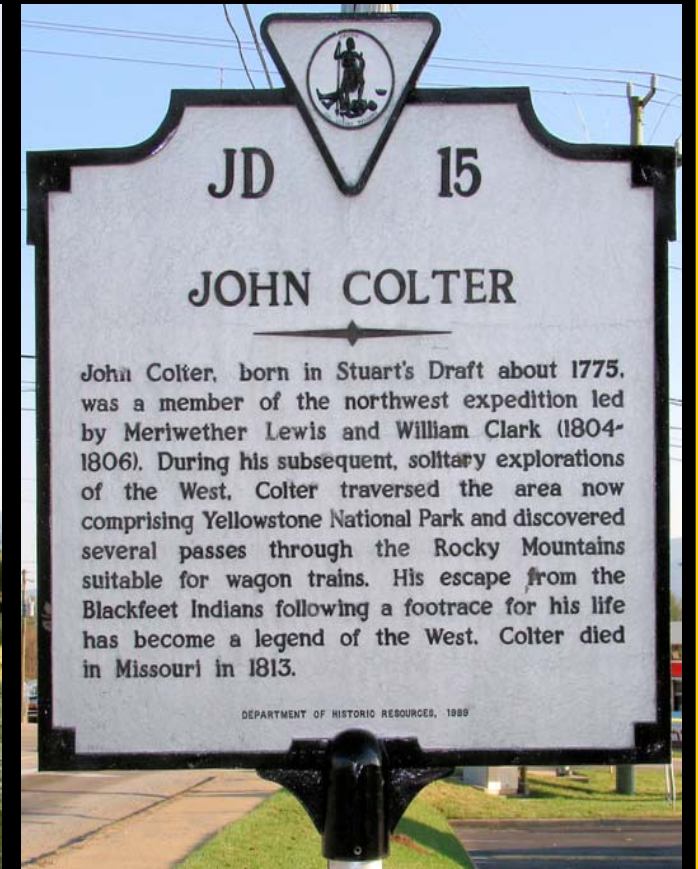
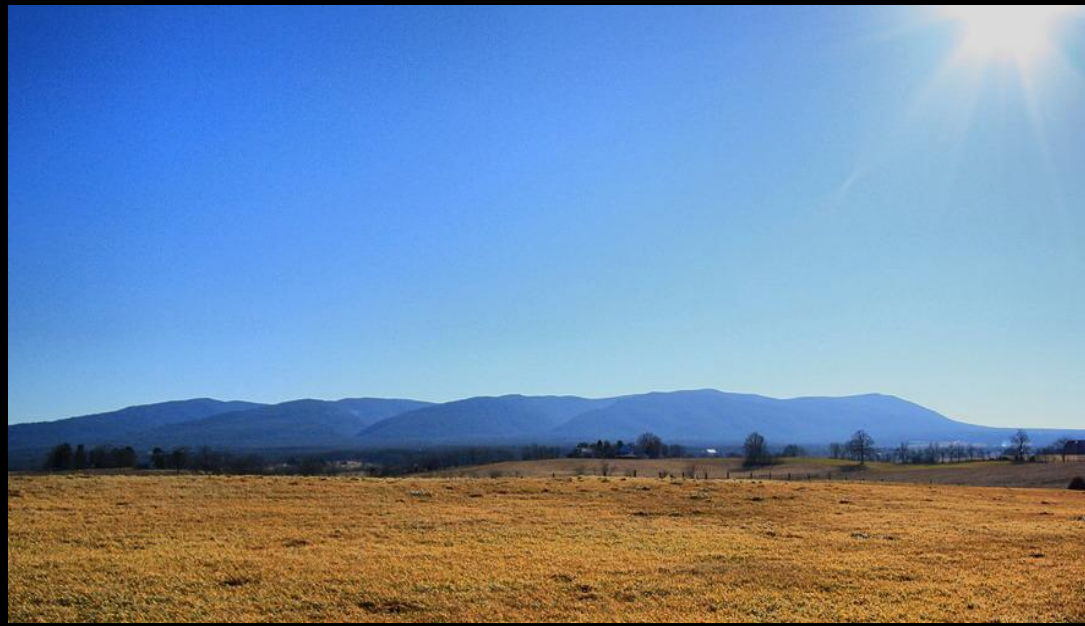




Colter Farm is the birthplace of John Colter, explorer with the Lewis and Clark Expedition and the discoverer of the area now comprising Yellowstone National Park. This classic historic home, built c.1780, is situated on 27 beautiful acres with mountain and pastoral views. This home has 4 bedrooms, 4 bathrooms, 5 fireplaces, hardwood and heart pine floors, and Geothermal high velocity HVAC system. Mature landscaping, gardens, orchards, brick and flagstone patios, walkways, and lush pastures for horses. Dependencies include a guest cottage and 3 bay pole barn. Conveniently located, close to schools, shopping and hospitals. Only 30 minutes from Charlottesville and Lexington, and 15 minutes from Staunton. Bed and Breakfast potential.









VIRGINIA ESTATES

VIRGINIA'S FINEST REAL ESTATE

Kurt Vogelsang 434-409-0750