

"Farm & Transitional
Real Estate Specialists
Since 1930"

800.424.2324

www.halderman.com

Real Estate

205 Acres

FOR SALE

Merrillville, Indiana

**ZONED: C-5 OFFICE &
RESEARCH AND R-2 SINGLE
FAMILY RESIDENTIAL**



**205 TOTAL ACRES
ZONED: C-5 OFFICE &
RESEARCH AND R-2 SINGLE
FAMILY RESIDENTIAL**

FOR MORE INFORMATION, CONTACT:
Larry Smith (219) 362-4041
PO BOX 457
LaPorte, IN 46352
Dean Retherford (765) 296-8475
1302 S 900 E
Lafayette, IN 47905

800.424.2324
www.halderman.com

HALDERMAN
REAL ESTATE
SERVICES

For more information, contact:

Larry Smith
PO BOX 457
LaPorte, IN 46352
(219) 362-4041

Dean Retherford
1302 S 900 E
Lafayette, IN 47905
(765) 296-8475

HALDERMAN
REAL ESTATE
SERVICES

800.424.2324
www.halderman.com

PROPERTY INFORMATION

205+/- ACRES

WILL DIVIDE

LOCATION

Northwest corner of 93rd Avenue and Broadway (State Highway 53). Also has considerable frontage on both 93rd Avenue and Merrillville Road, Merrillville, Lake County, Indiana.

LAND

Approximately 205 +/- acres, 2,000 feet of frontage on Broadway, 2,800 feet of frontage on 93rd Avenue, 1,320 feet of frontage on Merrillville Road. All are curbed, asphalt surfaced public roads maintained by the Town of Merrillville.

TOPOGRAPHY

Level to Gently Rolling

ZONING

C-5, East Portion; R-2, West Portion

WATER

Indiana American Water Company

SANITARY SEWER

Merrillville Conservancy District

ELECTRIC

Electricity provided by NIPSCO.

ECONOMIC DEVELOPMENT INFO

Call Town of Merrillville, Planning & Building Administrator, Mabel Gemeinhart, (219) 769-3631 or Lake County Planning Commission Director, Ned Kovacevich (219) 755-3700.

SURROUNDED BY

Homes to northwest, apartments to the south, several medical business and Hospital northeast. Many other commercial properties lie along Broadway.

SOILS

Elliott silt loam and Pewamo silty clay loam

SCHOOLS

Merrillville Schools

REAL ESTATE TAXES

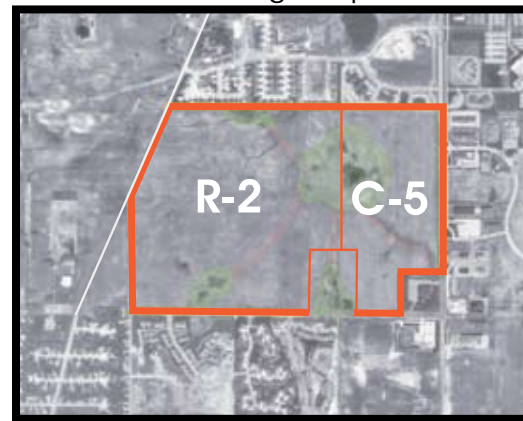
Estimated at \$6,450.00 per year

MORE INFORMATION

For questions regarding this property, please contact:

Larry Smith 219.362.4041 or Dean Retherford 765.296.8475

Zoning Map



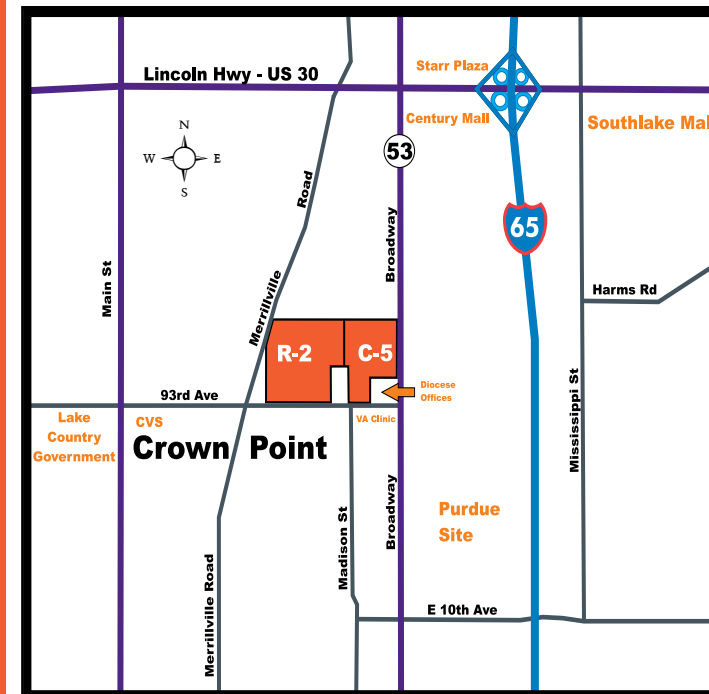
Soils Map



El=Elliott silt loam
Pc=Pewamo silty clay loam

PROPERTY MAPS

Area Map



State Map



Aerial Map



HALDERMAN
REAL ESTATE
SERVICES

800.424.2324
www.halderman.com