

***207 +/- Acres • Rare “Old Florida”  
Plantation Ranch • Okeechobee County***

- *Access and Frontage on Old Kissimmee River*
- *Surrounded by State Preserve lands*
- *Horses, Pasture, Recreation, Hunting, Fishing*
- *Scattered Oak Hammocks, Cabbage Palms*
- *Wildlife Habitats, Deer, Turkey, Wild Hogs, Quail, Dove, Duck*



**SAUNDERS**  
REAL ESTATE

*Land • Commercial • Conservation • Property Management*  
114 N. Tennessee Ave  
3rd Floor  
Lakeland, FL 33801

***New Price July 2011***

Toll Free: 1-877-518 LAND • [www.saundersrealestate.com](http://www.saundersrealestate.com)

***207 +/- Acres Total  
Rare “Old Florida” Plantation Ranch  
Okeechobee County • FL***

**Old Kissimmee Ranch  
Okeechobee County • Florida**

***207 +/- Acres  
Old Florida Plantation Ranch***

***New Price  
July 2011***



*Land • Commercial • Conservation • Land Management*  
114 N. Tennessee Ave, 3rd Floor • Lakeland, FL 33801  
Phone: 863-648-1528 • Toll Free: 1-877-518 LAND  
**[www.saundersrealestate.com](http://www.saundersrealestate.com)**



**SAUNDERS**  
REAL ESTATE



**Acres:** 207 +/- Total Acres  
with plantation home

**Price:** ~~\$1,995,000~~

**NEW PRICE \$1,325,000 - July 2011**

**Location:**

17000 NW 68th street

Unincorporated Okeechobee County, FL

**Uses:** Ranch, recreation, hunting, fishing

**Water:** R/O System

**Irrigation/Water:** Wells

- Yard has a multi-zone sprinkler system
- Pasture has Artesian well, ponds and internal ditches

**STR & Parcel No:** 26-36-33;

1-26-36-33-0A00-00003-A000;

1-26-36-33-0A00-00003-0000

Located in the Platts Bluff area of Okeechobee, just 12 minutes northwest of downtown Okeechobee, and off of SR 70, at the end of Platt's Bluff Road.

**Driving Directions:**

- From SR 70, turn north on NW 128th Ave.
- From NW 128th Ave., turn west on NW 56th St.
- Take NW 56th St. until it bends around and becomes NW 160th Ave.
- From NW 160th Ave., turn west on NW 68th St.
- Property is at the end of NW 68th St. at gate with sign: "Old Kissimmee Ranch"

**Note:**

- Furnishings, cattle pens and squeeze, tractor, implements, truck, boat, ATVs, grills and other items are available for purchase at additional price.
- Adjacent 150+ acres with 1 +/- mile of river frontage available for purchase separately.

# 207 +/- Acres • Rare "Old Florida" Plantation Ranch • Okeechobee County

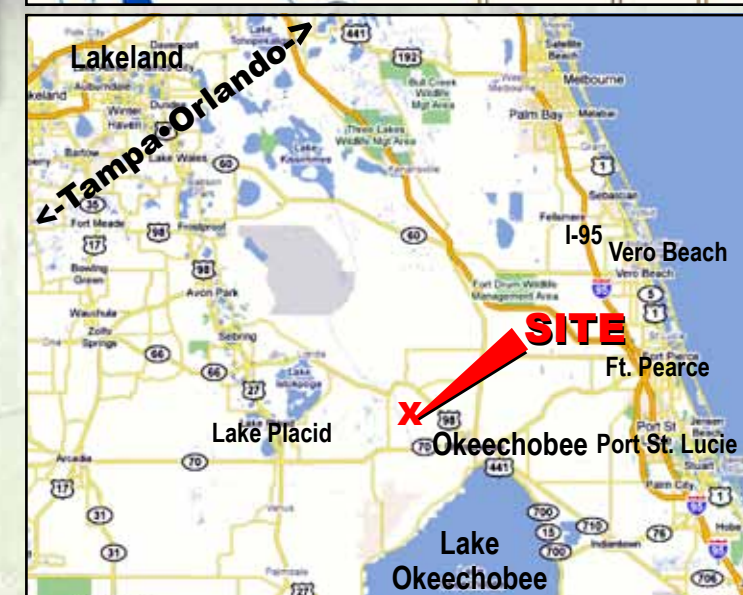
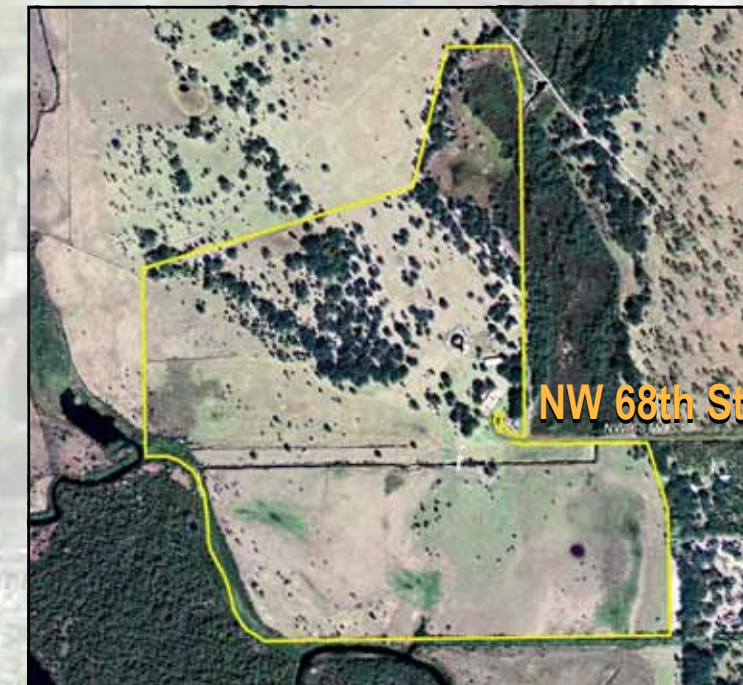


**Wildlife Habitats, Deer, Turkey, Wild Hogs, Quail, Dove, Duck**



**Access & Frontage on Old Kissimmee River**

**Horses, Pasture, Recreation, Hunting, Fishing**



**Old Kissimmee Ranch** is an irreplaceable "Old Florida" plantation ranch situated on 207 +/- acres of pristine productive pastures, oak hammocks, cabbage palms, swamps, and ponds, with access and frontage on the Old Kissimmee River. The property is a short distance from Lake Okeechobee by boat. Private and quiet, the property is surrounded by several thousand acres of State Preserve lands with development restrictions. The acreage is fenced and cross-fenced with a variety of game, including pigs, deer, turkeys, alligators, and many different bird species.

The property is a working cattle ranch and the 7,000 +/- sq. ft. plantation estate home features 6 bedrooms, each with private baths, and cedar closets, a large office, 2-car garage, dining room, oversized eat-in kitchen, a 1,400 +/- square foot living area with fireplace, walk-in cooler, 4 separate A/C units, reverse osmosis water system, six zone sprinkler systems with automatic timer. A 6,000 +/- square foot barn with workshop is included.

©2011 Coldwell Real Estate Corporation. Coldwell Banker Commercial® is a registered trademark licensed to Coldwell Banker Real Estate Corporation. An Equal Opportunity Company. Each Office is Independently Owned And Operated. Every attempt is made to provide accurate information on this property as possible, however, COLDWELL BANKER COMMERCIAL SAUNDERS REAL ESTATE (CBCSRE) does not guarantee the accuracy. Buyer should rely entirely on their own research, inspection of property, and records. ©2011 Coldwell Banker Commercial Saunders Real Estate, All Rights Reserved, Worldwide: All content is the property of CBCSRE. You may not copy or use this material by any means, in any form, or create a derivative work, without written consent from CBCSRE.