

Heritage Select Investments  
1619 Sam Houston Avenue  
Huntsville, Texas 77340  
(903) 729-2333  
(936) 661-9247  
calvin@txlands.net

June 8, 2011

## JASPER COUNTY Land for Sale

### BEECH GROVE OAKS SUBDIVISION

www.txlands.net

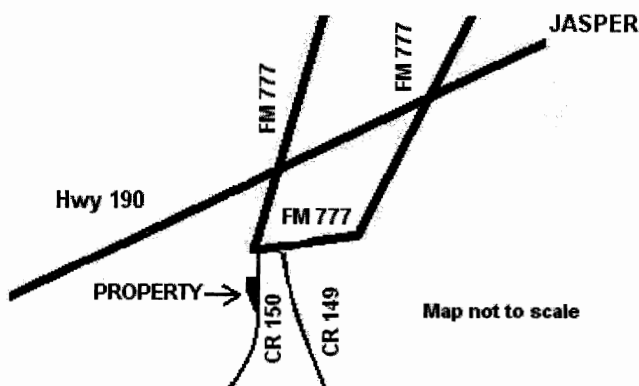
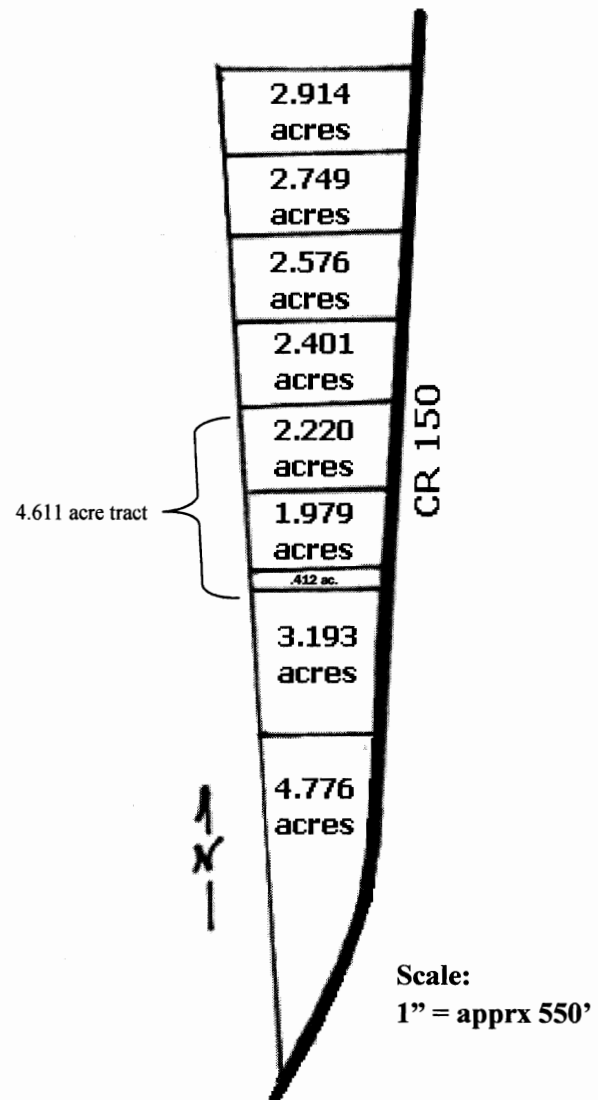
Property located near the Beech Grove area, 8 miles southwest of Jasper, Texas. Most of the pine has been removed. Hardwoods throughout the property. (Oaks, magnolia, holly, yaupon, etc., plus a few dogwoods and pines.) Electricity on or near the property. Gently rolling, with deer. 1.979 to 4.776 acre tracts available on paved County Road 150.

2.914 acre tract	SOLD	
2.749 acre tract	SOLD	
2.576 acre tract	SOLD	
2.401 acre tract	SOLD	
4.611 acre tract	\$22,500 cash	\$25,000 term
3.193 acre tract	SOLD	
4.776 acre tract	SOLD	

Prices and availability subject to change

#### OWNER FINANCE TERMS:

10% DOWN, 10.75% interest, up to 15 years.  
Will consider less down



From Jasper, travel west on US Hwy 190 past 1st FM 777 intersection (at airport turnoff) just outside of town. Continue west on Hwy 190 about 5 miles to 2nd FM 777 intersection. Turn left (south) on Hwy 777 and travel 1.5 miles to property on right (Note: Hwy 777 turns 90 degrees east at intersection of FM 777 & CR 150; stay straight on CR 150 about .5 miles from FM 777.)