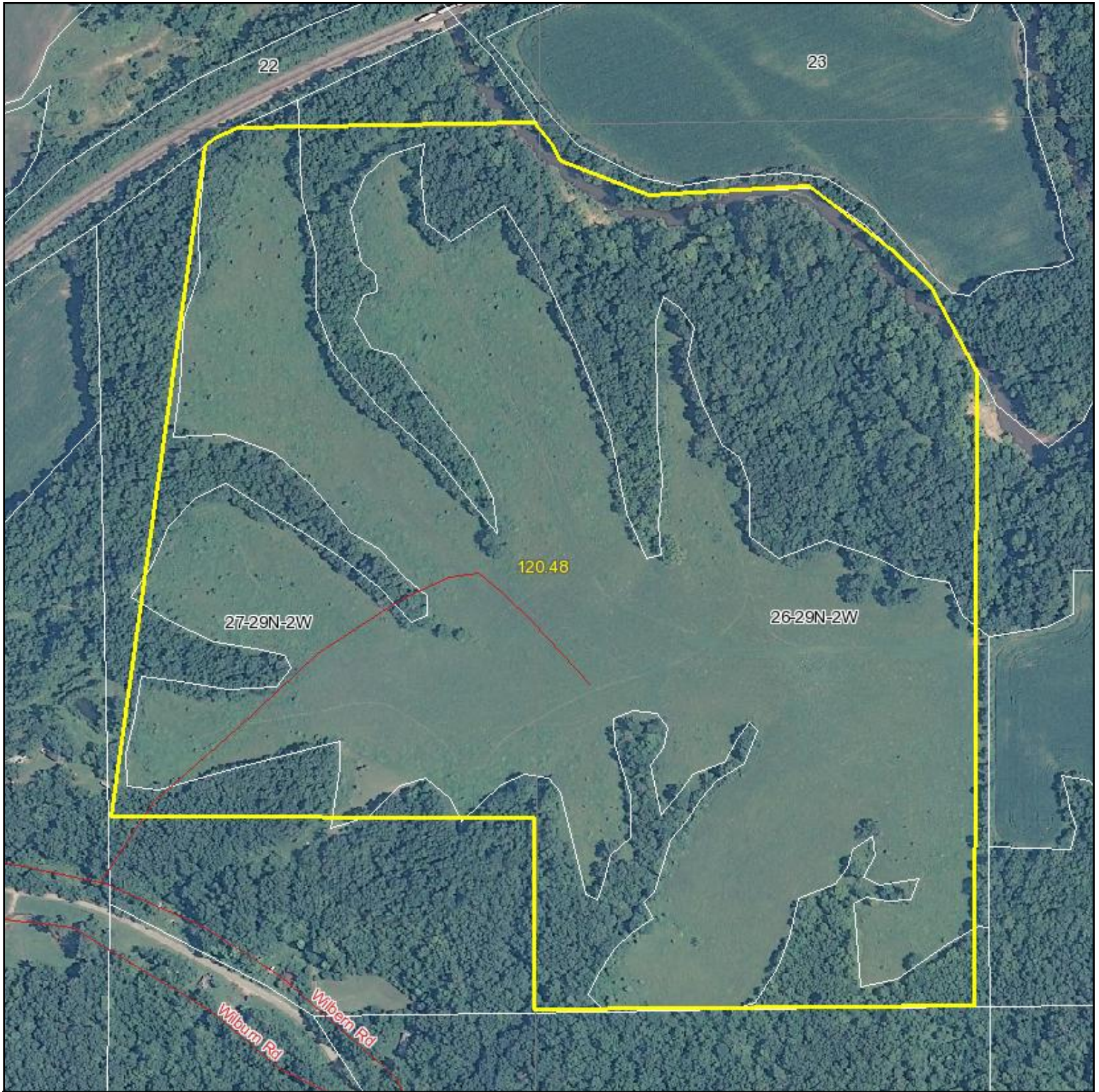


# Aerial Map



Capital  
Agricultural  
Property  
Services, Inc.

Maps provided by:



©AgriData, Inc. 2011

[www.AgriDataInc.com](http://www.AgriDataInc.com)

**26-29N-2W**  
**Marshall County**  
**Illinois**

map center: 40° 56' 56.19, 89° 18' 52.86

scale: 5565



6/7/2011

Field borders provided by Farm Service Agency as of 5/21/2008. Aerial photography provided by Aerial Photography Field Office. PLSS provided