



GREAT SOUTHERN
Land



South Butler County 28 Acres #10-005
28+/- Acres in Butler County, AL
Offered for \$98,000 (\$3,500/acre)

This beautiful property for sale in Butler County, Alabama, is located approximately seven miles south of Greenville on the east side of historic State Highway 31. Large pecan trees are located throughout the entire property. The land for sale has been well manicured and really looks great. There are many gorgeous home sites located throughout the property and a nice lake site is located in the center of the tract. There is approximately 900 feet road frontage along Highway 31 with utilities and water along the highway.

Located in a good area of Butler County, the property for sale has a rural country setting, but is only a few minutes from Interstate 65 and Greenville, one of the fastest growing cities in Alabama. This property would be ideal for someone looking for a beautiful place to build a house, or have some horses or cows, and with the great location, abundant highway frontage, and numerous homesites, this property also has outstanding potential as development land.

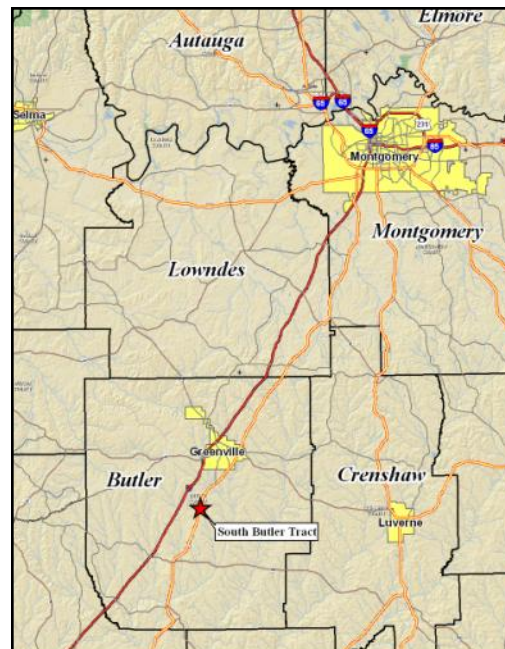
www.GreatSouthernLand.com



Great
Southern
Land

For a tour or more information call:
Bill Atkins, Listing Agent
334-567-0924 ext. 207
334-399-9397 cell
batkins@knology.net

Fletcher Majors, ALC, Broker
334-567-0924 ext. 205
334-328-9278 cell
Fletcher@GreatSouthernLand.com





1,174 ft. +/-

912 ft. +/-

27.7 Ac. +/-

1,143 ft. +/-

841 ft. +/-

405 ft. +/-

172 ft. +/-

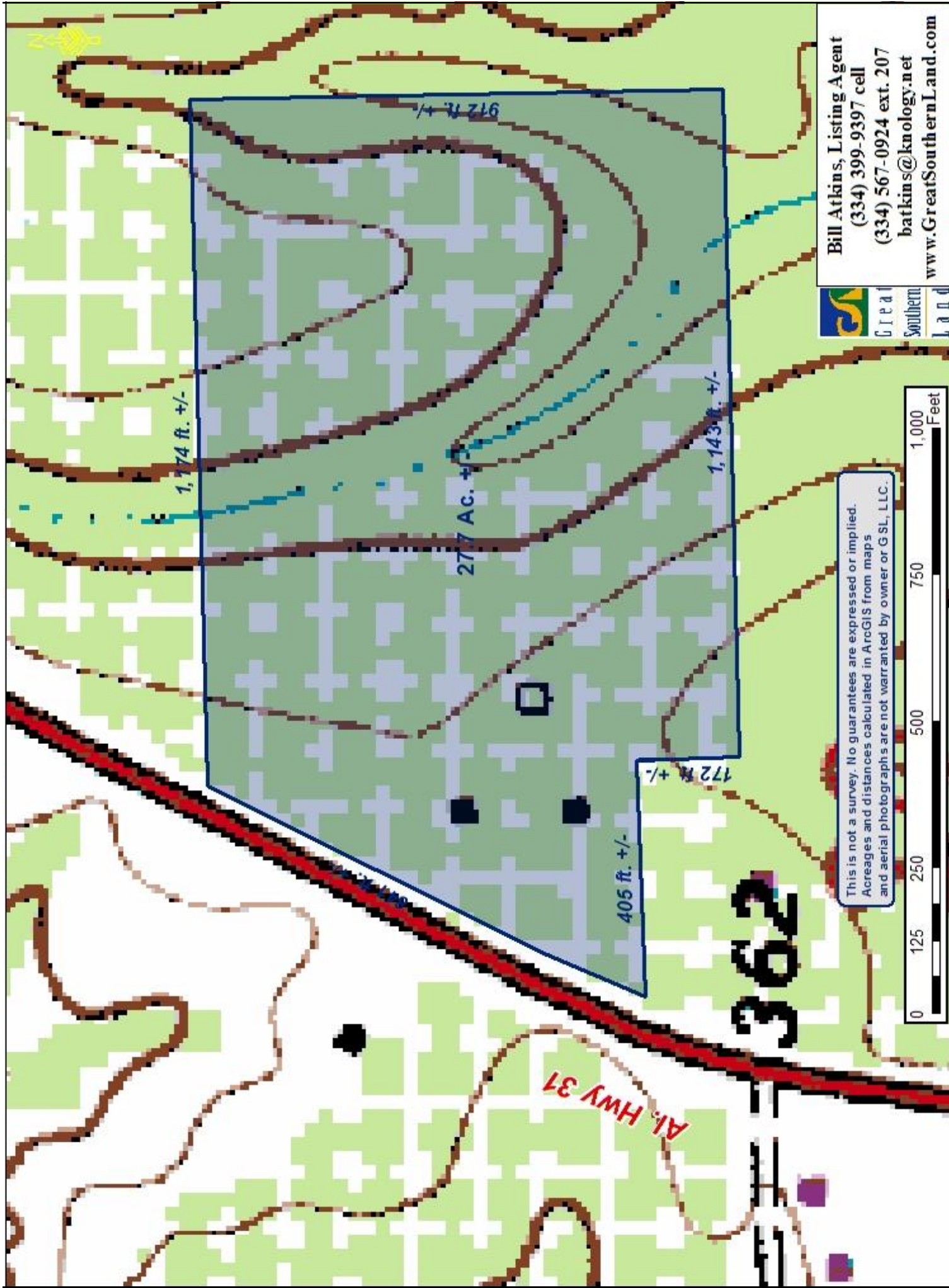
AL. HWY 31



Bill Atkins, Listing Agent
(334) 399-9397 cell
(334) 567-0924 ext. 207
batkins@knology.net
www.GreatSouthernLand.com

This is not a survey. No guarantees are expressed or implied.
Acreages and distances calculated in ArcGIS from maps
and aerial photographs are not warranted by owner or G S L, LLC.



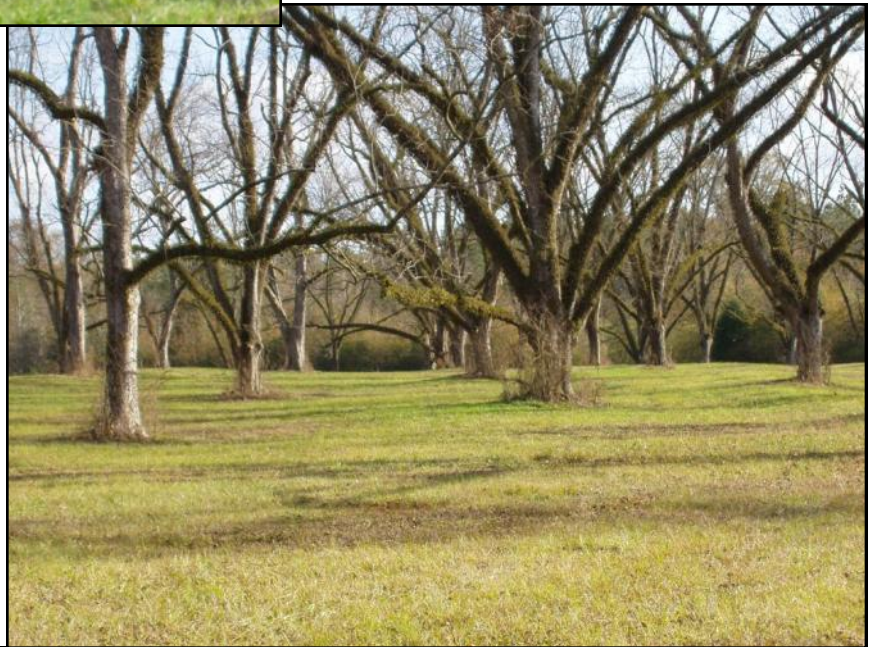


Bill Atkins, Listing Agent
(334) 399-9397 cell
(334) 567-0924 ext. 207
batkins@knology.net
www.GreatSouthernLand.com



**View of Pecan
Trees**

**Additional
view of Pecan
Trees**



**Paved road
frontage on
Highway 31**