

Weir Place Plaza Land For Sale

2650 & 2660 Weir Place (Potential Retail)

Chester, Virginia 23831



Features

- ❑ **2.94± Acres**
- ❑ **Asking Price: \$800,000**
- ❑ **Zoned C-3**
- ❑ **Easy Access to I-95**
- ❑ **Traffic Counts:**
 - 21,000 VPD on Jeff Davis Hwy (Rte.1)**
 - 37,000 VPD on West hundred Rd. (Rte.10)**

Demographics

	<u>1 Mile</u>	<u>3 Miles</u>	<u>5 Miles</u>
Total Population	3,876	35,182	73,237
Median HH Income	\$68,642	\$75,039	\$76,322
Daytime Population	2,777	11,368	24,768



For additional information, please contact:

Jim McVey **804.433.1824**

JMcvey@CommonwealthCommercial.com

Joe Buhrman **804.433.1811**

JBuhrman@CommonwealthCommercial.com

7130 Glen Forest Drive, Suite 110, Richmond, VA 23226

Phone: 888.346.4966

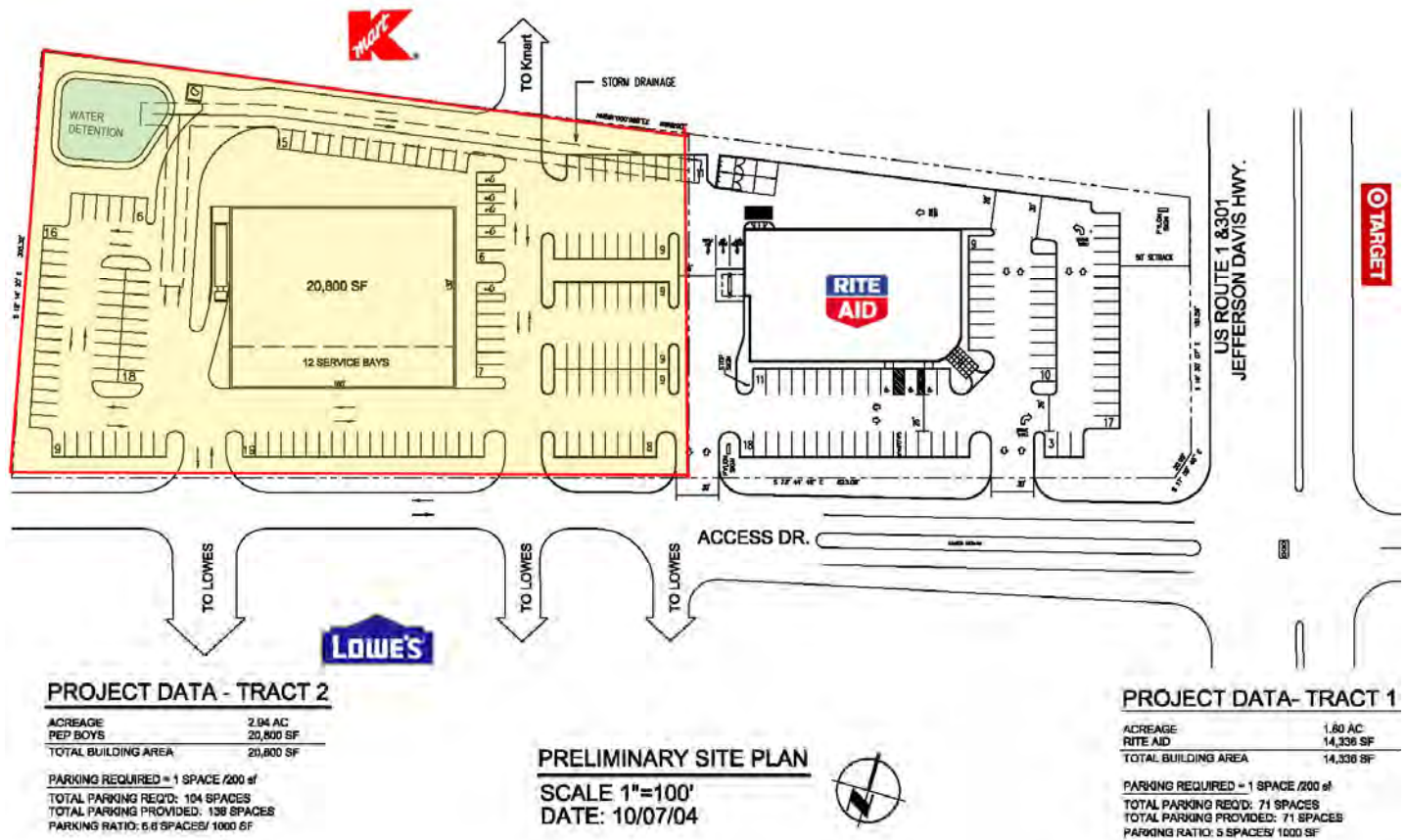
Fax: 80346.5901

Mailing Address: P. O. Box 71150, Richmond, VA 23255

www.CommonwealthCommercial.com

Commonwealth Commercial Partners, Inc. represents the Owner of this property. Information contained herein, is deemed reliable but not guaranteed.

Preliminary Site Plan



Aerial

