

159 +/- Acres

FM 1652—Grand Saline, TX 75140

FOR SALE

\$473,000

• **UTILITIES**
Outside City Limits

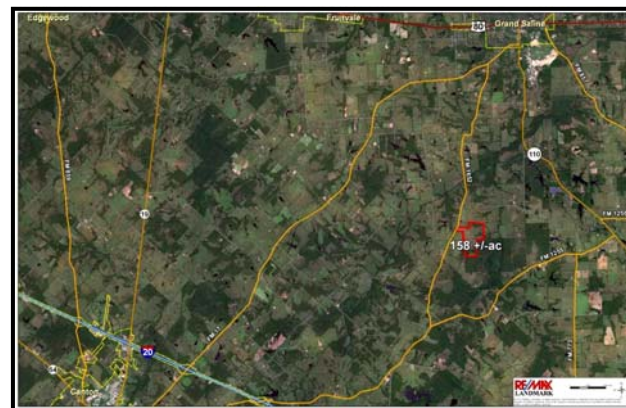
Co-op water

Co-op electric

• **MINERALS**
Seller believes to own 100% of the minerals, will agree to convey what he owns

• **SCHOOLS**
Grand Saline ISD

PEACEFUL RANCH IN THE HEART OF EAST TEXAS



DIRECTIONS

From Dallas US Hwy 80 or I-20 50 mi past Canton to FM 1255, N 5 mi to FM 1652 Left approx. 1 mi to Property on Right, SOP



RE/MAX Landmark
113 N. Frances Street
Terrell, TX 75160

www.frankrobertslandteam.com
www.frankroberts.remaxtexas.com



Brought to You Exclusively By
Frank J. Roberts, ALC

REALTOR, Owner

OFFICE: 972-524-0689

FAX: 972-551-2525

frank@rmlandmark.com



159 +/- Acres

FM 1652—Grand Saline, TX 75140

Frank Roberts
LAND TEAM

\$473,000

- **UTILITIES**

Outside City Limits

Co-op water

Co-op electric

- **MINERALS**

Seller believes to own 100% of the minerals, will agree to convey what he owns

- **SCHOOLS**

Grand Saline ISD



Beautiful East Texas Ranch with rolling hills, Bermuda pastures, mature hardwood trees, and small frame rent house suitable for weekend retreat. Good fences, grass, and cattle pens. Great location for your dream home. Seller believes to own 100% of minerals, will agree to convey what he owns



159 +/- Acres

FM 1652—Grand Saline, TX 75140

Frank Roberts
LAND TEAM

\$473,000

- **UTILITIES**

Outside City Limits

Co-op water

Co-op electric

- **MINERALS**

Seller believes to own 100% of the minerals, will agree to convey what he owns

- **SCHOOLS**

Grand Saline ISD



Elevation offers panoramic views, and there is plenty of hardwood timber

159 +/- Acres

FM 1652—Grand Saline, TX 75140

Frank Roberts
LAND TEAM

\$473,000

- **UTILITIES**

Outside City Limits

Co-op water

Co-op electric

- **MINERALS**

Seller believes to own 100% of the minerals, will agree to convey what he owns

- **SCHOOLS**

Grand Saline ISD



Nice lake deep in the woods