

ZONE A

Creek

151
Salt

Foley

Branch

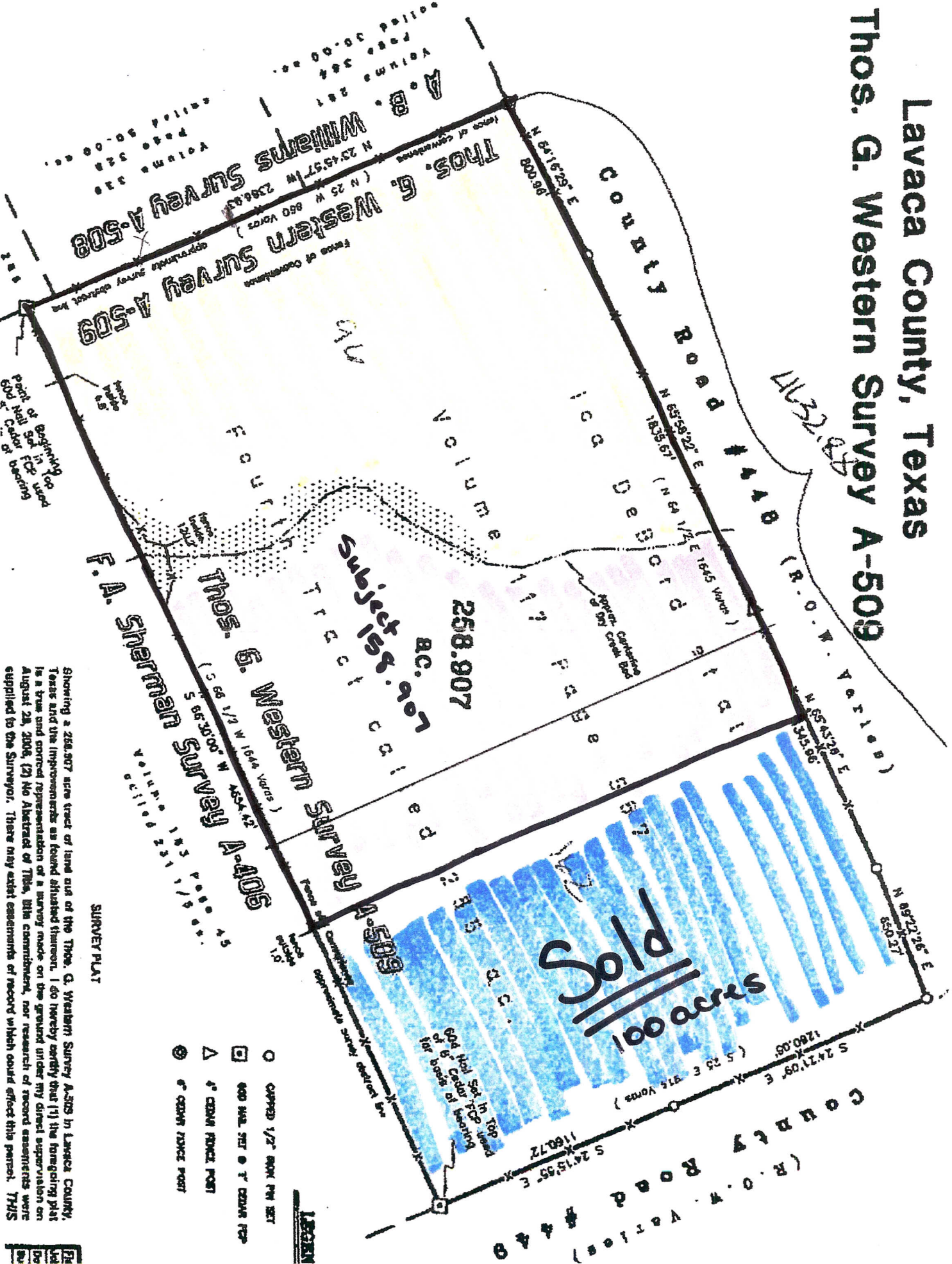
EZZELL

ROUTE

531

Lavaca County, Texas

County Road #449 (R.O.W. Varies)



SURVEY PLAT

Showing a 256,307 acre tract of land out of the 1700s. G. Western Survey A-302 in Lincoln County, Texas and the improvements as found situated thereon. I do hereby certify that (1) the foregoing plat is a true and correct representation of a survey made on the ground under my direct supervision on August 2nd, 2006, (2) no Abstract of Title, title commitment, nor research of record assessments were supplied to the Surveyor. There may exist assessments of record which could affect this parcel. 7745

प्राप्त