

"Exhibit B"

ROADWAY EASEMENT

A 33.00 foot easement for ingress, egress and utility purposes
centered over and across an existing road located in those parts of:

**The Northwest Quarter of Section 5,
Township 138 North, Range 33 West.**

All in Wadena County, Minnesota
being 16.5 feet on each side of the following centerline:

For Course details see "Exhibit A"

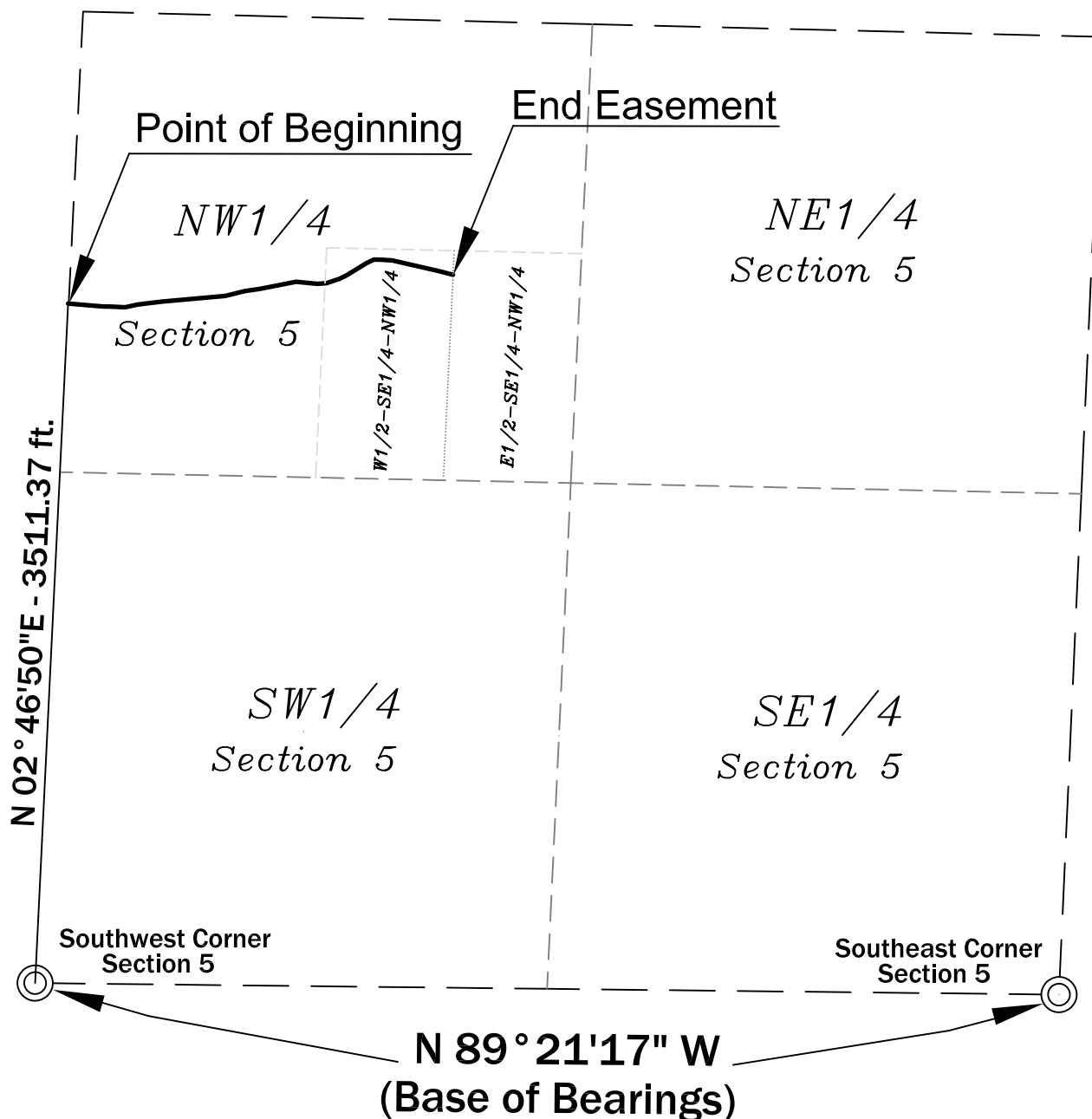


Exhibit A

A 33 foot wide easement for ingress, egress and utility purposes centered over and across an existing road in the Northwest Quarter of Section 05, Township 138 North, Range 33 West, Wadena County, Minnesota, being 16.5 feet on each side of the following described centerline:

Commencing at the Southwest Corner of said Section 05, Township 138 North, Range 33 West; thence North 02 Degrees 46 Minutes 50 Seconds East 3511.37 feet; (assuming a line between the Southeast Corner of Section 05, Township 138 North, Range 33 West and the Southwest Corner of Section 05, Township 138 North, Range 33 West bears North 89 Degrees 21 Minutes 17 Seconds West) to the point of beginning;

thence South 85 Degrees 08 Minutes 20 Seconds East for 176.50 feet,
thence South 89 Degrees 27 Minutes 34 Seconds East for 43.39 feet,
thence South 87 Degrees 13 Minutes 19 Seconds East for 74.78 feet,
thence North 78 Degrees 04 Minutes 58 Seconds East for 67.38 feet,
thence North 82 Degrees 59 Minutes 24 Seconds East for 125.44 feet,
thence North 84 Degrees 54 Minutes 57 Seconds East for 328.86 feet,
thence North 76 Degrees 02 Minutes 13 Seconds East for 103.69 feet,
thence North 81 Degrees 39 Minutes 17 Seconds East for 79.41 feet,
thence North 78 Degrees 43 Minutes 45 Seconds East for 188.90 feet,
thence South 84 Degrees 26 Minutes 46 Seconds East for 111.42 feet,
thence North 85 Degrees 50 Minutes 15 Seconds East for 47.30 feet,
thence North 71 Degrees 36 Minutes 46 Seconds East for 71.53 feet,
thence North 62 Degrees 41 Minutes 35 Seconds East for 41.47 feet,
thence North 58 Degrees 44 Minutes 07 Seconds East for 117.69 feet,
thence North 63 Degrees 20 Minutes 06 Seconds East for 42.75 feet,
thence South 88 Degrees 40 Minutes 55 Seconds East for 37.43 feet,
thence South 85 Degrees 55 Minutes 20 Seconds East for 57.32 feet,
thence South 77 Degrees 10 Minutes 51 Seconds East for 256.49 feet,
thence South 74 Degrees 42 Minutes 12 Seconds East for 66.46 feet

to the East line of the West One Half of the Southeast Quarter of the Northwest Quarter in Section 05, Township 138 North, Range 33 West and there said easement terminating. The sidelines of said easement to be lengthened or shortened to meet and terminate at said east line.

This instrument was drafted by: Shawn Sunnarborg, Potlatch Minnesota Timberlands, LLC, 105 Arch Street, Cloquet, MN 55720 218-879-0436

Note: Bearing and distances were provided by Potlatch Minnesota Timberlands, LLC