

66+/- Acres

Roy Warren Parkway—Greenville, TX

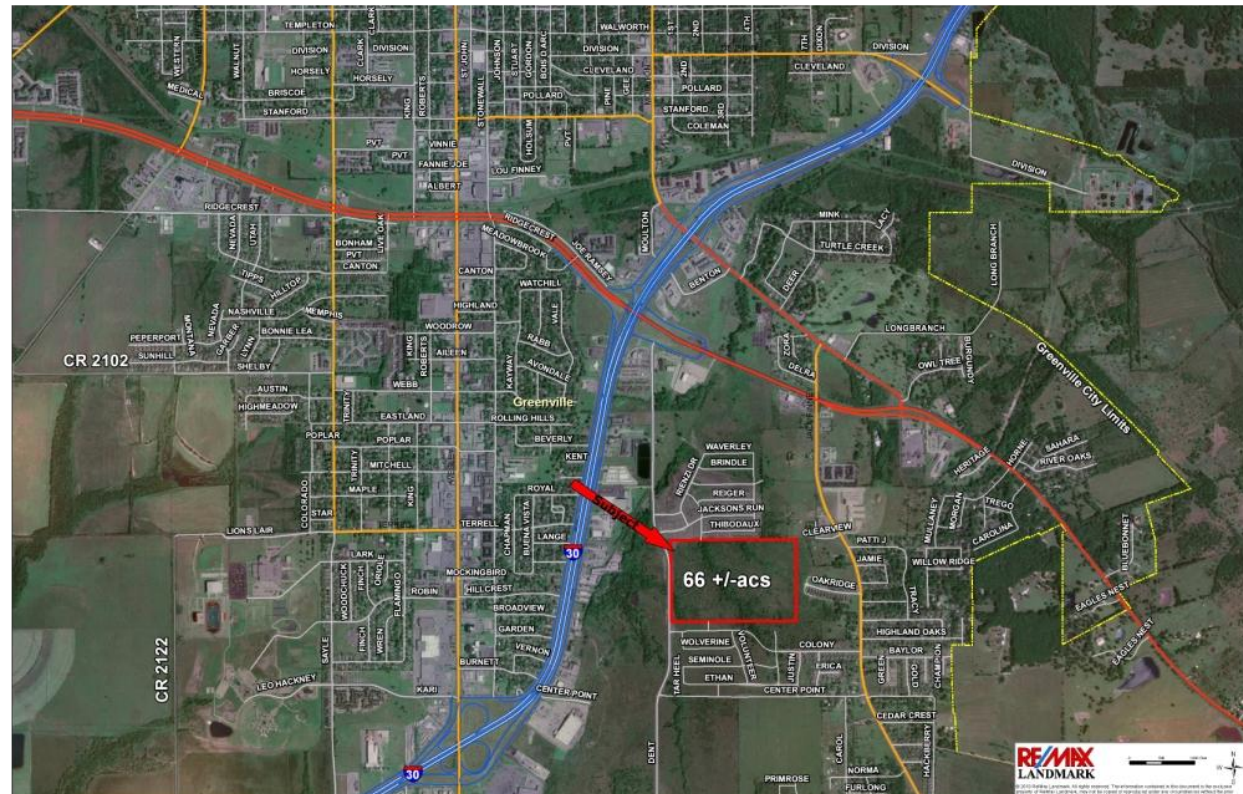
FOR SALE

\$232,000

LARGE 66 +/- AC. TRACT ON MAJOR THOROUGHFARE

DIRECTIONS

From I-635 in Dallas take I-30 39 miles to Greenville. Exit 94 to Frontage Road to Roy Warren Parkway Right, Property on left. Sign on Property



RE/MAX Landmark
113 North Frances Street
Terrell, TX 75160

www.frankrobertslandteam.com
www.frankroberts.remaxtexas.com



Brought to You Exclusively By
Frank J. Roberts, ALC

REALTOR, Owner

OFFICE: 972-524-0689
FAX: 972-551-2525
frank@rmlandmark.com



66+/- Acres

Roy Warren Parkway—Greenville, TX

Frank Roberts
LAND TEAM

\$232,000

LOCATION
DESCRIPTION
Acreage
Pasture

ZONING INFO:
Residential

UTILITIES:
City Water
City Sewer

TOPOGRAPHY:
Level

CROPS/GRASSES:
Native

FINANCING:
Cash
Conventional



Great opportunity to own this 66 +/- acres within the city limits of Greenville, surrounded by SFR subdivisions. Located on a major thoroughfare and priced to sell!

