



Guntersville Tract #50-001
557.50+/- Acres in Marshall County, AL
Offered for \$1,936,224 (\$3,473/ac)

- Large timbered tract on Lake Guntersville
- Joins TVA frontage on Lake Guntersville
- Located on the north side of the Lake
- 10 to 12 mile drive to the City of Guntersville
- By water, less than 1.5 miles from the dam
- Very good hunting and recreational tract
- Suitable for large family or corporate retreat
- Could be divided into large lots with great views of the Lake
- Potential timber income

www.GreatSouthernLand.com



Great
Southern
Land

For a tour or more information call:

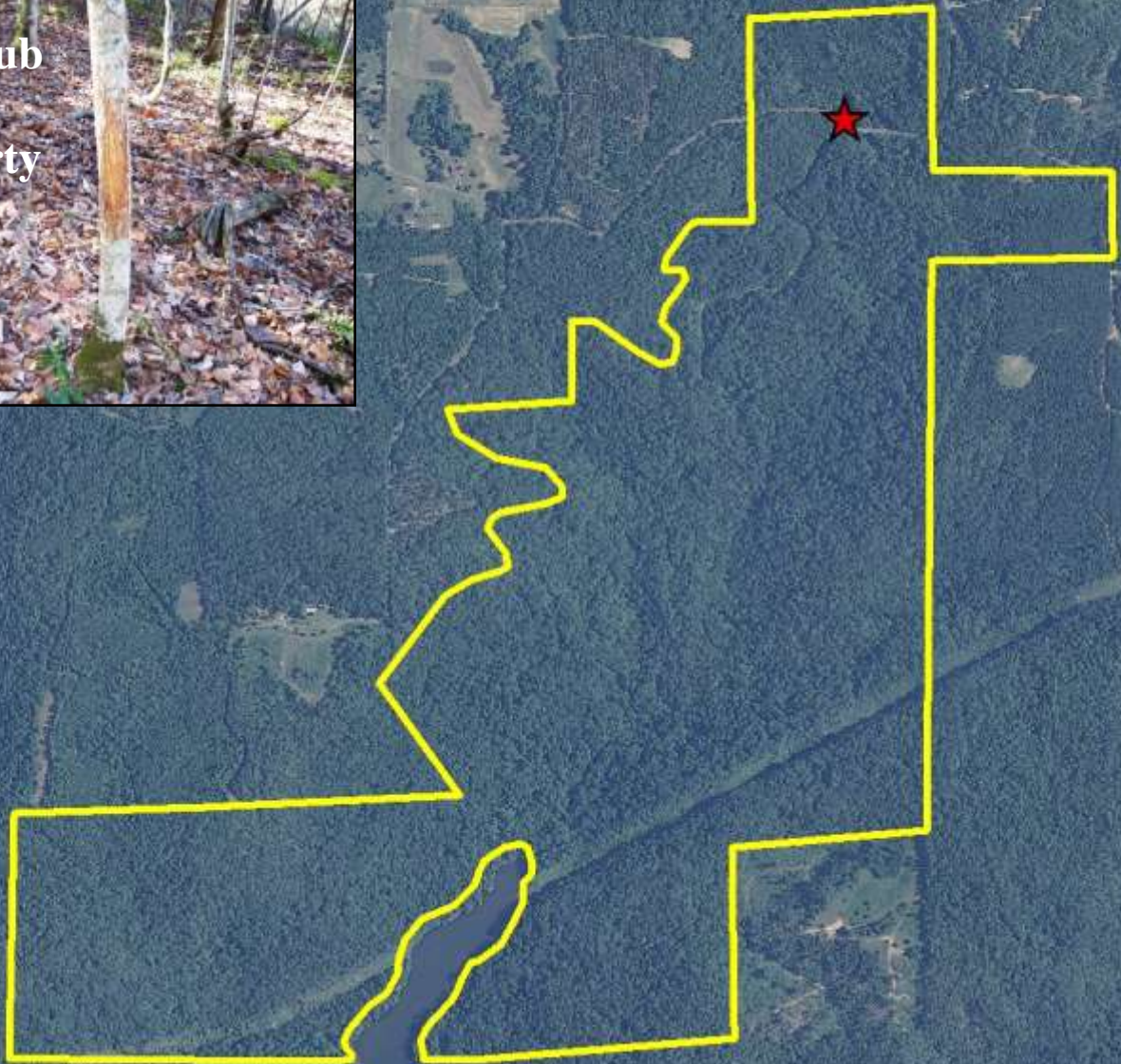
Eddie Stone, Listing Agent
205-702-4420
205-837-4466 cell
edstone@windstream.net

Fletcher Majors, ALC, Broker
334-567-0924 ext. 205
334-328-9278 cell
Fletcher@GreatSouthernLand.com



Guntersville # 50-001
557.5 ac+/- Marshall County

Deer rub
on
property

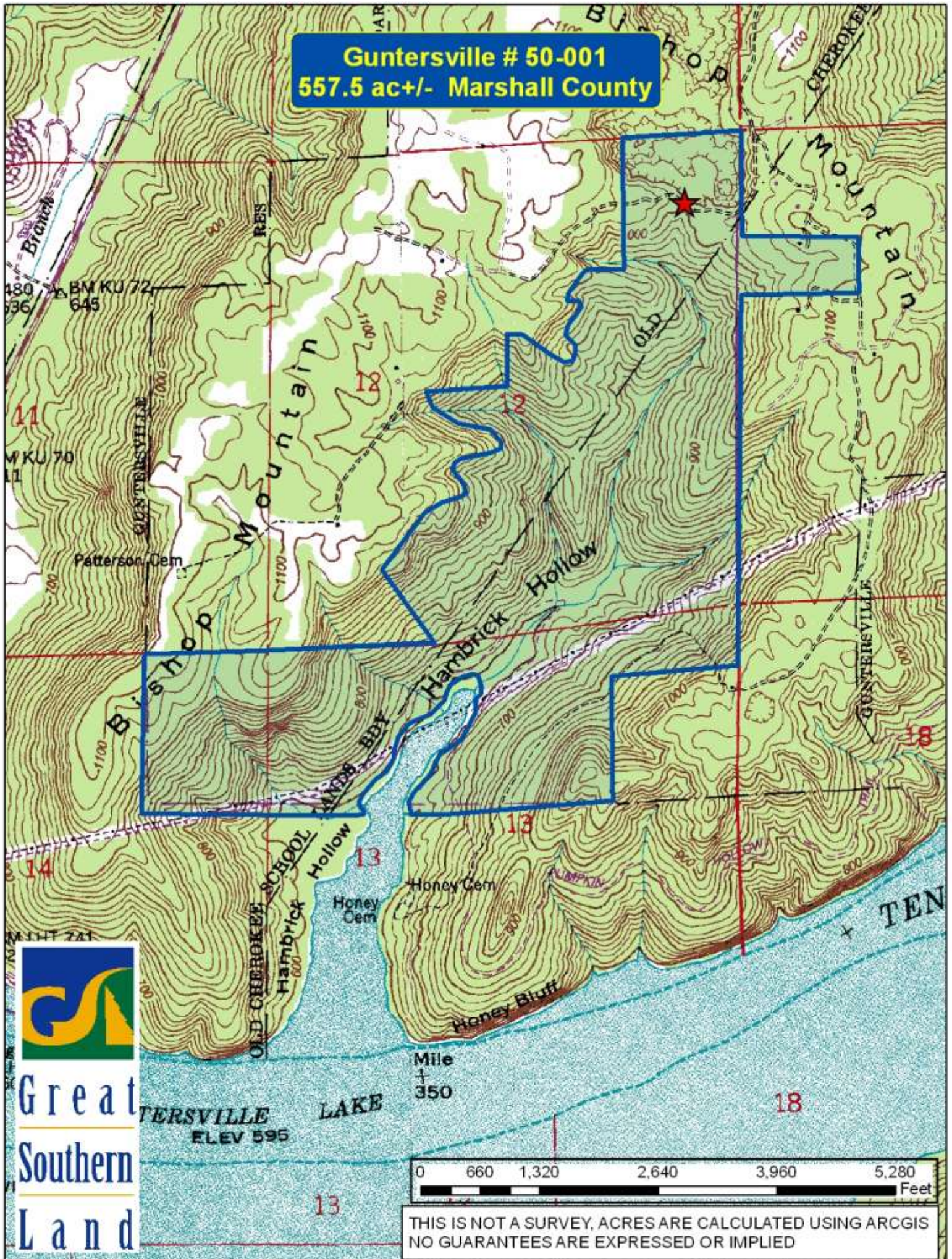


Great
Southern
Land

0 660 1,320 2,640 3,960 5,280 Feet

THIS IS NOT A SURVEY, ACRES ARE CALCULATED USING ARCGIS
NO GUARANTEES ARE EXPRESSED OR IMPLIED

Guntersville # 50-001
557.5 ac+/- Marshall County



The main photograph shows a wide view of a forested ridge under a clear blue sky. The trees are in various stages of autumn, with some showing vibrant orange and yellow leaves, while others are still green. Several power lines run diagonally across the upper portion of the image. In the bottom left corner, there is a smaller inset photograph showing a close-up view of a forest floor with tall, thin tree trunks and a dense canopy of green and yellow leaves.

A photograph of a dirt path winding through a forest with trees showing autumn foliage. In the bottom right corner, there is an inset map showing the location of the study area near Madison, Tennessee, and North Carolina State Park. The map includes major roads like I-75 and I-24, and a red line indicating the study area.

Between Guntersville & Huntsville

