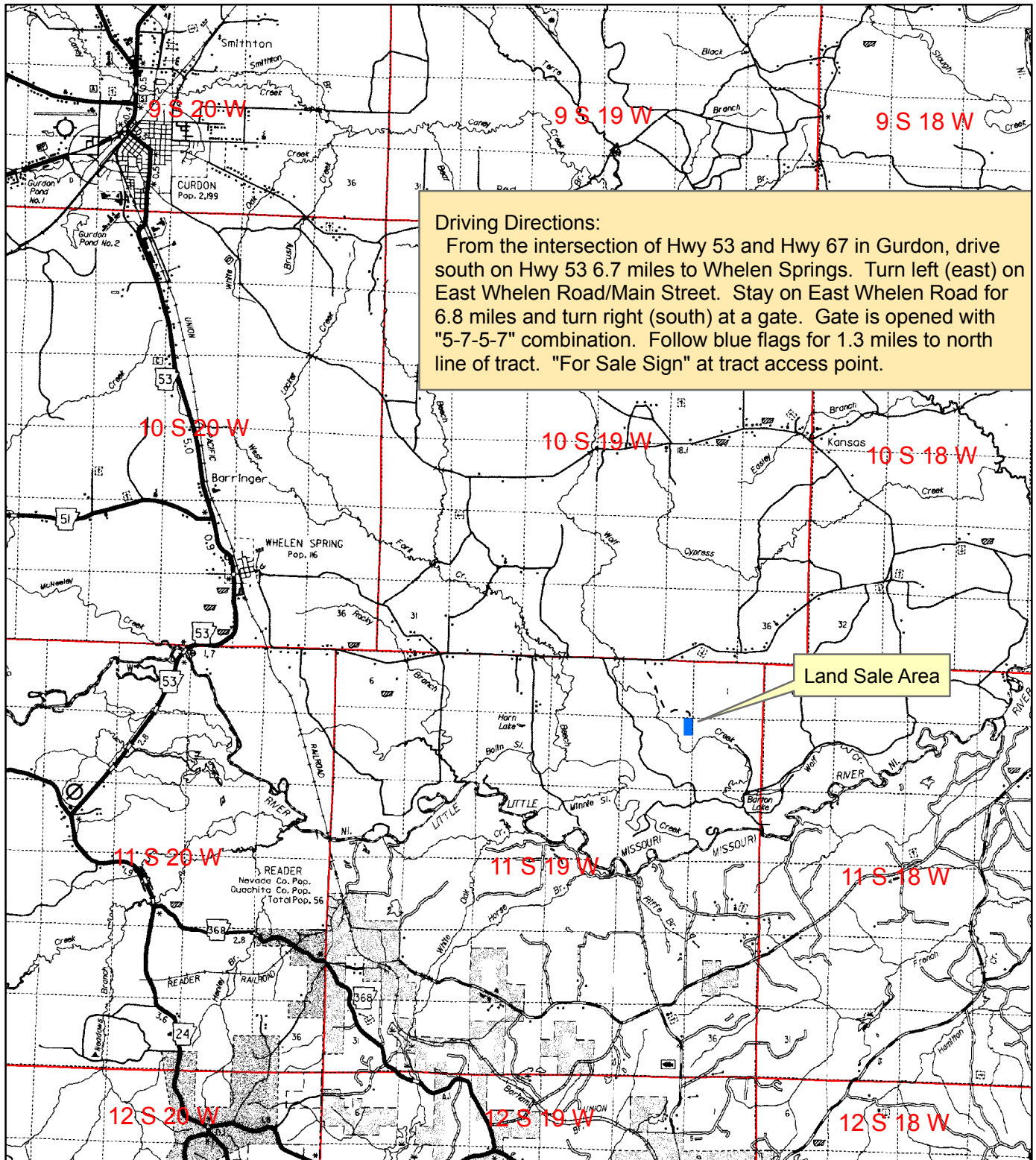


NOTICE OF LAND SALE
Wolf Creek 20 Tract (Listing #4242)
E½ of NE¼ of NE¼, Sec. 11, T11S, R19W, Clark County, Arkansas
Containing 20 acres, more or less



Driving Directions:

From the intersection of Hwy 53 and Hwy 67 in Gurdon, drive south on Hwy 53 6.7 miles to Whelen Springs. Turn left (east) on East Whelen Road/Main Street. Stay on East Whelen Road for 6.8 miles and turn right (south) at a gate. Gate is opened with "5-7-5-7" combination. Follow blue flags for 1.3 miles to north line of tract. "For Sale Sign" at tract access point.

0 0.5 1 2 3
Miles

