

Geothermal Earth Energy: The Ideal Choice

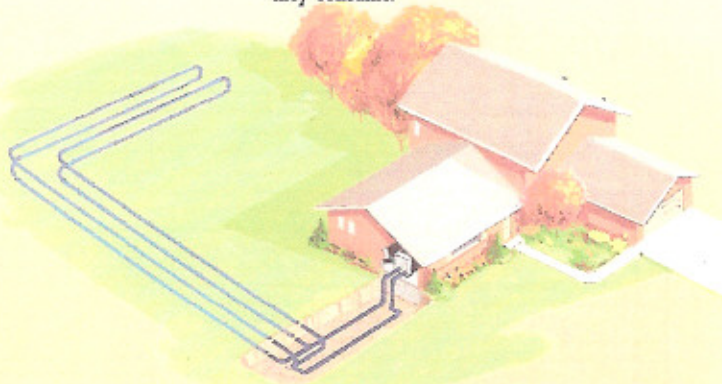
In the last 10 years, smart homeowners all over the world have discovered that geothermal (ground source) systems are ideal for heating and cooling.

Geothermal technology is ideal because it delivers what you want and what our world needs—lower operating cost, comfort, cleanliness and a better environment.

No matter where you live, the underground temperature stays relatively constant all year, even though outdoor temperatures vary widely. Geothermal systems harness that renewable, natural supply of energy...and use it for heating, air conditioning and hot water.

In winter, water circulating through a "loop" of underground pipe absorbs heat from the earth and carries it to the geothermal unit which extracts the heat, compresses it to a higher temperature, and distributes it throughout your home. In summer, the unit extracts heat from your home and transfers it back to the circulating water in the underground loop system, where it is dissipated into the cooler earth. In many locations, well water can be utilized directly, replacing the closed loop system.

Geothermal systems are extremely energy efficient since they only use electricity to power the pump, compressor and fan. These components transfer heat rather than produce it. As a result, geothermal systems use far less electricity than air-to-air heat pumps and they don't burn fuel like furnaces. In fact, they typically deliver about 3-4 times more energy than they consume.



Geothermal Benefits

- **Lower Operating Costs:** Operates more efficiently than any other type of heating and cooling system. Savings can be from 30-60%.
- **Comfort:** Constant, even temperature and humidity control.
- **Safe & Clean:** No flame, no chimney, no odors.
- **Flexibility:** One system can heat, cool and provide hot water.
- **Attractive:** No noisy, unsightly outdoor equipment.
- **Environment:** Helps reduce pollution.

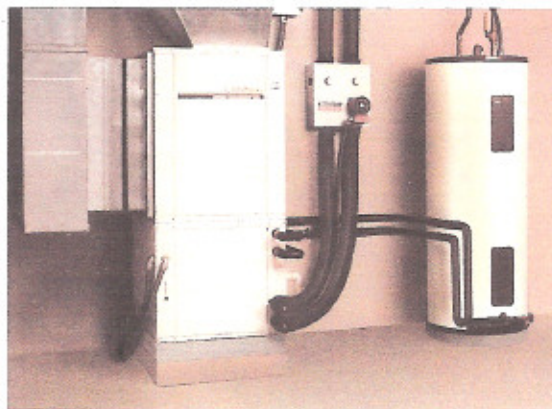
PREMIER AT: Advanced Technology, Unmatched Performance

Now, with the introduction of the PREMIER AT Series™, WaterFurnace takes geothermal technology, in a quantum leap, to a whole new level of performance.

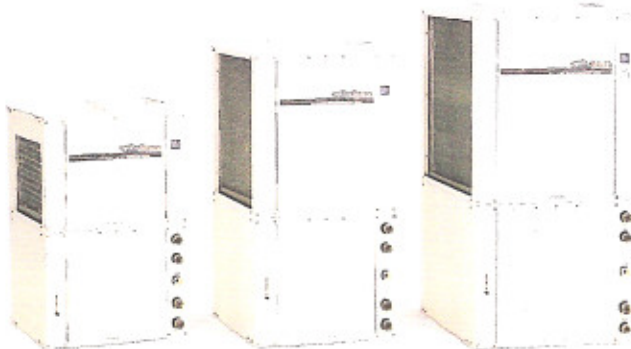
The WaterFurnace team that developed this unit had a bold mission: incorporate the most advanced components, include all the features homeowners want, and achieve the highest energy efficiency possible.

The PREMIER AT. It's unquestionably the best geothermal system money can buy. Here's why:

- **Lowest Operating Cost:** Independent laboratory tests prove PREMIER AT is the most efficient geothermal unit available. This can mean up to 30% heating and cooling savings compared to other geothermal models.
- **Most Comfortable:** Precise distribution of warmer air in winter and better dehumidification in summer.
- **Quietest Operation:** Super-efficient compressor and soft-start fan make the PREMIER AT almost silent.



- **Accurate Temperature Control:** Electronic thermostat is easy to use and maintains precise temperature.
- **Most Reliable:** Microprocessor controls state-of-the-art components for smooth operation and longer life.
- **Choice of sizes:** Eleven different sizes to meet any residential application.
- **Worry-Free® Warranties:** Better standard and extended equipment & loop warranties than any competitor.



PREMIER AT Series: The Inside Story

By design, this revolutionary system looks clean, simple and compact on the outside. But inside, it's a remarkable combination of high technology components and ingenious engineering. Check the features of the PREMIER AT against any other geothermal unit, and it's easy to see why it outperforms all others.

• Rugged steel cabinet painted with durable epoxy for long-lasting beauty and service.

• Soft starting, variable speed fan motor* provides extra quiet operation and more comfortable air temperatures.

• Insulated components to protect against condensation at low temperature operation.

• Advanced design scroll and rotary compressors are used for maximum efficiency and performance.

• Highly visible exterior fault and status lights to indicate system problems and facilitate troubleshooting.

• Microprocessor control board sequences components for quiet start up and maximum efficiency, selects fan speed for optimum comfort, and monitors safety controls to prevent component damage.

• Optional internal auxiliary heat for safe, clean and low cost installation, with electronic control.

• Easy-access filter rack for fast, convenient filter cleaning or replacement.

• Large, enhanced air coil adds to unit efficiency.

Even the simple-to-use electronic thermostat incorporates advanced technology to provide additional comfort and efficiency. Here are some of its features:

- Selectable in F or C
- Maintains precise temperature
- Auto or manual changeover
- Digital LCD display
- Remote sensing capability
- Continuous fan selection
- Status lights

• Drain pan overflow protection.

• Optional factory-installed water heating system, with staged control and scald protection, allows you to save even more on hot water.

*Not available on ATV 010-013.

WaterFurnace
PREMIER AT SERIES™

T A K E C O M F O R T I N A B E T T E R E N V I R O N M E N T

Leadership Through Quality... Quality Through Commitment

WaterFurnace International, Inc. is dedicated to quality. The commitment to deliver the best products pervades all departments.

Developing the new PREMIER AT™ required extensive market research, involving hundreds of customer and Dealer surveys. Then, prototype units were subjected to over 4,000 hours of laboratory testing. Finally, PREMIER AT units were installed in numerous American and Canadian homes for field testing.

You can even take a "test drive" before you buy. Our computer energy analysis lets you see the actual performance of a WaterFurnace unit compared with other types of systems. It even estimates annual utility savings.

Your Authorized WaterFurnace Dealer is the secret of our success and the key to your total satisfaction. Each Dealer is a professional who is familiar with your climate conditions and local energy costs.

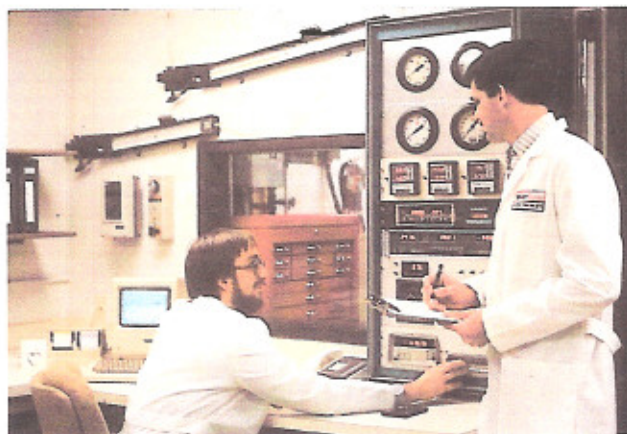
Your factory-trained Authorized WaterFurnace Dealer can handle any heating and cooling need: selecting the right unit...performing an energy analysis...installing your geothermal system...or providing service as required.

WaterFurnace warranties are the best in the industry. Our standard equipment warranty is five years on **all parts**, plus a repair and replacement **labor allowance** on all warranted parts.

Authorized Dealers can offer you a **Worry-Free® 10-Year Extended Equipment Warranty**. Authorized Geothermal Services Contractors (loop installers) can offer you a unique **Worry-Free® 55-Year No-Leak Loop Warranty**. Ask your Dealer for details.

ARI 330 - Closed Loop Ground Source Applications

UNIT SIZE	CFM	GPM	COOLING 77°F EWT		HEATING 32°F EWT	
			BTU/HR	EER	BTU/HR	COP
ATV010	350	2.5	10,800	15.9	7,900	3.5
ATV013	400	3.5	13,900	15.7	9,900	3.3
ATV016	500	4.0	17,100	16.0	12,000	3.5
ATV019	600	5.0	19,700	16.8	13,700	3.6
ATV022	700	6.0	23,400	16.8	15,700	3.4
ATV028	900	7.0	28,200	16.0	20,800	3.6
ATV034	1100	9.0	33,600	14.4	25,000	3.3
ATV040	1300	11.0	41,500	15.2	29,500	3.4
ATV046	1500	12.0	48,500	14.9	35,000	3.4



Each PREMIER AT unit carries our exclusive **Quality Assurance** emblem, personally signed by the final assembly and quality-test technicians.

Quality Assurance

From The Leader
In Geothermal
Heating/Cooling
Systems

WaterFurnace

UNIT BUILT BY
Nick Krieger
TESTED BY



ARI 325 - Open Loop Ground Water Applications

UNIT SIZE	CFM	GPM	COOLING				HEATING			
			70°F EWT		50°F EWT		70°F EWT		50°F EWT	
			BTU/HR	EER	BTU/HR	EER	BTU/HR	COP	BTU/HR	COP
ATV010	350	1.5	10,900	14.9	11,700	19.1	11,800	4.5	9,500	3.7
ATV013	400	1.5	14,000	14.9	14,900	18.3	14,700	4.4	11,800	3.7
ATV016	500	2.0	17,300	15.4	18,900	19.9	17,900	4.6	14,500	3.9
ATV019	600	3.0	20,200	15.8	22,200	20.0	20,800	4.4	16,700	3.8
ATV022	700	3.0	23,600	15.8	24,800	19.0	23,800	4.6	19,100	3.9
ATV028	900	4.0	28,800	15.3	31,000	18.0	31,400	4.5	25,000	3.8
ATV034	1100	5.0	33,800	13.7	36,800	16.8	38,000	4.3	30,600	3.7
ATV040	1300	5.0	42,000	14.4	45,000	17.4	44,500	4.4	35,500	3.9
ATV046	1500	6.0	49,000	14.4	52,500	17.2	51,000	4.4	41,500	3.8

Rated in accordance with ARI Standards 325 and 330 which include power consumption allowance for water pumping.

Cooling capacities based on 80°F DB, 67°F WB entering air temperature.

Heating capacities based on 70°F DB entering air temperature.

These ratings are in accordance with CSA Standard C446 (1990).

WaterFurnace
PREMIER AT SERIES™

In U.S.A. - WATERFURNACE INTERNATIONAL, INC.
9000 Conservation Way, Fort Wayne, IN 46809
(219) 478-5667

In Canada - WATERFURNACE INC.
234 Talbot Street West, Learnington, Ontario N8H 1P1 Canada
(519) 326-5728

TAKE COMFORT IN A BETTER ENVIRONMENT