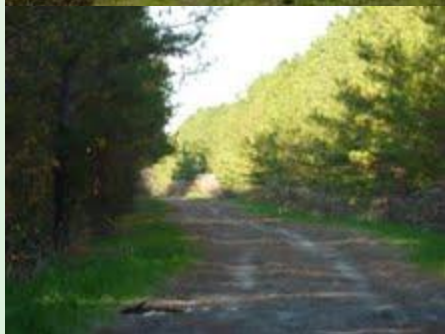




Fleming Properties, Inc.

A Real Estate Investment Company



Property Type: Recreational

Name: Harvey Quarter Tract

County: Pasquotank and Gates

Availability: Immediate

Acres: 1538 +/-

Address: 807 Hwy 158

City: Elizabeth City

State: NC

Description:

This incredible spread of land, which is located in both Gates and Pasquotank counties, offers 1500+ acres of timber and recreational land within miles of the Great Dismal Swamp. The property contains hundreds of acres of timber and an almost perfect habitat for wildlife. On its northern and western sides are additional acres of woodlands, and cropland borders on its eastern and southern sides. This land presents a unique opportunity for future timber value/sales and provides recreational, hunting, and wildlife value. The tract supplies a perfect and welcoming environment for a diverse range of wildlife including deer, bear, turkey, and duck. Additional appeal includes road frontage value along Hwy 158. Seller is motivated and willing to entertain any and all offers. Please contact Robin Fleming at 919-215-5621 for additional information.

Purchase Price: \$1,150,000

Contact Person: Robin Fleming

Staying the Course

Fleming Properties, Inc.
flemingpropinc.com

Raleigh Office
6304 Castlebrook Drive
Raleigh, NC 27604
919-876-3331
Robin Fleming
rfleming@flemingpropinc.com
919-215-5621