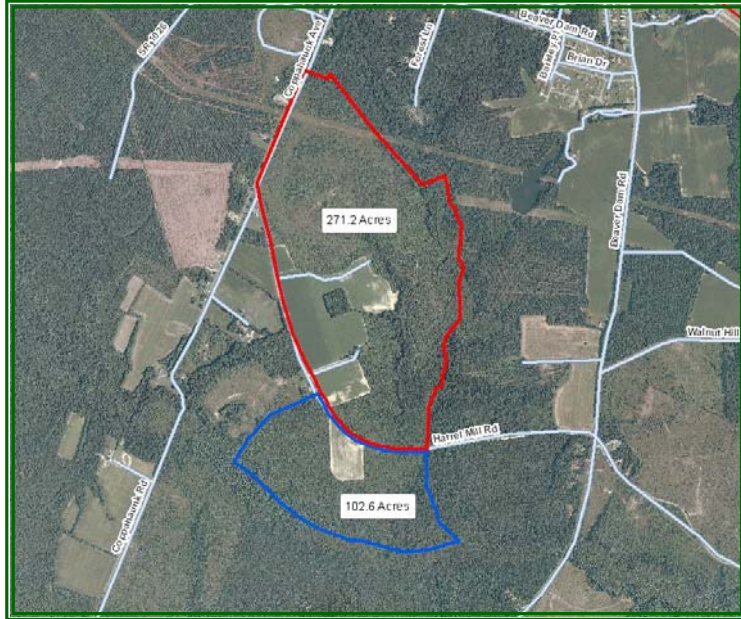


373.8 ACRES FOR SALE IN SUSSEX COUNTY, VIRGINIA

PRICE— \$695,000
WILL SELL AS SEPARATE TRACTS



102.6+/- ACRES— \$190,800
271.2+/- ACRES— \$504,200



PROPERTY INFORMATION:

- *Approximately 1,930' Of Road Frontage On Coppahaunk Ave. South Of Waverly, VA.
- *Long Frontage On Both Sides Of Harrell Mill Road
- *There Is A Farm House Built Prior To The Civil War On The 271.2 Acre Tract Containing Approximately 1,346 Sq. Ft. Of Living Area
- Approximately 62 Acres Of The Property Is Open Land

FOR 24 HOUR RECORDED INFORMATION CALL LANDLINE

102.6 Acres: 1-888-471-LAND # **2156** & 271.2 Acres: 1-888-471-LAND # **2157**

OR VISIT OUR WEBSITE

WWW.GRANTMASSIE.COM

REPRESENTED BY:

BILL GRANT

ALC, VLS

804-754-3476

WGrant@GrantMassie.com

JEFFREY HUFF

ALC, FORESTER

804-750-1207

JHuff@GrantMassie.com



GRANT MASSIE
LAND COMPANY

ACCREDITED LAND CONSULTANTS ♦ COMMERCIAL REAL ESTATE SERVICES
REALTORS®

EXPERTISE—CONSULTATION—RESULTS

1403 PEMBERTON ROAD, SUITE 106; RICHMOND, VIRGINIA 23238

804-750-1200—TOLL FREE: 1-800-665-LAND—FAX: 804-754-3485

All information deemed reliable, but not guaranteed.