

FOR SALE

40 ACRES PRIME DEVELOPMENT PROPERTY

ELLIS COUNTY - HAYS, KANSAS

LEGAL DESCRIPTION: S/2S/2NW/4 of 28-14-18

LOCATION: From intersection of 183 By-Pass/Main St in Hays go 3.7 miles south on Blacktop CR 240 Avenue to the NW corner.

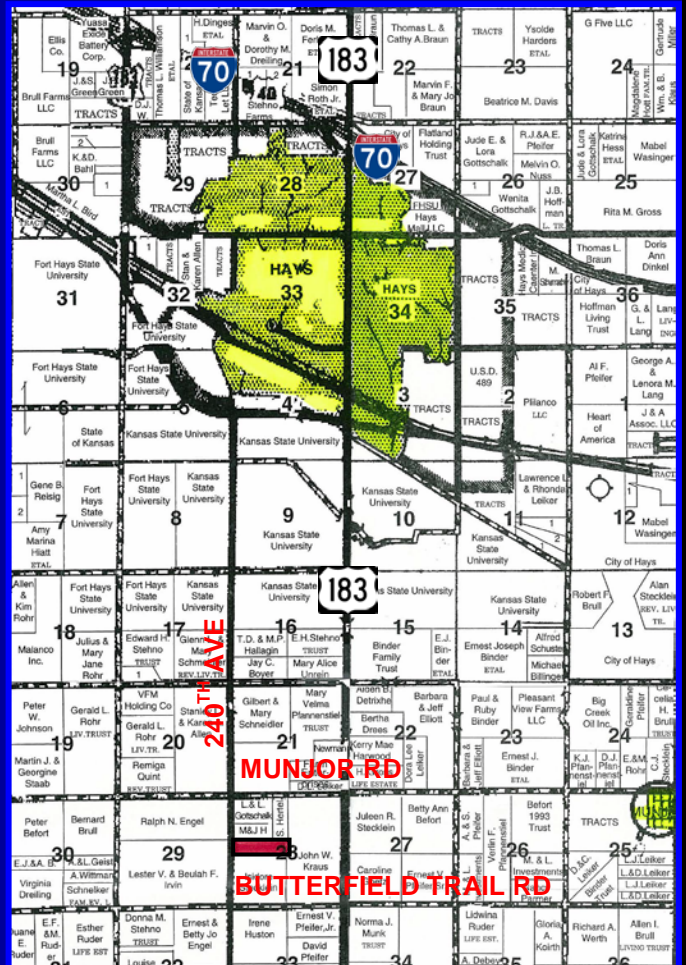
MINERAL RIGHTS: All of the Seller's interest will transfer

POSSESSION: Date of closing.

REAL ESTATE TAXES: Seller to pay taxes for all 2010 and prior years Taxes for 2011 will be the responsibility of the Buyer. (2009 Taxes - \$91 est)

PRICE: \$140,000

For a Virtual Tour visit
www.farmandranchrealty.com



FARM & RANCH REALTY, INC.

Scotty Legere, Listing Agent
 (785-650-9970)
 1420 W. 4TH • COLBY, KS
 Toll Free - 800-247-7863

Donald L. Hazlett – Broker

"When you list with Farm & Ranch, it's as good as SOLD!!"

